

Automation and Control Solutions for HVAC

OEMs, Distributors, BAS, Contractors

ASI

Your Source for Automation Components



Same Certifications
Reduced Costs
Better Availability

Call Toll-Free
877-650-5160

Live Support Online
www.SourceASI.com

Automation and Control Solutions for HVAC

ASI has **Automation and Control Solutions** for any HVAC application:

- Disconnect Switches for Safely Disconnecting Power from Equipment
- Emergency Stop Buttons for Stopping Machine Operation
- Contactors & Relays for Motor, Heater and Life Safety applications
- Push Button Control Stations for All Types of Equipment Commands
- Rotary Cam Switches for Controlling Multiple Functions
- DIN Rail Assemblies with Terminal Blocks and Components for OEM Applications
- Terminal Block Relays for Control Circuits
- DIN Rail Power Supplies for Building Automation Systems (BAS) Panels and Components
- Ethernet Connectivity & Switches for Industrial Ethernet Circuits
- Terminal Blocks, Circuit Breakers, AC Outlets, Fuse Holders
- Panel Components for BAS and Motor Control Panels



Why **ASI**?

ASI has a proven track record of supplying high quality competitive products for over **20 years** to over **12,000 companies** throughout North America. You can count on **ASI** to be there with:

- Availability** **ASI** meets customer promise dates over **95%** on-time.
- Quality** **ASI** products are comprised of features, materials and specifications that are equal to the best on the market, but at significant savings.
- Selection** **ASI** offers over **15,000** products on our comprehensive **B2B** website with thousands more available upon request. We offer hundreds of **NEW** products each year.
- Approvals** **ASI** products are used internationally and boast approvals and are compliant with UL, CSA, ATEX, VDE, KEMA, ETL, CCC, RoHS, CE and REACH to name a few.
- Savings** Our customers tell the story, on average, feedback confirms that **ASI** will save you at minimum **20-50%** when compared to similar products.



Rotary Disconnect Switches

UL 508 & UL 98 Disconnect Switches for door mounting, panel mounting and DIN rail mounting in both non-fused and fused models from 16A to 160A, up to 600 vac, suitable as a motor disconnect. Handles available in Lockout/Tagout and Non-Lockable styles.



Enclosed Disconnect Switches, Motor Rated

UL 508 & UL 98 Disconnect Switches both non-fused and fused models from 16A to 160A, up to 600 vac, suitable as a motor disconnect. Weather-proof Enclosures with Lockout/Tagout Handles

Circuit Breakers: MCCB, DIN Rail UL489 and UL1077

- UL listed Molded Case Circuit Breakers (MCCB) for main power entry
- DIN rail mount UL489 & UL1077 1,2,3, and 4 Pole up to 125 amp
- GFCI Type Circuit Breakers
- Lockout/Tagout Handles for MCCBs
- All Accessories available

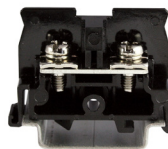


DIN Rail Mount Terminal Blocks

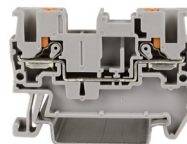
ASI has the broadest range of DIN Rail Terminal Blocks - single level feed through, double level, triple level, fuse holder terminal blocks and other special function terminal blocks. Aluminum and Steel DIN Rail and all related accessories.



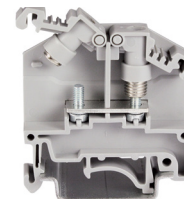
Screw Clamp



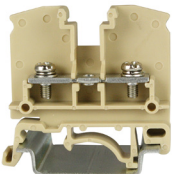
NEMA Style



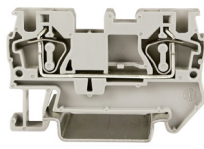
Push-In Wire



Bolt Connection



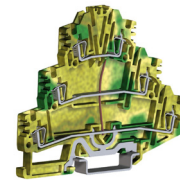
Ring-Spade Lug



Spring Clamp



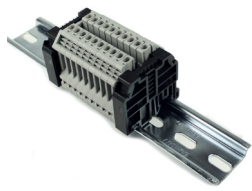
Double=Level



3 Level Grounding

DIN Rail Assemblies with Terminal Blocks, Relays and Components

- DIN Rail Assemblies built to your drawing and specifications
- Significant Cost and Labor savings for OEMs
- Reduced Inventory and system SKUs



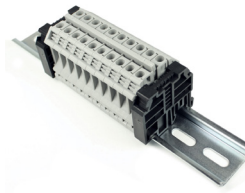
RAAK3N21-10



RAAK5N21-10



RAAK6N21-10



RAAK6NJ21-10



RAAK10N21-10

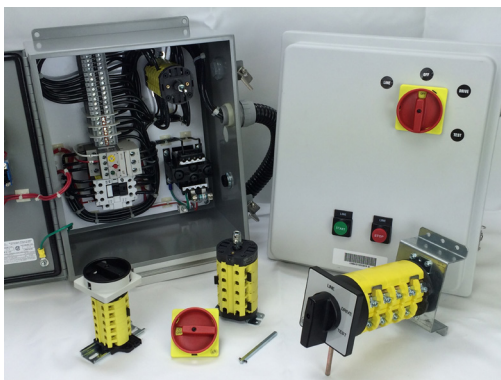
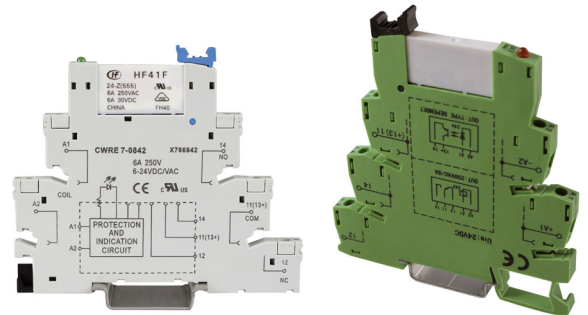
Contactors & Relays

- Contactors & Relays for Motor Control applications
- Contactors & Relays for Fire/Life Safety Shutdown/Indication
- Contactors & Relays for Heater Control applications
- 6 thru 800 amps
- DIN and Screw mountable
- Overload Relays and Manual Motor Starters available



DIN Rail Mounted Relay Terminal Blocks

ASI has over 50 models of **Relay Terminal Blocks** including equivalents to Allen Bradley®, and Phoenix Contact®, low profile, spring clamp connection, and solid state.



VFD Bypass Cam Switches

- 4 Position "LINE-OFF-BYPASS-TEST" Cam Switch set up for Manual VFD Bypass
- Auxiliary Contacts for Indication/Status
- Lockable and Non-Locking Handle Assemblies
- 20, 40, 63 and 80 amp Ratings up to 600 vac 3 Phase

Variable Frequency Drives (VFD)

- Variable Torque for all HVAC and Pump applications
- Standard Communication Protocols
- 1 & 3 Phase Input
- Up to 480 vac rated





DIN Rail Mounted Fuse Holders, Midget & Class CC

The Midget Fuse Holders and Class CC Fuse Holders from ASI are available in a 1, 2, and 3 pole with or without blown fuse indication. Accepts 10x38mm fuses.

Selector & Push Button Switches

The ASI series of Selectors and Push Button Switches includes a wide range of colors, flush and extended models, mushroom head, illuminated, multi-function, multi-position, key switch and pre-printed models. Ratings include IP67, 69K, equivalent NEMA 4, 4X



22mm LED Panel Indicators/Pilot Lights

ASI's 22mm LED Panel Indicators feature an easy to install uni-body design, quick wire terminals and voltage ranges from 12 to 220 Vac/dc in 5 colors. Long lasting a



Push Button Control Stations

ASI Push Button Control Stations are available for start-stop, on-off, forward-reverse, with indicator lights, selector switches, any color push button, key switches and more. Custom versions available.

Emergency Stop Button with Enclosure, NEMA 4, 4X

ASI E-Stop Control Stations are available in a wide range of options including push-pull, twist release, key release, with guard or protective cover, printed or with an e stop label, with cable glands, and more. Custom configurations are available upon request.



Emergency Stop Buttons

ASI E-Stop Buttons are UL508 Listed, EN ISO 13850 compliant for emergency stopping and are available in push-pull, twist to release or key release in a wide range of sizes. With IP66, IP67, and IP69K, NEMA 4, 4X ratings and NO or NC contacts that fit all applications.



Rotary Cam Switches—Rear Panel, Base or DIN Rail Mounted

Select from a huge range of Cam Switches including On-Off, Changeover, Motor Reversing, Multi-Step, Ammeter, Voltmeter and Custom Configurations to meet your application. 12A to 200A, 1 to 6 poles all UL508 Listed and with a wide range of handles and knobs.

Limit Switches, Roller-Lever-Plunger-Whisker-Wobble

- Adjustable Roller Lever, Whisker, Rod and Off-Set Types
- For Positive Damper Indication
- For Access Cover/Door interlock status
- UL Listed, IEC, CE Approved



Transformers

- Industrial Control Transformers
- All Primary and Secondary Voltages available

DIN Rail Mount Power Supplies

Over 100 models of Power Supplies ranging from .5A to 100A, 15W to 2400W, with voltages of 5, 12, 15, 24, 48, 72, and 150 Vdc. Also DC to DC converters, battery chargers and DC UPS systems are part of our “Power-Full” product offering.



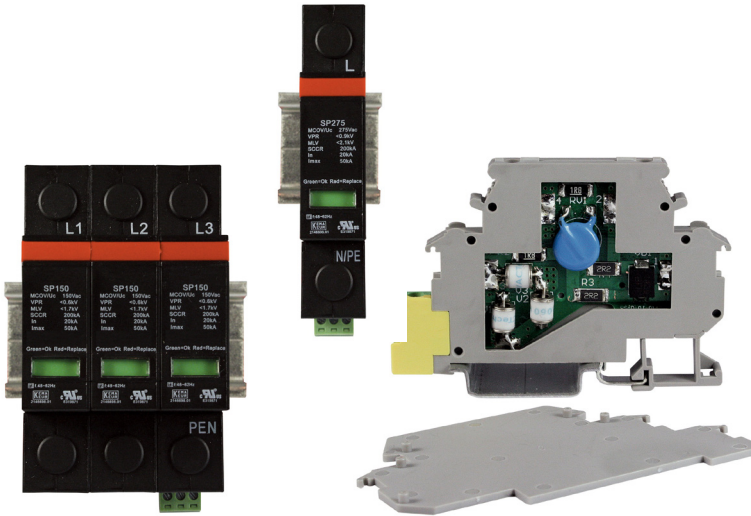
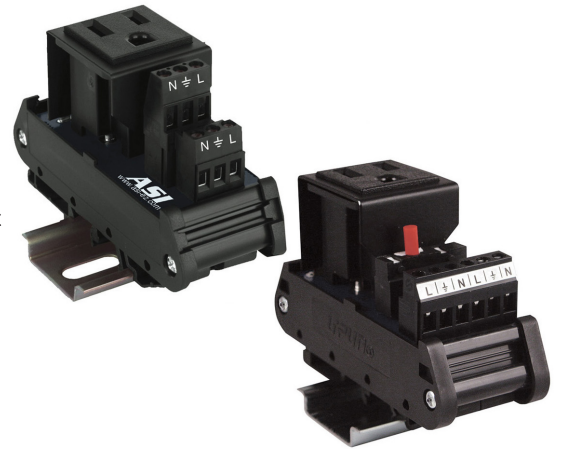


DIN Rail DC UPS & Power Supply DC UPS Combo

ASI offers a full range of DC UPS Systems, Battery Chargers, DIN Rail Battery Holders and Power Supplies with an integrated power supply. Choose from basic models to full featured microprocessor controlled, user programmable models.

AC Outlets, DIN Rail-Panel Mount, GFCI, USB Charger

GFCI, USB Charger ASI offers the most complete range of AC Outlets for industrial applications including single and dual receptacles, circuit breaker protected, GFCI, Outlet with integrated USB charger, enclosed direct panel mount, through panel, IEC320 and International. 120 vac.



Surge Protection Devices

- DIN rail Mountable
- LED Indicators
- 1,2,3,4 pole versions
- For Control and Power Circuits
- UL Listed

Super Compact Industrial Ethernet Switches

The 5 and 8 Port Ruggedized Industrial Ethernet Unmanaged Switches are the most compact space saving IE unmanaged switches on the market. UL508 Listed, Class 1, Div 2 rating.



Ethernet Panel Mount Adapters, M12 to RJ45

M12 to RJ45 Thru Panel M12 to RJ45 Adapters with D-Coded or X-Coded connectors for use with Cat5e, Cat6A, and Cat7 cable

Industrial Ethernet Patch Cables, M12 to RJ45 Connectors

These Industrial Ethernet Cables feature SFTP Cat5e or Cat6A shielded cable with a black PUR jacket and 24 AWG wire. Standard lengths of 1, 3, and 5 meters with either D-Coded or X-Coded M12 male connectors.

ASI offers Custom Length IE Patchcords (M5, M8, M12), many other Cord Set Types and Single Ended Cables.



Waterproof Ethernet Cable Connector

Ideal for use with the ASICPICRJ45S to ensure a complete waterproof connection when the cable is attached to the Through Panel Waterproof RJ45 Connector.



Waterproof Through Panel Connectors, RJ45 USB

RJ45 USB Industrial Ethernet RJ45 and USB 3.0 through panel connectors that are waterproof, weatherproof and carry a NEMA 4, 4X and 6 rating. Choose front or rear panel mounting, with cap or optional cap, black or nickel bezel and cable mounted connectors.



Your Source for Automation Components

Same Certifications, Reduced Costs, Better Availability
That's the ASI way.

4700 Westport Drive, Suite 500
PO Box 1340 • Mechanicsburg, PA 17055
877-650-5160 • 717-249-5581
www.SourceASI.com



View All ASI Products!