

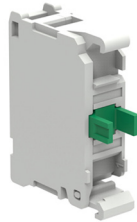
**SKU:LPXC10A**

Disconnect Switch  
Auxiliary CONTACT 1NO  
EARLY MAKE



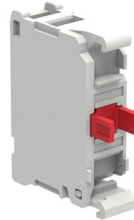
**SKU: LPXC01**

Contact Block Normally  
Closed NC 22mm Screw  
Termination DIN Rail  
Mount



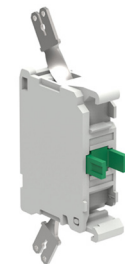
**SKU: LPXC10**

Contact Block Normally  
Open NO 22mm Screw  
Terminations DIN Rail  
Mount



**SKU: LPXC01D**

Disconnect Switch  
Auxiliary CONTACT 1NC  
LATE BREAK



**SKU: LPXCF10**

ADD-ON Discon-  
nect Switch Auxiliary  
CONTACT 1NO WITH  
FASTON Terminal



**SKU: LPXCF01**

ADD-ON Discon-  
nect Switch Auxiliary  
CONTACT 1NO WITH  
FASTON TERMINI



**SKU: LPXCB10**

Normally Open Contact  
Element for LPZ Control  
Stations



**SKU: LPXCB01**

Normally Closed Con-  
tact Element for LPZ  
Control Stations



**SKU: LPCD06**

Waterproof Industrial  
RJ45 Connector, Cat 6,  
Rear Mount, IP65, NEMA  
4X



**SKU: LPCD01**

USB Waterproof con-  
nector with cap, 3.0, A-A  
22 mm Bulkhead



**SKU: LPL7**

Clear Indicator LED  
Light Head for 22mm  
LED Indicator, UL Listed



**SKU: LPL1187**

Clear Indicator LED  
Light Head voltage  
symbol for 22mm LED  
Indicator



**SKU: LPCBL7112**

Illuminated Start Stop Pushbutton Switch-Momentary-22mm



**SKU: LPCBL7212**

Illuminated ON OFF Switch-Momentary-22mm-Flush-Black-Extended-Red



**SKU: LPCB7112**

Start Stop Push Button, Momentary, Black/Red, Flush, 22mm



**SKU: LPCB7212**

Start Stop Push Button, Flush Black, Extended Red, Silver Bezel, 22mm



**SKU: LPCBL7122**

Illuminated ON OFF Switch-Momentary-I/O-Symbols-22mm-Flush-Black-Red



**SKU: LPCBL7222**

Illuminated ON OFF Switch-Momentary-22mm-Flush-Black-Red-I/O-Symbols



**SKU: LPCB7122**

On Off Push Button with I/O Symbols, Momentary, Black/Red, Flush, 22mm



**SKU: LPCB7222**

On Off Push Button, I/O Symbols, Black Flush/Red Extended, 22mm



**SKU: LPSB6744**

Panel Mount 240V Alarm Buzzer, IP67, IP69K, NEMA 4X Rated, 22mm 240V Audible Alarm Buzzer With 90dB Sound Intensity



**SKU: LPCZSBIP**

Panel Mount 24V Alarm Buzzer, IP67, IP69K, NEMA 4X Rated, 22mm 24V Audible Alarm Buzzer With 90dB Sound Intensity



**SKU: LPCZSAIP**

Panel Mount 12V Alarm Buzzer, IP67, IP69K, NEMA 4X Rated, 22mm 12V Audible Alarm Buzzer With 90dB Sound Intensity



**SKU: LPCZSA**

Panel Mount 12V Alarm Buzzer, 22mm 12V Audible Alarm Buzzer With 90dB Sound Intensity

**SKU: LPMLA7**



12v LED Panel Light, White, 22mm, UL

**SKU: LPMLE7**



110v LED Indicator Light, White, 22mm, UL

**SKU: LPMLM7**



230v LED Indicator Light, White, 22mm, UL, LPMLM7

**SKU: LPMLD7**



12v LED Panel Light, Red, 22mm, UL

**SKU: LPCB308**



Guarded Push Button with Momentary Return, White, 22mm

**SKU: LPMLB7**



24 Volt LED Panel Indicator Light, White, 22mm, UL

**SKU: LPCQ108**



Push On-Push Off Button Switch, Flush, Blue, 22mm

**SKU: LPXB108**



Flush Cap for Spring-return Actuators, White

**SKU: LPCB108**



22mm Plastic Push Button, Momentary, White, Flush

**SKU: LPXB208**



Extended Cap for Spring-return Actuators, White

**SKU: LPCB208**



Plastic Push Button, Momentary, Extended, White, 22mm

**SKU: LPCQ208**



Push On-Push Off Button Switch, Extended, Blue, 22mm



**SKU: LPCB1118**

22mm Momentary ON Push Button, White, Flush, Plastic, Symbol I.



**SKU: LPCB1128**

22mm Momentary PAUSE Push Button, White, Flush, Symbol II.



**SKU: LPCB1196**

Momentary Push Button with RESET indication, R Symbol, Blue, Flush



**SKU: LPCB6742**

Latched Pull to Release 40mm Plastic Black Mushroom Push Button Switch



**SKU: LPCB1148**

22mm White Momentary Push Button LEFT or RIGHT Indication Arrow, Flush



**SKU: LPCB6342**

Latched Turn to Release 40mm Plastic Black Mushroom Push Button Switch



**SKU: LPCB1158**

22mm Momentary Push Button UP or DOWN Indication Arrow, White, Flush



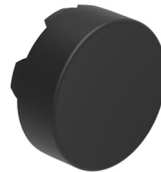
**SKU: LPCB6142**

Mushroom Push Button Switch, 40mm Head, Momentary Return Black



**SKU: LPCB1168**

Momentary START Push Button Switch, Flush Housing, 22mm Plastic



**SKU: LPXB202**

Extended Cap for Spring-return Actuators, Black



**SKU: LPCB1178**

Momentary Push Button with RESET indication, R Symbol, White, Flush



**SKU: LPCB6162**

Black Plastic Mushroom Push Button, Momentary, 60mm Head, 22mm Base





**SKU: LPCBL7124**

Illuminated ON OFF  
Switch-Momentary-I/O-  
Symbols-22mm-Flush-  
White-Black



**SKU: LPCBL7224**

Illuminated ON OFF  
Switch-Momentary-  
22mm-Flush-White-  
Black-I/O Symbols



**SKU: LPCB7124**

On Off Push Button, I/O  
Symbols, Momentary,  
White/Black, Flush,  
22mm



**SKU: LPCB7224**

On Off Push Button, I/O  
Symbols, White Flush/  
Black Extended, 22mm



**SKU: LPCB7114**

Start Stop Push Button,  
Momentary, White/  
Black, Flush, 22mm



**SKU: LPCB7214**

Start Stop Push But-  
ton White Flush/Black  
Extended, Silver Bezel,  
22mm



**SKU: LPCBL7114**

Illuminated Start Stop  
Switch-Momentary-  
22mm-Flush-White-  
Black



**SKU: LPCBL7214**

Illuminated ON OFF  
Switch-Momentary-  
22mm-Flush-White-Ex-  
tended-Black

**SKU: LPCPA050**



50,000 Ohm Potentiometer with graduated Scale, NEMA 4X

**SKU: LPCPA002**



22mm Potentiometer with Graduated Scale 2.5kOhm, IP69K, NEMA 4X

**SKU: LPCPA001**



1k Ohms Potentiometer, 22mm Mounting, Silver Bezel

**SKU: LPCS320**



Key Selector Switch, 2 Position, Maintained, 22mm Plastic, Water-proof

**SKU: LPCPA005**



5k Ohm Potentiometer with Graduated Scale, 22mm Mounting, Silver Bezel, NEMA 4X

**SKU: LPCS321**



2 Position Key Selector Switch, Maintained, 22mm Plastic, Water-proof

**SKU: LPCPA100**



Momentary Push Button with RESET indication, R Symbol, Blue, Flush

**SKU: LPCS340**



Key Selector Switch, 2 Position, 22mm Plastic, Maintained to Left

**SKU: LPCPA500**



22mm Potentiometer, IP69K, NEMA 4x, 500,000 Ohms Resistance

**SKU: LPCS350**



Key Selector Switch, 3 Position, 22mm, Center and Right Maintained

**SKU: LPCPA010**



10K Ohms Resistance Potentiometer, 22mm Mount, NEMA 4X

**SKU: LPCS370**



Key Selector Switch, 3 Position, 22mm, Center Maintained

**SKU: LPCS380**



Key Selector Switch, 3 Position, 22mm, Center and Right Maintained

**SKU: LPCB6842**



Latched Turn Key to Release 40mm Black Mushroom Push Button Switch

**SKU: LPCS390**



Key Selector Switch, 3 Position, 22mm, Center and Left Maintained

**SKU: LPCBL6148**



White Illuminated 40mm Mushroom Push Button, Momentary, 22mm

**SKU: LPCQL207**



Illuminated Push On Push Off Button Switch, Extended, CLEAR, 22mm

**SKU: LPCBL207**



Illuminated Momentary Push Button Switch, Transparent, Extended, 22mm

**SKU: LPCQL107**



Illuminated Push On Push Off Button Switch, Flush, CLEAR, 22mm

**SKU: LPCBL107**



Illuminated Momentary Push Button Switch, Transparent, Flush, 22mm

**SKU: LPCR1002**

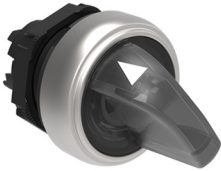


Momentary Reset Push Button, Flush, Black, 0-150mm Shaft

**SKU: LPCB302**



Guarded Push Button with Momentary Return, Black, 22mm



**SKU: LPCSL1208**

Illuminated 2 Position Selector Switch, White, Maintained, 22mm



**SKU: LPCS120**

2 Position Switch, Maintained, 22mm, Plastic Bezel, Waterproof



**SKU: LPCSL1218**

Illuminated 2 Position Selector Switch, White, Maintained-Momentary



**SKU: LPCS121**

2 Position Switch, Momentary, 22mm, Plastic Bezel, Waterproof



**SKU: LPCSL1308**

Illuminated 3 Position Selector Switch, White, Maintained



**SKU: LPCS130**

3 Position Selector Switch, Maintained, 22mm, Plastic, Waterproof



**SKU: LPCSL1318**

White Illuminated Selector Switch, 3 Position, Center Maintained



**SKU: LPCS133**

3 Position Selector, Maintained at Left and Center, 22mm Plastic



**SKU: LPCSL1328**

White Illuminated Selector Switch, 3 Position, Center-Right Maintained



**SKU: LPCSL1338**

White Illuminated Selector Switch, 3 Position, Center Maintained



**SKU: LPCB1502**

22mm Black, Momentary Push Button OPEN Indication, Flush Housing



**SKU: LPCB1142**

22mm Black Momentary Push Button RIGHT or LEFT Indication Arrow, Flush



**SKU: LPCB1512**

22mm Black Momentary Push Button CLOSE Indication Arrows, Flush



**SKU: LPCB1152**

22mm Momentary Push Button UP or DOWN Indication Arrow, Black, Flush



**SKU: LPCB2102**

22mm Extended Black Push Button OFF Switch Symbol O, Momentary, Flush



**SKU: LPCB1102**

Black Momentary Push Button with "O" Symbol, Flush, 22mm



**SKU: LPCB2132**

22mm Extended Black Push Button STOP Switch, Momentary, Flush



**SKU: LPCB1132**

22mm Momentary STOP Push Button, Black, Flush, Plastic, Symbol STOP



**SKU: LPCB102**

22mm Plastic Push Button, Momentary, Black, Flush



**SKU: LPCB202**

Plastic Push Button, Momentary, Extended, Black, 22mm



**SKU: LPCQ102**

Push On-Push Off Button Switch, Flush, Black, 22mm



**SKU: LPXB102**

Flush Cap for Spring-return Actuators, Black

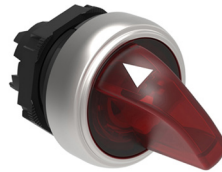


**SKU: LPMLA4**



12v LED Panel Light, Red, 22mm, UL

**SKU: LPCSL1204**



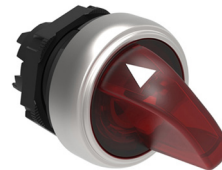
Illuminated Selector Switch, 2 Position, Red, Maintained, 22mm

**SKU: LPMLB4**



24 volt LED Indicator Lights, Red, 22mm, UL

**SKU: LPCSL1214**



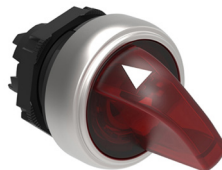
Illuminated 2 Position Selector Switch, Red, Maintained-Momentary

**SKU: LPMLD4**



48v LED Indicator Light, Red, 22mm, UL

**SKU: LPCSL1314**



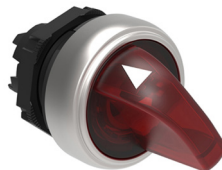
Illuminated 3 Position Selector Switch, Red, Center Maintained

**SKU: LPMLE4**



110v LED Indicator Light, Red, 22mm, UL

**SKU: LPCSL1324**



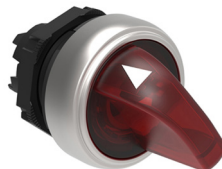
Red Illuminated Selector Switch, 3 Position, Center-Right Maintained

**SKU: LPMLM4**



230v LED Indicator Light, Red, 22mm, UL

**SKU: LPCSL1334**



Red Illuminated Selector Switch, 3 Position, Center Maintained

**SKU: LPL4**



Red Indicator LED Light Head for 22mm LED Indicator, UL Listed

**SKU: LPCSL1304**



Illuminated 3 Position Selector Switch, Red, Maintained

**SKU: LPCB6844**



Emergency Stop Button with Key, Latched Turn to Release, 40mm Head

**SKU: LPCB6634**



Mushroom head pushbutton actuator Ø22mm Platinum series chromed plastic, latch, turn to release, Ø30mm

**SKU: LPCB6744**



Emergency Stop Button, Latched/Maintained, Pull to Release, 40mm

**SKU: LPCBL6644**



Illuminated Estop Push Button, Latched Turn to Release, 40mm Head

**SKU: LPCB6644**



Stop Button, Latch/Maintained Turn to Release, 40mm Red Mushroom Head

**SKU: LPSB6744**



Mushroom head pushbutton actuator Ø22mm Platinum series metal, latch, pull to release, Ø40mm. For emergency stopping.

**SKU: LPCR2004**



Momentary Reset Push Button, Extended, Red, 0-150mm Shaft

**SKU: LPCB6344**



Red Mushroom Push Button, 40 mm, Normal Stopping, Turn to Release

**SKU: LPCR1004**



Momentary Reset Push Button, Flush, Red, 0-150mm Shaft



**SKU: LPCB2134**

22mm Extended Red Push Button STOP Switch, Momentary, Flush



**SKU: LPCB1134**

22mm Momentary STOP Push Button, Red, Flush, Plastic, Symbol STOP.



**SKU: LPCB2104**

22mm Extended Red Push Button OFF Switch Symbol O, Momentary, Flush



**SKU: LPCB1104**

22mm Momentary OFF Push Button, Red, Flush, Plastic, Symbol O.



**SKU: LPCBL6144**

Red Illuminated 40mm Mushroom Push Button, Momentary, 22mm



**SKU: LPCB6144**

Mushroom Push Button Switch, 40mm Head, Momentary Return Red



**SKU: LPCB104**

22mm Plastic Push Button, Momentary, Red, Flush



**SKU: LPCQ104**

Push On-Push Off Button Switch, Flush, Red, 22mm



**SKU: LPCB204**

Plastic Push Button, Momentary, Extended, Red, 22mm



**SKU: LPCQ204**

Push On-Push Off Button Switch, Extended, Red, 22mm



**SKU: LPCB6164**

Red Plastic Mushroom Push Button, Momentary, 60mm Head, 22mm Base



**SKU: LPCQL204**

Illuminated Push On Push Off Button Switch, Extended, RED, 22mm



**SKU: LPXBL204**

Extended Lens for Illuminated Spring-return Actuators, Red



**SKU: LPCBL204**

Illuminated Momentary Push Button Switch, Red, Extended, 22mm



**SKU: LPXB204**

Extended Cap for Spring-return Actuators, Red



**SKU: LPCBL104**

Illuminated Momentary Push Button Switch, Red, Flush, 22mm



**SKU: LPXBL104**

Flush Cap for Spring-return Actuators, Red



**SKU: LPCQL104**

Illuminated Push On Push Off Button Switch, Flush, RED, 22mm



**SKU: LPXB104**

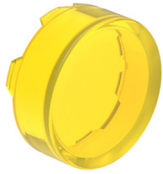
Red Lens for Illuminated Push Buttons, 22mm Lens



**SKU: LPCB304**

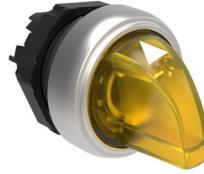
Guarded Push Button with Momentary Return, Red, 22mm

**SKU: LPXBL205**



Extended Lens for Illuminated Spring-return Actuators, Yellow

**SKU: LPCSL1205**



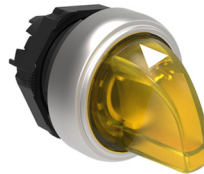
Illuminated Selector Switch, 2 Position, Yellow, Maintained, 22mm

**SKU: LPXBL105**



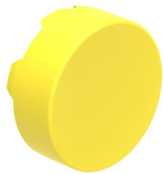
Flush Mounted Lens for Illuminated Spring-Return Push Buttons, Yellow, LPXBL105

**SKU: LPCSL1215**



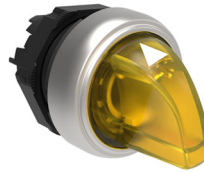
Illuminated 2 Position Selector Switch, Yellow, Maintained-Momentary

**SKU: LPXB205**



Extended Cap for Spring-return Actuators, Yellow

**SKU: LPCSL1325**



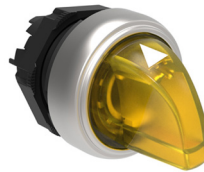
Yellow Illuminated Selector Switch, 3 Pos, Center-Right Maintained

**SKU: LPCBL6645**



Yellow Illuminated 40mm Mushroom Push Button, Latched, Normal Stopping

**SKU: LPCSL1305**



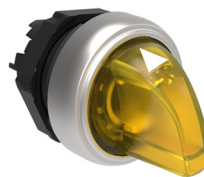
Illuminated 3 Position Selector Switch, Yellow, Maintained

**SKU: LPCB6165**



Yellow Plastic Mushroom Push Button, Momentary, 60mm Head, 22mm Base

**SKU: LPCSL1315**



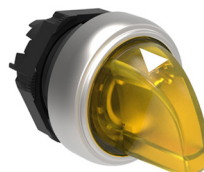
Illuminated 3 Position Selector Switch, Yellow, Center Maintained

**SKU: LPCB6145**



Mushroom Push Button Switch, 40mm Head, Momentary Return, Yellow

**SKU: LPCSL1335**



Yellow Illuminated Selector Switch, 3 Position, Center Maintained



**SKU: LPCB105**



22mm Plastic Push Button, Momentary, Flush, Yellow

**SKU: LPCQ105**



Push On-Push Off Button Switch, Flush, Yellow, 22mm

**SKU: LPMLA5**



12v LED Panel Light, Yellow, 22mm, UL

**SKU: LPCB205**



Plastic Push Button, Momentary, Extended, Yellow, 22mm

**SKU: LPMLB5**



24 volt LED Indicator Lights, Yellow, 22mm, UL

**SKU: LPCQ205**



Push On-Push Off Button Switch, Extended, Yellow, 22mm

**SKU: LPMLD5**



48v LED Indicator Light, Yellow, 22mm, UL

**SKU: LPCB305**



On Off Push Button, I/O Symbols, Green Flush/Red Extended, 22mm

**SKU: LPMLE5**



110v LED Indicator Light, Yellow, 22mm, UL

**SKU: LPXB105**



Flush Cap for Spring-return Actuators, Yellow

**SKU: LPMLM5**



230v LED Indicator Light, Yellow, 22mm, UL

**SKU: LPL5**



Yellow Indicator LED Light Head for 22mm LED Indicator, UL Listed

**SKU: LPCQL105**



Illuminated Push On Push Off Button Switch, Flush, YELLOW, 22mm

**SKU: LPCBL105**



Illuminated Momentary Push Button Switch, Yellow, Flush, 22mm

**SKU: LPCQL205**



Illuminated Push On Push Off Button Switch, Extended, YELLOW, 22mm

**SKU: LPCBL205**



Illuminated Momentary Push Button Switch, Yellow, Extended, 22mm

**SKU: LPCBL6145**



Illuminated Momentary Return Mushroom Push Button Switch 40mm Yellow



**SKU: LPCBL103**

Illuminated Momentary Push Button Switch, GREEN, Flush, 22mm



**SKU: LPCBL203**

Illuminated Momentary Push Button Switch, Green, Extended, 22mm



**SKU: LPCQL103**

Illuminated Push On Push Off Button Switch, Flush, GREEN, 22mm



**SKU: LPCQL203**

Illuminated Push On Push Off Button Switch, Extended, GREEN, 22mm



**SKU: LPCR1003**

Momentary Reset Push Button, Flush, Yellow, 0-150mm Shaft



**SKU: LPCB303**

Guarded Push Button with Momentary Return, YELLOW, 22mm



**SKU: LPCQ103**

Push On-Push Off Button Switch, Flush, Green, 22mm



**SKU: LPCB103**

22mm Plastic Push Button, Momentary, Green, Flush



**SKU: LPCQ203**

Push On-Push Off Button Switch, Extended, YELLOW, 22mm



**SKU: LPCB203**

Plastic Push Button, Momentary, Extended, GREEN, 22mm



**SKU: LPCBL6643**

GREEN Illuminated 40mm Mushroom Push Button, Latched, Normal Stopping



**SKU: LPCB6163**

Green Mushroom Head Push Button, Momentary, 60mm Head, 22mm Base



**SKU: LPCBL6143**

GREEN Illuminated Mushroom Head Push Button, Momentary



**SKU: LPCB6143**

Mushroom Push Button, Momentary Spring Return, GREEN, 40mm, 22mm base



**SKU: LPCB1113**

22mm Momentary ON Push Button, Green, Flush, Plastic, Symbol I.



**SKU: LPXB103**

Flush Cap for Spring-return Actuators, Green



**SKU: LPCB1123**

22mm Momentary PAUSE Push Button, Green, Flush, Symbol II.



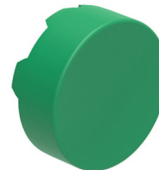
**SKU: LPXBL103**

Flush Lens for Illuminated Spring-return Actuators, Green



**SKU: LPCB1163**

22mm Plastic Momentary START Push Button, Green, Flush



**SKU: LPXB203**

Extended Cap for Spring-return Actuators, Green



**SKU: LPL3**

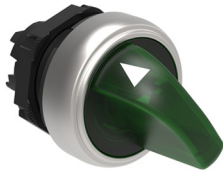
Green Indicator LED Light Head for 22mm LED Indicator, UL Listed



**SKU: LPXBL203**

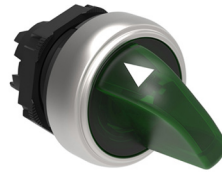
Extended Lens for Illuminated Spring-return Actuators, Green

**SKU: LPCSL1303**



Illuminated 3 Position Selector Switch, Green, Maintained

**SKU: LPCSL1313**



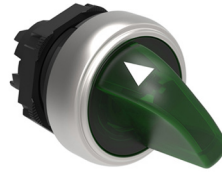
Illuminated 3 Position Selector Switch, Green, Center Maintained

**SKU: LPMLA3**



12v LED Panel Light, Green, 22mm, UL

**SKU: LPCSL1323**



Green Illuminated Selector Switch, 3 Position, Center Right Maintained

**SKU: LPMLB3**



24 volt LED Indicator Lights, Green, 22mm, UL

**SKU: LPCSL1213**



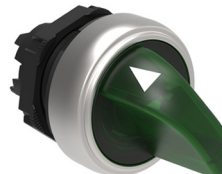
Illuminated 2 Position Selector Switch, Green, Maintained-Momentary

**SKU: LPMLD3**



48v LED Indicator Light, Green, 22mm, UL

**SKU: LPCSL1203**



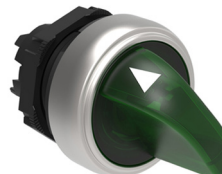
Illuminated Selector Switch, 2 Position, Green, Maintained, 22mm

**SKU: LPMLE3**



110v LED Indicator Light, Green, 22mm, UL

**SKU: LPCSL1333**



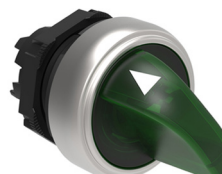
Green Illuminated Selector Switch, 3 Pos, Left-Center Maintained

**SKU: LPMLM3**



230v LED Indicator Light, Green, 22mm, UL

**SKU: LPCSL1203**



Illuminated Selector Switch, 2 Position, Green, Maintained, 22mm





**SKU: LPCB7345**

Start Stop Pause Switch-Momentary-I-Stop-II-22mm-Flush-Green-Red



**SKU: LPCB7365**

Open Close Stop Switch-w-Arrows-Momentary-22mm-Flush-Green-Red



**SKU: LPCB7355**

Up Down Stop Switch-w-Arrows-Momentary-22mm-Flush-Green-Red



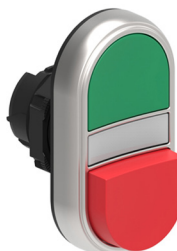
**SKU: LPCB7375**

Up Down Stop Push Switch-w-Diagonal-Arrows-Momentary-22mm-Green-Red



**SKU: LPCBL7113**

Illuminated Start Stop Switch-Momentary-22mm-Flush-Green-Red



**SKU: LPCBL7213**

Illuminated ON OFF Switch-Momentary-22mm-Flush-Green-Extended-Red



**SKU: LPCBL7123**

Illuminated ON OFF Switch-Momentary-I/O-Symbols-22mm-Flush-Green-Red



**SKU: LPCBL7223**

Illuminated ON OFF Switch-Momentary-22mm-Flush-Red-Green-I/O Symbols



**SKU: LPCB7123**

On Off Push Button with I/O Symbols, Momentary, Green/Red, Flush, 22mm



**SKU: LPCB7223**

On Off Push Button, I/O Symbols, Green Flush/Red Extended, 22mm



**SKU: LPCB7113**

Start Stop Push Button, Momentary, Green/Red, Flush, 22mm



**SKU: LPCB7213**

Start Stop Push Button, Flush Green, Extended Red, Silver Bezel, 22mm



**SKU: LPCBL7133**

Illuminated START STOP Push Button Switch  
22mm Operator



**SKU: LPCBL7233**

Illuminated START STOP Switch-Momentary-  
22mm-Flush-Green-Red



**SKU: LPCB7133**

Start Stop Push Button, Momentary, Green/  
Red, Flush, Silver Bezel, 22mm



**SKU: LPCB7233**

Start Stop Push Button, I/O Symbols, Green  
Flush/Red Extended, 22mm



**SKU: LPCR1006**

Momentary Reset Push Button, Flush, Blue,  
0-150mm Shaft



**SKU: LPCR1196**

22mm Plastic Momentary Push Button with  
RESET indication, Blue, Flush



**SKU: LPCB1176**

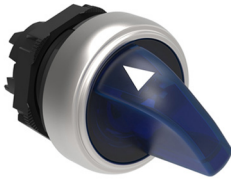
Momentary Push Button with RESET indica-  
tion, R Symbol, Blue, Flush



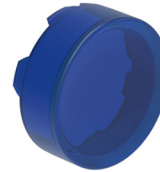
**SKU: LPXB106**  
Flush Cap for Spring-return Actuators, Blue



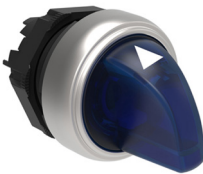
**SKU: LPXBL106**  
Flush Lens for Illuminated Spring-return Actuators, Blue



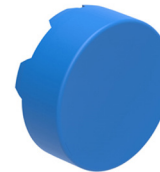
**SKU: LPCSL1206**  
Illuminated 2 Position Selector Switch, Blue, Maintained, 22mm



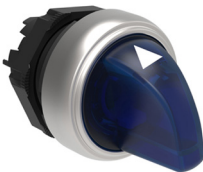
**SKU: LPXBL206**  
Extended Lens for Illuminated Spring-return Actuators, Blue



**SKU: LPCSL1216**  
Illuminated 2 Position Selector Switch, Blue, Maintained-Momentary



**SKU: LPXB206**  
Extended Cap for Spring-return Actuators, Blue



**SKU: LPCSL1306**  
Illuminated 3 Position Selector Switch, Blue, Maintained



**SKU: LPCB6146**  
Mushroom Push Button Switch, 40mm Head, Momentary Return, Blue



**SKU: LPCBL106**  
Illuminated Momentary Push Button Switch, Blue, Flush, 22mm



**SKU: LPCQL106**  
Illuminated Push On Push Off Button Switch, Flush, BLUE, 22mm



**SKU: LPCBL206**  
Illuminated Momentary Push Button Switch, Blue, Extended, 22mm

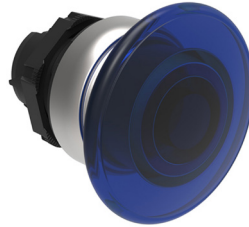


**SKU: LPCB306**  
Guarded Push Button with Momentary Return, Blue, 22mm



**SKU: LPCBL6646**

Blue Illuminated 40mm Mushroom Push Button, Latched, Normal Stopping



**SKU: LPCBL6146**

Illuminated, Momentary Return, Mushroom Push Button Switch, 40mm, Blue



**SKU: LPL6**

Blue Indicator LED Light Head for 22mm LED Indicator, UL Listed



**SKU: LPCB6166**

Blue Plastic Mushroom Push Button, Momentary, 60mm Head, 22mm Base



**SKU: LPMLA6**

12v LED Panel Light, Blue, 22mm, UL



**SKU: LPCQL206**

Illuminated Push On Push Off Button Switch, Extended, BLUE, 22mm



**SKU: LPMLB6**

24 volt LED Indicator Lights, Blue, 22mm, UL



**SKU: LPCQ206**

Push On-Push Off Button Switch, Extended, Blue, 22mm



**SKU: LPMLE6**

110v LED Indicator Light, Blue, 22mm, UL



**SKU: LPCB206**

Plastic Push Button, Momentary, Extended, Blue, 22mm



**SKU: LPCB106**

Blue Push Button, Momentary, Flush Mount, 22 mm



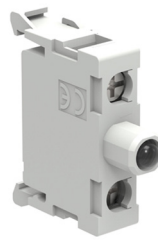
**SKU: LPCQ106**

Extended Cap for Spring-return Actuators, White



**SKU: LPXLPBB8**

Led Lamp Holder, 12-30V AC/DC, White



**SKU: LPXLPBB4**

Led Lamp Holder, 12-30V AC/DC, Red



**SKU: LPXLPB8**

Led Lamp Holder, 18/30V AC/DC, White



**SKU: LPXLFB4**

LED Lamp Holder, 18/30 V AC/DC Flash



**SKU: LPXLPE8**

Led Lamp Holder, 85/140Vac, White



**SKU: LPXLPBE4**

Led Lamp Holder, 85-140V AC/DC, Red



**SKU: LPXLFE8**

Led Lamp Holder, 85/140V AC Flash, White



**SKU: LPXLFE4**

Led Lamp Holder, 85/140V AC Flash, Red



**SKU: LPXLFM8**

Led Lamp Holder, 187/265Vac Flash, White



**SKU: LPXLFM4**

Led Lamp Holder, 187/265V AC Flash, Red



**SKU: LPXLPM8**

Led Lamp Holder, 187/265Vac, White



**SKU: LPXLPB5**

Led Lamp Holder, 18/30V AC/DC, Yellow





**SKU: LPXLFB5**  
 Led Lamp Holder,  
 18/30V AC/DC Flash,  
 Yellow



**SKU: LPXLFB3**  
 LED Lamp Holder,  
 18/30V AC/DC Flash,  
 Green



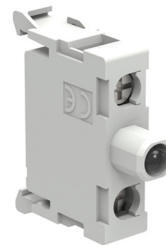
**SKU: LPXLFE5**  
 Led Lamp Holder,  
 85/140V AC Flash,  
 Yellow



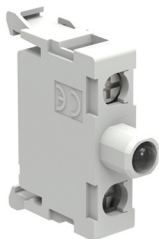
**SKU: LPXLPBB3**  
 Led Lamp Holder,  
 18/30V AC/DC, Green



**SKU: LPXLPM5**  
 Led Lamp Holder,  
 187/265Vac, Yellow



**SKU: LPXLPBB5**  
 Led Lamp Holder,  
 18/30V AC/DC, Green



**SKU: LPXLPBE5**  
 Led Lamp Holder, 85-  
 140V AC/DC, Yellow



**SKU: LPXLPBE3**  
 Led Lamp Holder, 85-  
 140V AC/DC, Green



**SKU: LPXLFM5**  
 Led Lamp Holder,  
 187/265Vac Flash,  
 Yellow



**SKU: LPXLPE3**  
 Led Lamp Holder,  
 85/140Vac, Green



**SKU: LPXLPB3**  
 Led Lamp Holder,  
 18/30V AC/DC, Green



**SKU: LPXLFE3**  
 Led Lamp Holder,  
 85/140V AC Flash,  
 Green



**SKU: LPXLPBB6**

Led Lamp Holder, 12-30V AC/DC, Blue



**SKU: LPXLFM6**

Led Lamp Holder, 187/265Vac Flash, Blue



**SKU: LPXLFB6**

Led Lamp Holder, 18/30V AC/DC Flash, Blue



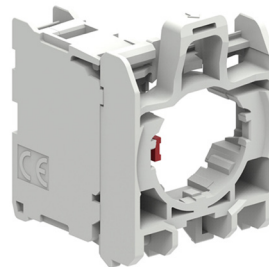
**SKU: LPXAU120**

Mounting Adapter for Plastic Push Buttons



**SKU: LPXLPB6**

Led Lamp Holder, 18/30V AC/DC, Blue



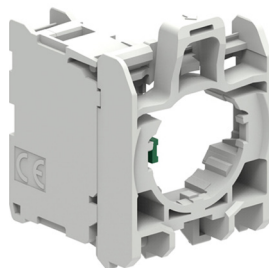
**SKU: LPXE01**

Disconnect Switch Auxiliary CONTACT 1NC C/W MNTG ADAPTER



**SKU: LPXLPBE6**

Led Lamp Holder, 85-140V AC/DC, Blue



**SKU: LPXE10**

Disconnect Switch Auxiliary CONTACT 1NA C/W MNTG ADAPTER



**SKU: LPXLPE6**

Led Lamp Holder, 85/140Vac, Blue



**SKU: LPXAU120M**

Mounting Adapter, 22mm Lovato Platinum Series Metal Push Buttons