



1P



2P

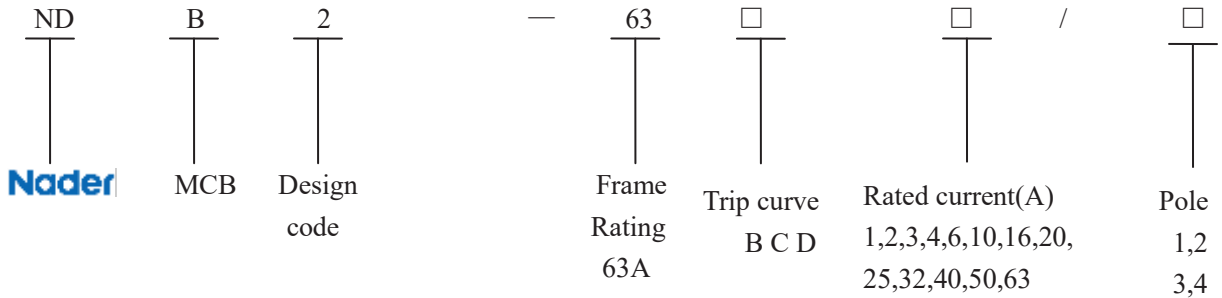


3P



4P

3. Model and implication:



4. Main technical specification

- electric parameter

Pole		1P	2P	3P	4P	certificate
Rating current		1A,2A,3A,4A,6A, 10A, 16A,20A,25A,32A,40A,50A,63A				
Item		Icn (SC)				
Voltage	AC	230/400	10kA	—	—	CCC TUV
		400/415V	--	10kA		
	DC	80V	10kA	—	—	
	AC	240V	7.5kA	—	—	UL1077
		277V	5kA	—	—	
		480V	—	7.5kA		
DC	60V	7.5kA	—	—		
	125 V	—	7.5 kA (2 IN SERIES)	—		

Isolation function

Practical breaking instructions

View window within the green identification said contact in the off position

Mechanical & electrical life 20,000 times

Tripping characteristic B type curve

Protection of short circuit current small load

Rated current 1A - 63A

The instantaneous tripping range 3 In 5 In

C type curve

Protect normal load and distribution wire cable

Rated Current 1A - 63A

The instantaneous tripping range 5 In 10 In

D type curve

Protect starting current big impact load

Such as motor, transformer

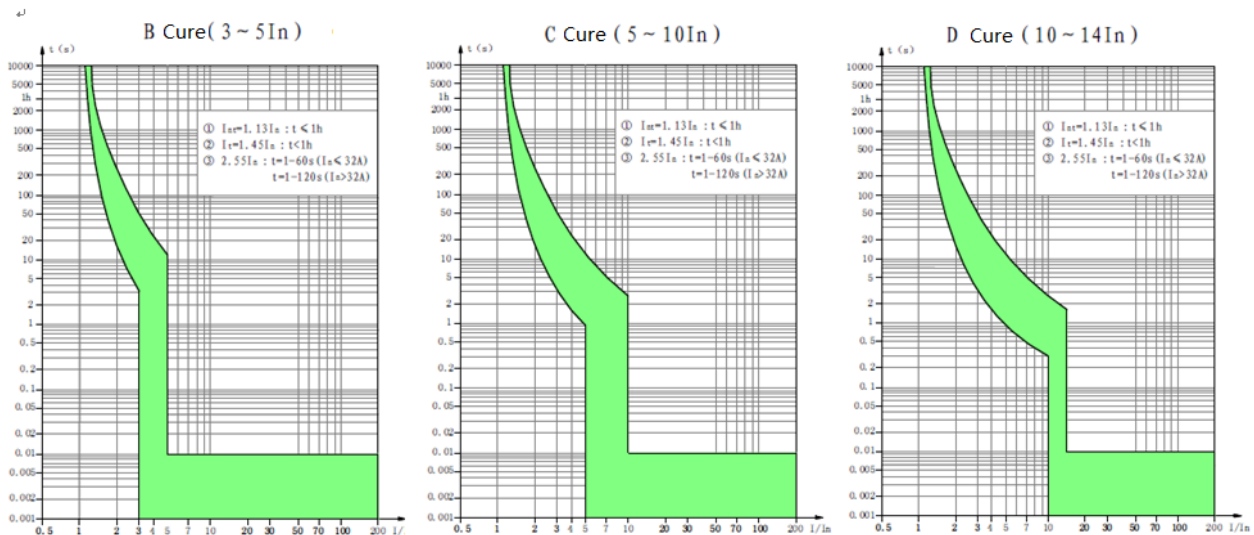
Rated Current 1A - 63A

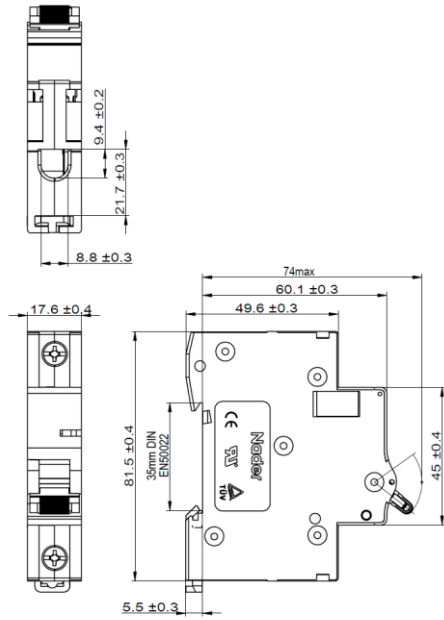
The instantaneous tripping range 10 In 14 In

Normal working environment

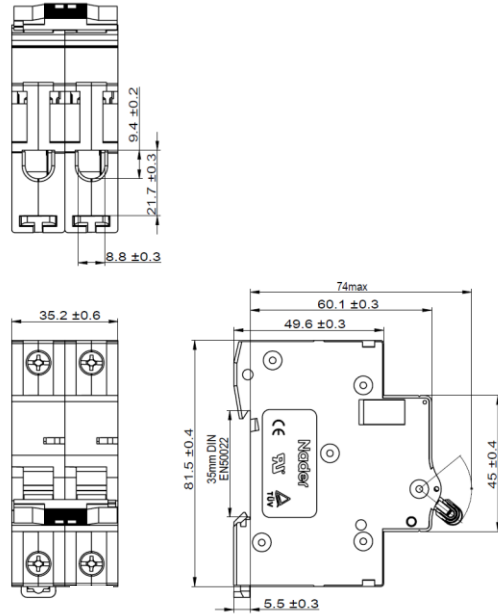
ambient temperature -40°C $+70^{\circ}\text{C}$

Air relative humidity $\leq 95\%$

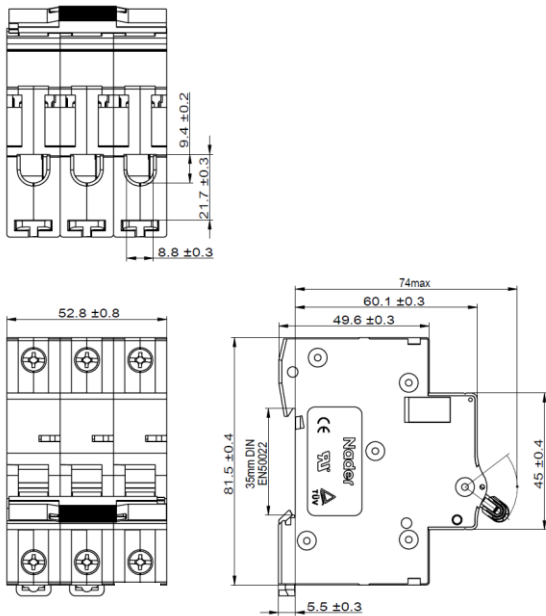




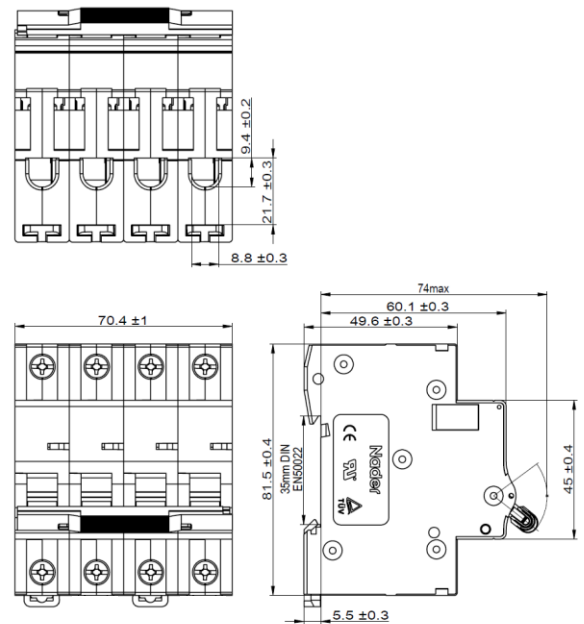
1P



2P



3P



4P