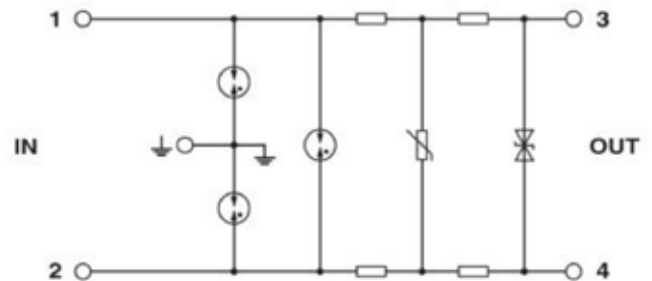




- Surge Suppressor Terminal Block
- For use in 0-10V, 0-20mA and 4-20mA Control Circuits
- 500 mA, 24 Vdc
- Double Tier, Feed Through Connection
- Screw Clamp Termination
- Gray Housing
- End Cover Included
- DIN Rail Mount 24-14AWG IP20 IEC061643-21:2000

Basic Circuit Diagram



Technical Data

Model No.		ASIDM24-S2A	
Nominal Voltage	U_N		24 V
Rated Voltage (Max)	U_C		33 V
Rated Voltage (Max)	U_C		23 V
Nominal Current	I_L		500 mA
Lightning Impulse Current (10/350)	Per Line	I_{imp}	1 kA
Nominal Discharge Current (8/20)	Per Line	I_n	5 kA
Nominal Discharge Current (8/20)	Total	I_n	10 kA
Output Voltage Limit 1000 V/ μ s	Line-Line	U_p	$\leq 45 V / \leq 600 V$
Output Residual Voltage 8/20 μ s	Line-Line	U_p	$\leq 53 V / \leq 600 V$
Series Impedance	Per Line	R	4 Ω
Response Time	Line-Line	T_A	≤ 1 ns
Response Time	Line- PG	T_A	≤ 100 ns
Operating Temperature Range			-40°C...+80°C
Wire Range			0.2 mm ² ~ 2.5 mm ²
Mounting			35 mm DIN Rail in accordance with EN50022/DIN 46277-3
Enclosure Material			Gray Thermoplastic, UL 94-V0
Protection Class			IP20
Enclosure Size			79.6 mm (D), 6.2 mm (W), 54.6 mm (H)