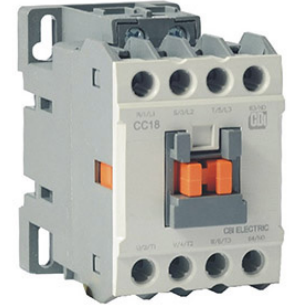


ASI Contactors

AC Type: CC18-110, CC18-230
DC Type: CDC18-12, CDC18-24

- IEC 3 Pole Contactor with 1 NO Auxiliary Contact
- Meets IEC, UL, and CSA standards requirements
- Screw Clamp Terminals for easy wiring
- Other sizes of IEC Contactors available upon request.



Frame Size/Type		CC/CDC18
Number of Poles		3 pole
Coil Voltage	CC18-110	120 Vac
	CC18-230	240 Vac
	CDC18-12	12 Vdc
	CDC18-24	24 Vdc
Rated Operational Voltage Ue		690V
Rated Insulation Voltage Ui		690V
Rated Frequency		50/60Hz
Rated Impulse Withstand Voltage, Uimp		6kV
Maximum Operating Rate in Operating Cycles per Hour (AC3)		1800 cycles
Durability, Mechanical		15 million operations
Durability, Electrical		2.5 million operations
Resistive Amperage AC-1, Thermal		32A
Full Load Amperage and Power AC-3, 200/240V		18A
		4.5kW
UL Rating (50/60Hz) Continuous Current		32A
UL Rating (50/60Hz) HP Single Phase 110-120V		1HP
UL Rating (50/60Hz) HP Single Phase 220-240V		3HP
UL Rating (50/60Hz) HP Three Phase 200-208V		7.5HP
UL Rating (50/60Hz) HP Three Phase 220-240V		7.5HP
UL Rating (50/60Hz) HP Three Phase 400-480V		10HP
UL Rating (50/60Hz) HP Three Phase 550-600V		15HP
NEMA Size		0
AC Control Weight		0.33kg (11.64oz)
AC Control Size		45 x 73.5 x 80.4mm
DC Control Weight		0.5kg (17.64oz)
DC Control Size		45 x 73.5 x 96.6mm
Screw Clamp Terminals		M4
Wire Range (AWG)		16-8AWG
Wire Type		Stranded/Solid
Torque		20lb-in

