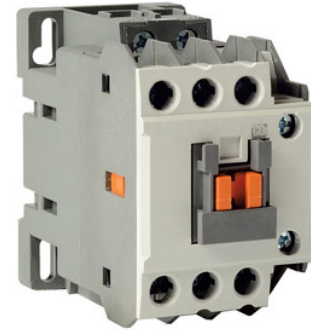


ASI Contactors

AC Type: CC22-110, CC22-230
DC Type: CDC22-12, CDC22-24

- IEC 3 Pole Contactor with 1 NO Auxiliary Contact
- Meets IEC, UL, and CSA standards requirements
- Screw Clamp Terminals for easy wiring
- Other sizes of IEC Contactors available upon request.



| Frame Size/Type | | CC/CDC22 |
|---|----------|------------------------|
| Number of Poles | | 3 pole |
| Coil Voltage | CC22-110 | 120 Vac |
| | CC22-230 | 240 Vac |
| | CDC22-12 | 12 Vdc |
| | CDC22-24 | 24 Vdc |
| Rated Operational Voltage Ue | | 690V |
| Rated Insulation Voltage Ui | | 690V |
| Rated Frequency | | 50/60Hz |
| Rated Impulse Withstand Voltage, Uimp | | 6kV |
| Maximum Operating Rate in Operating Cycles per Hour (AC3) | | 1800 cycles |
| Durability, Mechanical | | 15 million operations |
| Durability, Electrical | | 2.5 million operations |
| Resistive Amperage AC-1, Thermal | | 40A |
| Full Load Amperage and Power AC-3, 200/240V | | 22A |
| | | 5.5kW |
| UL Rating (50/60Hz) Continuous Current | | 40A |
| UL Rating (50/60Hz) HP Single Phase 110-120V | | 2HP |
| UL Rating (50/60Hz) HP Single Phase 220-240V | | 3HP |
| UL Rating (50/60Hz) HP Three Phase 200-208V | | 7.5HP |
| UL Rating (50/60Hz) HP Three Phase 220-240V | | 10HP |
| UL Rating (50/60Hz) HP Three Phase 400-480V | | 15HP |
| UL Rating (50/60Hz) HP Three Phase 550-600V | | 20HP |
| NEMA Size | | 1 |
| AC Control Weight | | 0.34kg (11.99oz) |
| AC Control Size | | 45 x 73.5 x 87.4mm |
| DC Control Weight | | 0.51kg (17.99oz) |
| DC Control Size | | 45 x 73.5 x 103.6mm |
| Screw Clamp Terminals | | M4 |
| Wire Range (AWG) | | 14-8AWG |
| Wire Type | | Stranded/Solid |
| Torque | | 20lb-in |

