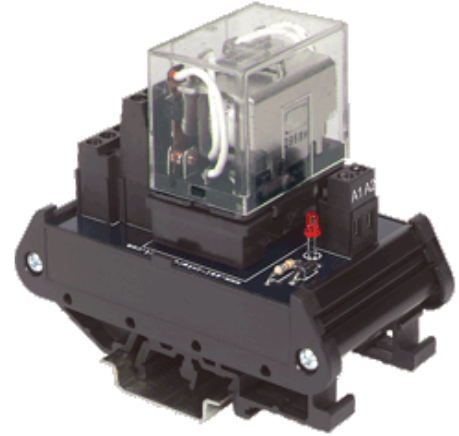


The IMRL series relay modules from ASI feature an open construction style enabling visual contact inspection. The IMRL relay modules are available in a variety of coil voltages with a four form C contact configuration. **ASI** has designed these modules for use in industrial automation equipment and applications. Both fixed and pluggable relay versions are available, as well as a base-only version.

In order to ensure control system reliability for your industrial automation equipment, the IMRL 4 relay modules have been designed with the coil and contact points physically separated. This separation allows complete isolation of controller and end device wiring to be maintained when building a control panel. IMRL versions with DC control feature a built-in diode across the coil to prevent damage to sensitive controls from inductive kickback when relays are de-energized.



For modules without indication, contact **ASI** for type/catalog numbers.

4 POLE RELAY

PLUGGABLE RELAYS, with indication			
TYPE	CATALOG NO.	HEIGHT	VOLTAGE
IMRL006P4	14030	3.26" (82.8mm)	6 VDC
IMRL012P4	14031	3.26" (82.8mm)	12 VDC
IMRL024P4	14032	3.26" (82.8mm)	24 VDC
IMRL025P4	14033	3.26" (82.8mm)	24 VAC
IMRL120P4	14034	3.26" (82.8mm)	120 VAC
IMRL230P4	14035	3.26" (82.8mm)	230 VAC

FIXED RELAYS, with indication			
TYPE	CATALOG NO.	HEIGHT	VOLTAGE
IMRL006F4	14048	2.74" (69.6mm)	6 VDC
IMRL012F4	14049	2.74" (69.6mm)	12 VDC
IMRL024F4	14050	2.74" (69.6mm)	24 VDC
IMRL025F4	14051	2.74" (69.6mm)	24 VAC
IMRL120F4	14052	2.74" (69.6mm)	120 VAC
IMRL230F4	14053	2.74" (69.6mm)	230 VAC

SOCKET ONLY, with indication			
TYPE	CATALOG NO.	HEIGHT	VOLTAGE
IMRL000B4	14092 (without indication)		Any
IMRL024B4	14086		24 VDC
IMRL120B4	14088		120 VAC
IMRL230B4	14089		230 VAC

CONTACT TECHNICAL DATA		
	RESISTIVE LOAD p.f. = 1.0	INDUCTIVE LOAD p.f. = 0.4
Max. load current	10A at 110 VAC 10A at 24 VDC	7.5 at 110 VAC 5 A at 24 VDC
Max. switching voltage	250 VAC, 125 VDC	250 VAC, 125 VDC
Max. switching capacity	1100 VA, 240W	8300 VA, 120W
Minimum load	100mA, 5 VDC	100mA, 5 VDC
Contact material	AgCdO	AgCdO
Operating frequency mechanical	18,000/hr	18,000/hr
Operating frequency electrical	1,800/hr @ rated load	1,800/hr @ rated load
Contact resistance	50 mΩ	50 mΩ
Pull in time	25 mSec	25 mSec
Drop out time	24 mSec	25 mSec

COIL TECHNICAL DATA							
COIL VOLTAGE	COIL CURRENT	COIL RESISTANCE	COIL VOLTAGE	PICK UP VOLTAGE	DROP OUT VOLTAGE	MAX. POWER	MAX. VOLTAGE
6 VDC	150mA	40W	6 VDC	4.8 VDC	.6 VDC	~ .9W	6.6 VDC
12 VDC	75mA	160W	12 VDC	9.6 VDC	1.2 VDC	~ .9W	13.2 VDC
24 VDC	36.9 mA	6.50W	24 VDC	19.2 VDC	2.4 VDC	~ .9W	26.4 VDC
120 VAC	10.8 mA	4.43KW	120 VAC	96 VAC	33 VAC	~ 1.1W	132 VAC
230 VAC	5.3 mA	18.79KW	230 VAC	192 VAC	66 VAC	~ 1.1W	264 VAC

IMRL...4 TYPICAL SCHEMATIC

