

Signal beacons Ø62mm / Ø2.44"



LB6 EL ...
LB6 GL ...
LB6 S2...

| Order code | Description | Qty per pkg | Wt |
|------------|-------------|-------------|------|
| | | n° | [kg] |

Steady light modules. BA15d fitting.
Bulb not included.

| | | | |
|-----------|--------|---|-------|
| 8 LB6 EL1 | Orange | 1 | 0.060 |
| 8 LB6 EL3 | Green | 1 | 0.060 |
| 8 LB6 EL4 | Red | 1 | 0.060 |
| 8 LB6 EL5 | Yellow | 1 | 0.060 |
| 8 LB6 EL6 | Blu2 | 1 | 0.060 |
| 8 LB6 EL8 | White | 1 | 0.060 |

Blinking or steady light modules. BA15d fitting.
Bulb not included.

| | | | |
|-------------|---------------------|---|-------|
| 8 LB6 GL B1 | Orange, 12-48VAC/DC | 1 | 0.060 |
| 8 LB6 GL B3 | Green, 12-48VAC/DC | 1 | 0.060 |
| 8 LB6 GL B4 | Red, 12-48VAC/DC | 1 | 0.060 |
| 8 LB6 GL B5 | Yellow, 12-48VAC/DC | 1 | 0.060 |
| 8 LB6 GL B6 | Blue, 12-48VAC/DC | 1 | 0.060 |
| 8 LB6 GL B8 | White, 12-48VAC/DC | 1 | 0.060 |
| 8 LB6 GL M1 | Orange, 24-230VAC | 1 | 0.060 |
| 8 LB6 GL M3 | Green, 24-230VAC | 1 | 0.060 |
| 8 LB6 GL M4 | Red, 24-230VAC | 1 | 0.060 |
| 8 LB6 GL M5 | Yellow, 24-230VAC | 1 | 0.060 |
| 8 LB6 GL M6 | Blue, 24-230VAC | 1 | 0.060 |
| 8 LB6 GL M8 | White, 24-230VAC | 1 | 0.060 |

Sound-light pulsed or continuous modules. Bulb included.

| | | | |
|-------------|-------------------------|---|-------|
| 8 LB6 S2 B1 | Orange, 24VAC/DC (80dB) | 1 | 0.060 |
| 8 LB6 S2 B3 | Green, 24VAC/DC (80dB) | 1 | 0.060 |
| 8 LB6 S2 B4 | Red, 24VAC/DC (80dB) | 1 | 0.060 |
| 8 LB6 S2 B5 | Yellow, 24VAC/DC (80dB) | 1 | 0.060 |
| 8 LB6 S2 B6 | Blue, 24VAC/DC (80dB) | 1 | 0.060 |
| 8 LB6 S2 B8 | White, 24VAC/DC (80dB) | 1 | 0.060 |

General characteristics

Signal beacons are fundamental elements in manufacturing processes for the visual and audible signalling of the system status.

Technical characteristics

- Maximum operational voltage: 250VAC/DC
- Consumption of sound modules LB6 S2...: 150mA
- Material: Polycarbonate
- Connections: Screw clamp terminals, maximum 1.5mm²/16 AWG conductor section
- Tightening torque: 0.5Nm/4.5lbin
- Operating temperature: -20...+50°C
- Degree of protection IEC/EN: IP54; IP30 if used with 8 LB6 BP 04, 8 LB6 BP 06 or 8 LB6 BP 08.

Reference standards

Compliant with standards: IEC/EN 60947-5-1, IEC/EN 60947-1.

Combinations



| Visual code | Red | Yellow Orange | Blue | Green | White |
|--------------------|--|--|---|--|-----------------------------|
| Meaning | Danger. Emergency. | Warning and Caution. Abnormal situation. | Mandatory command. | Normal situation. Regular operation. | No specific meaning. |
| Sound | Fast modulated repetition or high-pitch pulsing. | Continuous short sound. | Alternating sound at constant tone | Constant and prolonged sound after an alarm. | Other sounds. |
| Correlated actions | Immediate intervention to deal with dangerous situation. | Control intervention required. | Intervention needed for mandatory action. | No specific action. | Depending on the situation. |

Interpretation of light and sound signals for signal towers and beacons

Light and sound signals are a fundamental element for the safety of a system. To avoid incorrect interpretations, a European standard has been introduced defining an unequivocal meaning to visual or audible signalling devices. Each colour or sound alarm corresponds to a specific state of operation of the connected system and various levels of warning, as given in the following table, according to EN 981-IEC/EN 60073 standards. The white coloured module does not have a specific meaning so it can be used as one may need.

Accessories and spare parts for signal towers and beacons



LT7 BP 01



LT7 BP 02



LT7 ALB...



LT7 ALL...



| Order code | Description | Qty per pkg | Wt |
|--|--|-------------|-------|
| | | n° | [kg] |
| Fixing bases. | | | |
| 8 LT7 BP 01 | Horizontal surface mount, black plastic with 100mm/3.94" extension | 1 | 0.045 |
| 8 LT7 BP 02 | Vertical wall mount, black plastic | 1 | 0.078 |
| Extension tube for plastic base, stackable sections. | | | |
| 8 LT7 TP 0100 | 100mm/3.94", black plastic | 1 | 0.029 |
| Incandescent bulb, 5W, BA15d fitting. | | | |
| 8 LT7 ALB A | 12VAC/DC | 10 | 0.006 |
| 8 LT7 ALB B | 24VAC/DC | 10 | 0.006 |
| 8 LT7 ALB E | 130VAC/DC | 10 | 0.006 |
| 8 LT7 ALB M | 260VAC/DC | 10 | 0.006 |
| LED bulb, BA15d fitting. | | | |
| 8 LT7 ALL A4 | Red, 12VAC/DC | 1 | 0,010 |
| 8 LT7 ALL A8 | White, 12VAC/DC | 1 | 0,010 |
| 8 LT7 ALL B3 | Green, 24VAC/DC | 1 | 0,010 |
| 8 LT7 ALL B4 | Red, 24VAC/DC | 1 | 0,010 |
| 8 LT7 ALL B5 | Yellow/Orange, 24VAC/DC | 1 | 0,010 |
| 8 LT7 ALL B6 | Blue, 24VAC/DC | 1 | 0,010 |
| 8 LT7 ALL B8 | White, 24VAC/DC | 1 | 0,010 |
| 8 LT7 ALL E3 | Green, 110-120VAC | 1 | 0,010 |
| 8 LT7 ALL E4 | Red, 110-120VAC | 1 | 0,010 |
| 8 LT7 ALL E5 | Yellow/Orange, 110-120VAC | 1 | 0,010 |
| 8 LT7 ALL E6 | Blue, 110-120VAC | 1 | 0,010 |
| 8 LT7 ALL E8 | White, 110-120VAC | 1 | 0,010 |
| 8 LT7 ALL M3 | Green, 230-240VAC | 1 | 0,010 |
| 8 LT7 ALL M4 | Red, 230-240VAC | 1 | 0,010 |
| 8 LT7 ALL M5 | Yellow/Orange, 230-240VAC | 1 | 0,010 |
| 8 LT7 ALL M6 | Blue, 230-240VAC | 1 | 0,010 |
| 8 LT7 ALL M8 | White, 230-240VAC | 1 | 0,010 |

① Used with yellow or orange light modules.

Accessories and spare parts for signal towers Ø70mm / Ø2.75" only



LT7 BM 01



LT7 BM 02

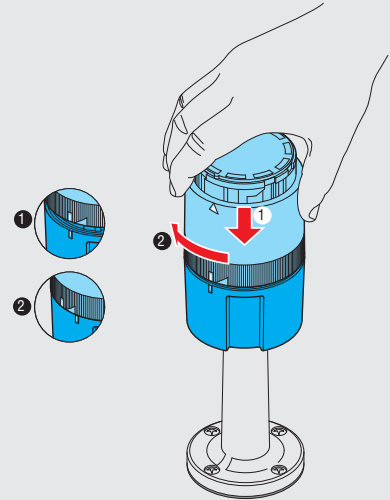


LT7 TM

| Order code | Description | Qty per pkg | Wt |
|---|---|-------------|-------|
| | | n° | [kg] |
| Fixing bases. | | | |
| 8 LT7 BM 01 | Horizontal surface mount, metal, black finish | 1 | 0.099 |
| 8 LT7 BM 02 | Vertical wall mount, metal | 1 | 0.184 |
| Extension tubes for metal base, anodised aluminium, fixed non-stackable sections. | | | |
| 8 LT7 TM 0100 | 100mm / 3.94" | 1 | 0.016 |
| 8 LT7 TM 0150 | 200mm / 7.9" | 1 | 0.024 |
| 8 LT7 TM 0300 | 300mm / 11.8" | 1 | 0.048 |
| 8 LT7 TM 0400 | 400mm / 15.75" | 1 | 0.064 |
| 8 LT7 TM 0500 | 500mm / 19.7" | 1 | 0.080 |
| 8 LT7 TM 1000 | 1000mm / 39.4" | 1 | 0.160 |

General characteristics

The assembly operation of the signal towers is simple and fast and does not require the use of any tools. The fixing of each element on top of the other is obtained by the bayonet insert joint, with slight pressure and simple rotating movement. There are specific white inscriptions to indicate the correct alignment.



Technical characteristics

– Consumption of bulb fitted on light modules:

- LT7 ALB A: 420mA
- LT7 ALB B: 210mA
- LT7 ALB E: 43mA
- LT7 ALB M: 22mA
- LT7 ALL A...: <60mA
- LT7 ALL B...: <30mA
- LT7 ALL E...: <20mA
- LT7 ALL M...: <20mA.

Reference standards

Compliant with standards: IEC/EN 60947-5-1, IEC/EN 60947-1, UL508, CSA C22.2 n° 14.

Accessories and spare parts for signal beacons Ø62mm / Ø2.44"



LB6 BP03



LB6 BP05



LB6 BP07



LB6 BP04



LB6 BP06

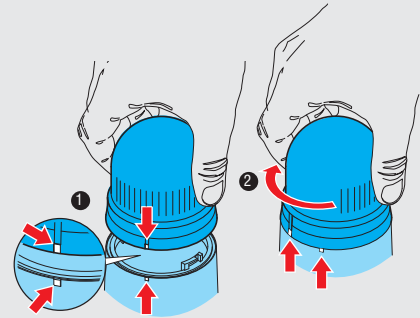


LB6 BP08

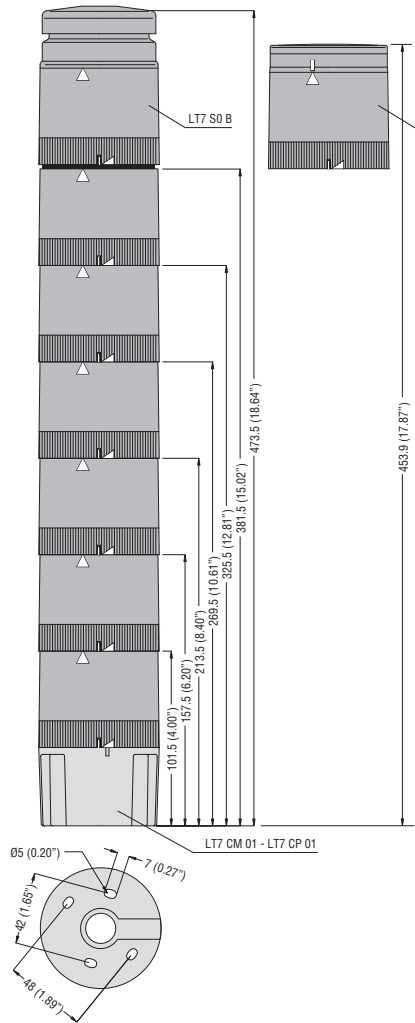
| Order code | Description | Qty per pkg n° | Wt [kg] |
|---------------------------------|--|-------------------|------------|
| Fixing bases for light modules. | | | |
| 8 LB6 BP 03 | Horizontal surface mount, plastic, black colour | 1 | 0.040 |
| 8 LB6 BP 05 | For Ø22mm / Ø0.87" hole type, black plastic | 1 | 0.040 |
| 8 LB6 BP 07 | For extension connection, plastic, black colour. Use with fixing bases 8 LT7 BP 01 and 8 LT7 BP 02 | 1 | 0.020 |
| Fixing bases for sound modules. | | | |
| 8 LB6 BP 04 | Horizontal surface mount, plastic, black colour | 1 | 0.040 |
| 8 LB6 BP 06 | For Ø22mm / Ø0.87" hole type, black plastic | 1 | 0.040 |
| 8 LB6 BP 08 | For extension connection, plastic, black colour. Use with fixing bases 8 LT7 BP 01 and 8 LT7 BP 02 | 1 | 0.020 |

General characteristics

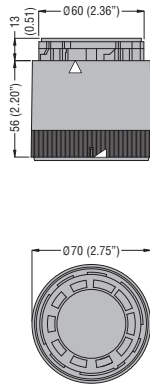
The assembly operation of the signal beacons is simple and fast and does not require the use of any tools. There are specific white marks to indicate the correct alignment.



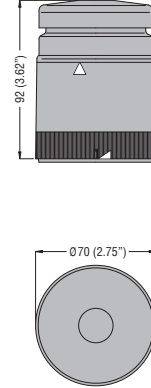
SIGNAL TOWERS Ø70mm / Ø2.75"



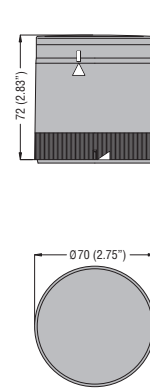
Light modules
LT7 EL...
LT7 GL...
LT7 FL...



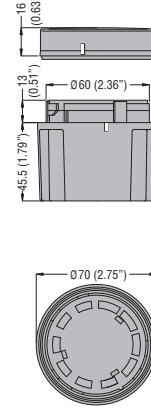
Sound modules
LT7 SO B



LT7 S1...
LT7 S2...

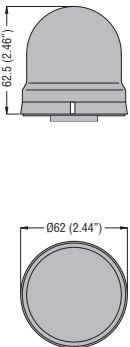


Connection modules
LT7 CM 01
LT7 CP 01

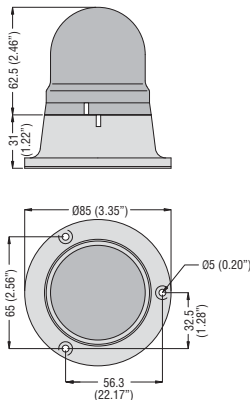


SIGNAL BEACONS Ø62mm / Ø2.44"

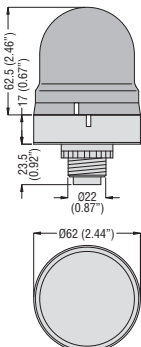
LB6 EL...
LB6 GL...
LB6 S2...



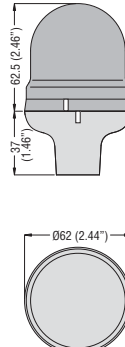
LB6...
 with base **LB6 BP 03**
 and **LB6 BP 04** ①



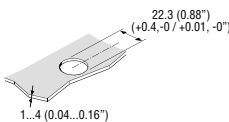
LB6...
 with base **LB6 BP 05**
 and **LB6 BP 06** ①



LB6...
 with base **LB6 BP 07**
 and **LB6 BP 08** ①

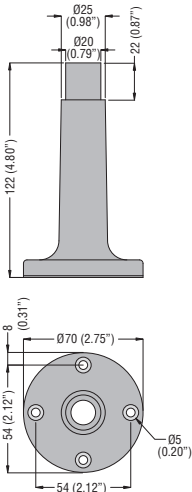


① With slits for sound light modules LB6 S2...

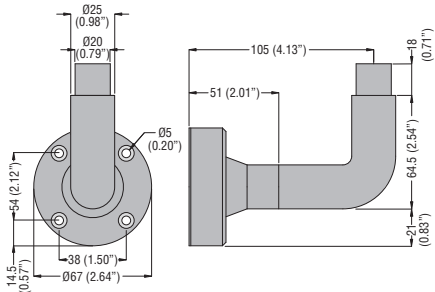


ACCESSORIES - Extensions and bases

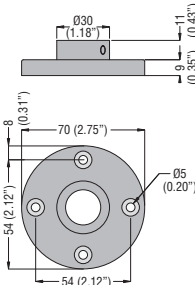
LT7 BP 01



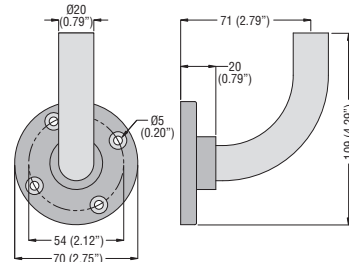
LT7 BP 02



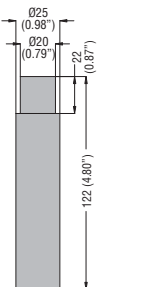
LT7 BM 01



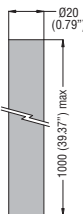
LT7 BM 02



LT7 TP 0100

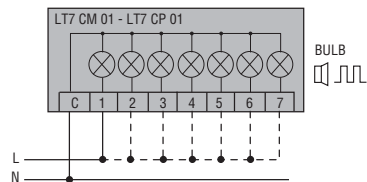


LT7 TM...



Wiring diagrams

SIGNAL TOWERS Ø 70mm
LT7...



Connect terminals C and 1 as indicated to power the first module. If other modules are fitted, the respective terminals must be connected accordingly.

SIGNAL BEACONS Ø 62mm
LB6...

