

## Single-Phase Switching Power Supply 120-230 Vac, 15 W Output Power XCSD1015W

- Single-phase input 85...264 Vac / DC 100...370 Vdc
- Short circuit, overload, over temperature, input / output overvoltage protections
- Isolation Class 2, no grounding needed
- Compact dimensions
- Suitable for applications in SELV and PELV circuits



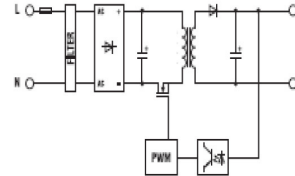
35x62xH90

### NOTES

The depth dimension includes the DIN rail clamp.

- (1) With 85...100 Vdc input, constant power, the output current shall be reduced by 30%
- (2) Please apply a derating factor of -0.015 A/°C (24Vdc version) or -0.03 A/°C (12Vdc version) for temperature above 55°C
- (3) The value of the supplied current also depends upon the line resistance

### BLOCK DIAGRAM



### VERSIONS

Output 24 Vdc  
Output 12 Vdc

Cod. XCSD1015W024VAA

Cod. XCSD1015W012VAA

CSD1015W024VAA

CSD1015W012VAA

### INPUT TECHNICAL DATA

Input rated voltage

120-230 Vac (range 85...264 Vac / 100...370 Vdc) (1)

Frequency

47...63 Hz

Current @ nominal Iout (Uin 120 / 230 Vac)

0.3 A / 0.12 A ± 10%

Inrush peak current

< 5 A

Power factor

> 0.6

Internal protection fuse

T 1 A replaceable

External protection on AC line

circuit breaker: 2 A - C characteristic - fuse: T 2 A

### OUTPUT TECHNICAL DATA

Output rated voltage

24 Vdc

12 Vdc

Output adjustable range

—

—

Continuous current

0.6 A @ 55°C (2)

1.2 A @ 55°C (2)

Overload limit

>0.81 A (3)

>1.6 A (3)

Short circuit peak current

—

—

Load regulation

< 1%

< 1%

Ripple @ nominal ratings

≤ 50 mVpp

≤ 50 mVpp

Hold up time @ In (Uin 120 / 230 Vac)

>12 ms / >20 ms

>12 ms / >20 ms

Overload / short circuit protections

hiccup at the overload limit with auto reset / over temperature protection

Status signals

"DC OK" green LED

Uout threshold for alarm contact

—

—

Parallel connection

possible

possible

Redundant parallel connection

possible with external ORing diode

possible with external ORing diode

### GENERAL TECHNICAL DATA

Efficiency (Uin 120 / 230 Vac)

>86% / >86%

>84% / >85%

Dissipated power (Uin 120 / 230 Vac)

2,2 W / 2,2 W

2,7 W / 2,6 W

Operating temperature range

-20...+60°C, with derating over 55°C / thermal protection (2)

Input / output isolation

3 kVac / 60 s - SELV output

Input / ground isolation

class 2 without PE connection

Output / ground isolation

class 2 without PE connection

Standard / approvals

IEC950, EN60950, UL508, UL60950

EMC Standards

EN61000-6-2, EN61000-6-3

Overvoltage category / Pollution degree

II / 2

Protection degree

IP 20

Connection terminal

2.5 mm<sup>2</sup>, screw type fixed (24-12 AWG)

Housing material

UL94V-0 plastic material

Approx. weight

130 g

Mounting information

vertical on rail, allow 10 mm spacing between adjacent components

### MOUNTING ACCESSORIES

Mounting rail type according to IEC60715/TH35-7.5

PR/3/AC, PR/3/AC/ZB, PR/3/AS, PR/3/AS/ZB