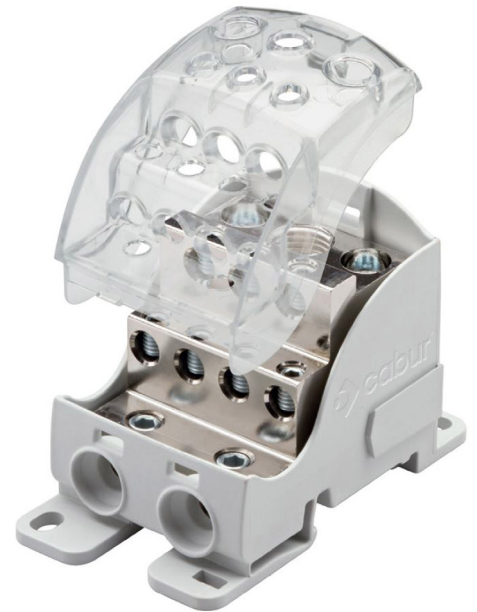


GENERAL FEATURES

- Mounts onto TH/35 type DIN rails conforming to IEC 60715 standards or directly to the panel.
- Includes molded dovetails allowing the interconnection of equal or different sized terminal blocks.
- Housings are molded UL94V-0 Polyamide 6.6 gray, RAL 7035
- Wiring terminals are intentionally offset for better visibility of conductors during and after installation.
- Conforming to EN 60947-7-1 and UL 1059 standards.
- Terminal screws are captive
- Conforms to EN 60947-7-1 and UL 1059
- Input Terminal:
For solid or prepared conductors to Input Terminal: For Solid Wire, Crimped Stranded Wire, or Flexibar Conductors



ADVANTAGES

- Easy installation on 35 mm DIN rail or panel
- Versatile power input via solid/stranded conductors or busbar
- Options for five or nine output terminals
- IP20 Protection against dust
- Touch safe design
- Interlocking QBLOks connect up to 5 modules
- Transparent cover keeps terminal screws captive
- Horizontal or vertical combinations of up to 5 poles can be installed on DIN rails or directly on panels.



rated cross-section



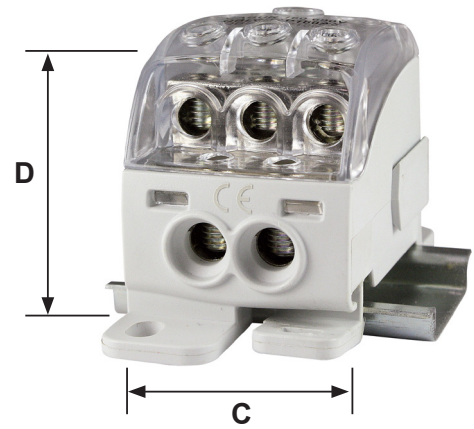
mounting



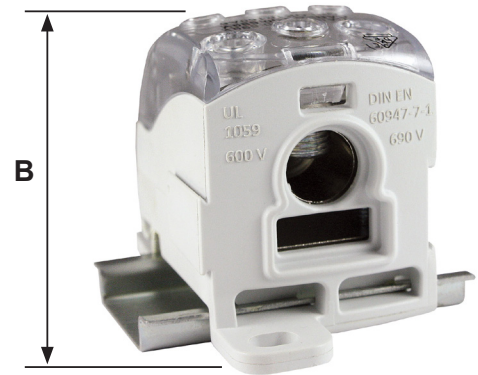
couplings

Single Pole Power Distribution Terminal Blocks QBLOK1P Series

Catalog Number	Dimensions in. (mm)				
	A	B	C	D	E
QBLOK1P160	2.933 (74.5)	1.984 (50.4)	1.614 (41.0)	1.787 (45.4)	2.47 (62.7)
QBLOK1P250	3.740 (95.0)	3.032 (77.0)	2.071 (52.6)	2.854 (72.5)	3.238 (82.2)
QBLOK1P400	3.740 (95.0)	3.032 (77.0)	2.071 (52.6)	2.854 (72.5)	3.238 (82.2)



Catalog Number	Line			
	Amps	Conductor Opening Per Pole	UL Rated Range AWG	Screw Drive
QBLOK1P160	150		(1) 2/0-8 3.2x15.5 mm	5 mm Hex 2.5 mm Hex
QBLOK1P250	250		(1) 250mcm-2 10x24 mm	6 mm Hex 3 mm Hex
QBLOK1P400	310		(1) 350mcm-3/0 10x24 mm	6 mm Hex 3 mm Hex



Catalog Number	Load		
	Conductor Opening Per Pole	UL Rated Range AWG	Screw Drive
QBLOK1P160		(3) 6-16 (2) 4-14	3 mm Hex 3 mm Hex
QBLOK1P250		(3) 4-14 (4) 6-16 (2) 2-12	3 mm Hex 3 mm Hex 4 mm Hex
QBLOK1P400		(3) 4-14 (4) 6-16 (2) 2-12	3 mm Hex 3 mm Hex 4 mm Hex

