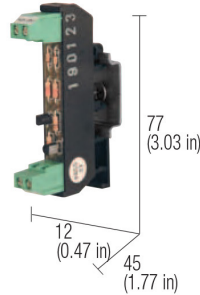


### NPN and PNP signal polarity inverter

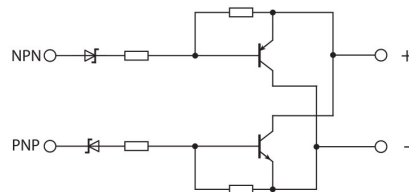
- Converts a NPN sensor in a PNP sensor and vice versa
- Compact design



#### NOTES

The dimensions include the terminal blocks and the DIN clamp.  
(1) range 17...30 Vdc

#### BLOCK DIAGRAM



#### VERSIONS

Cat. No. XNPNPNP
CI-NPN/PNP

#### APPLICATIONS

It converts signal form PNP sensors into NPN signal and vice versa. It allows to adapt the PLC inputs to all sensors on the market, regardless of their output polarity, and it is a great help for maintenance and allows in any case a quick replacement of failed sensors when you need a PNP sensor but you have a NPN type.

#### INPUT TECHNICAL DATA

Input voltage	24 Vdc (1)
Max. current	200 mA
Max. frequency	120 KHz

#### GENERAL TECHNICAL DATA

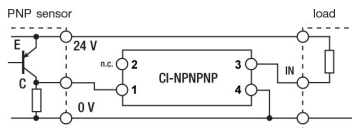
OFF state current	—
ECM standards	EN 61000-6-2, EN 61000-6-4
Reference Standard	IEC 664-1, DIN VDE
Overvoltage category	II
Pollution degree	2
Protection degree	IP 20 IEC 529 EN60529
Operating temperature range	0...55°C
Connection terminal	morsetti a vite 2.5 mm2 fissi
Housing material	Poliammide UL94V-0
Approx. weight	20 g (0.71 oz)
Mounting information	vertical on rail adjacent without gap

#### MOUNTING ACCESSORIES

Mounting rail type according to IEC60715/TH35-7.5	PR/3/AC, PR/3/AS
Mounting rail type according to IEC60715/G32	PR/DIN/AC - PR/DIN/AS - PR/DIN/AL
Plug-in jumper	red — white — blue —

#### EXAMPLE

Conversion from PNP to NPN



Conversion from NPN to PNP

