

- **ASI A-101590G, A-101600G, A-101737G, A-101892G** is a Series of Motor Reversing Drum Switches
- Featuring IP65 High Impact Thermoplastic Enclosures
- Fwd/Rev and Up/Dwn Labels
- Operating Handle
- For use with Single or Three Phase Motors
- Manual Maintained Return
- Momentary Return
- Up to 2 Horsepower for Single Phase Motors
- Up to 15 Horsepower for Three Phase Motors
- cULus Listed
- Ideal for AC Motors in all types of Industrial Applications

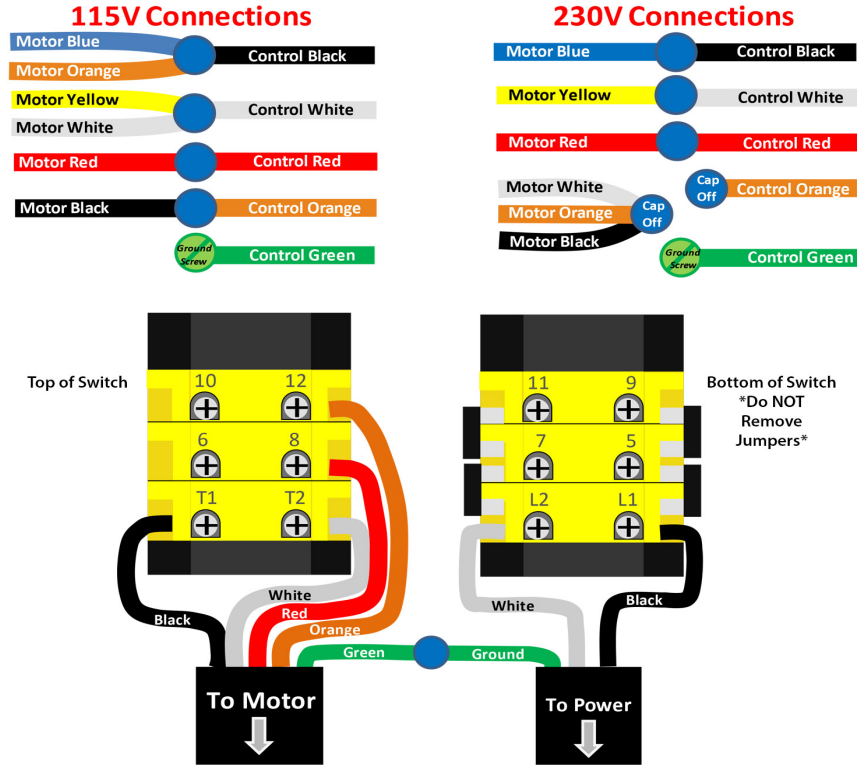


<b>Motor Reversing MAINTAINED Switch Selection by Phase/Voltage/Horsepower</b>					
<b>Part Number</b>	<b>Single Phase</b>		<b>Three Phase</b>		<b>Mounting Type</b>
	<b>120 Vac</b>	<b>240 Vac</b>	<b>240 Vac</b>	<b>480 Vac</b>	
<b>A-101590G</b>	<b>1.5 HP Max</b>	<b>2 HP Max</b>	-	-	<b>Enclosed</b>
<b>A-101737G</b>	-	-	<b>10 HP Max</b>	<b>15 HP Max</b>	<b>Enclosed</b>

<b>Motor Reversing MOMENTARY Switch Selection by Phase/Voltage/Horsepower</b>					
<b>Part Number</b>	<b>Single Phase</b>		<b>Three Phase</b>		<b>Mounting Type</b>
	<b>120 Vac</b>	<b>240 Vac</b>	<b>240 Vac</b>	<b>480 Vac</b>	
<b>A-101600G</b>	<b>1.5 HP Max</b>	<b>2 HP Max</b>	-	-	<b>Enclosed</b>
<b>A-101892G</b>	-	-	<b>10 HP Max</b>	<b>15 HP Max</b>	<b>Enclosed</b>

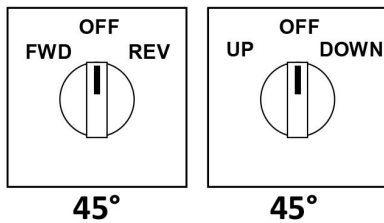
<b>Specification</b>	<b>A-101590G / A-101737G</b>	<b>A-101600G / A-101892G</b>
<b>Certification:</b>	<b>cULus Listed Drum Switch</b>	<b>cULus Listed Drum Switch</b>
<b>Voltage (V):</b>	<b>600V</b>	<b>600V</b>
<b>Current (A):</b>	<b>20A</b>	<b>40A</b>
<b>Single Phase:</b>		
<b>Standard Motor Load 120 Vac</b>	<b>1.5HP Max, 20A</b>	<b>-</b>
<b>Standard Motor Load 240 Vac</b>	<b>2HP Max, 12A</b>	<b>-</b>
<b>Three Phase:</b>		
<b>Standard Motor Load 240 Vac</b>	<b>-</b>	<b>10HP Max, 27A</b>
<b>Standard Motor Load 480 Vac</b>	<b>-</b>	<b>15HP Max, 22A</b>
<b>Wire Range (AWG):</b>	<b>18-10 AWG sol/str</b>	<b>18-10 AWG sol/str</b>
<b>Terminal Screw (M):</b>	<b>M3.5</b>	<b>M3.5</b>
<b>Torque (lb-in):</b>	<b>7.5 lb-in</b>	<b>7.5 lb-in</b>
<b>Contacts:</b>	<b>Double Braking</b>	<b>Double Braking</b>
<b>Operating Angle (°):</b>	<b>45°</b>	<b>45°</b>
<b>Operating Temperature (°C):</b>	<b>-40°C to +85°C</b>	<b>-40°C to +85°C</b>
<b>Storage Temperature (°C):</b>	<b>-40°C to +70°C</b>	<b>-40°C to +70°C</b>
<b>Mechanical Life @ 120 Operations per Hour:</b>	<b>1,000,000 Cycles</b>	<b>1,000,000 Cycles</b>
<b>Electrical Life @ 120 Operations per Hour:</b>	<b>750,00 Cycles</b>	<b>750,00 Cycles</b>

## Single Phase

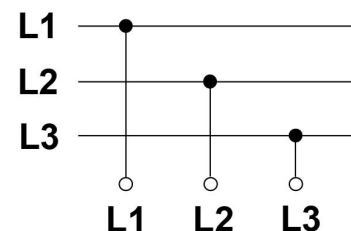
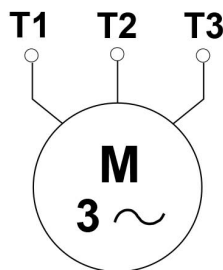
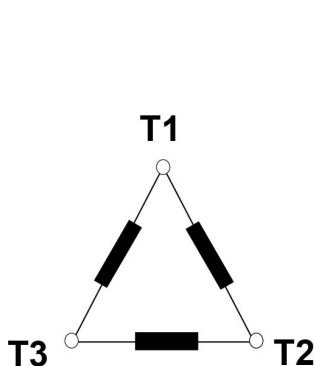
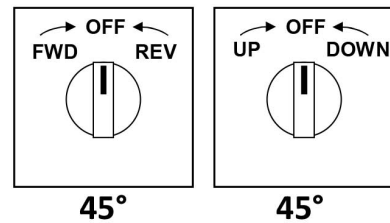


## 3 Phase

### MAINTAINED



### MOMENTARY



## MOTOR REVERSING SWITCH

Dimensions [mm], Drilling Plan and Installation Instructions

