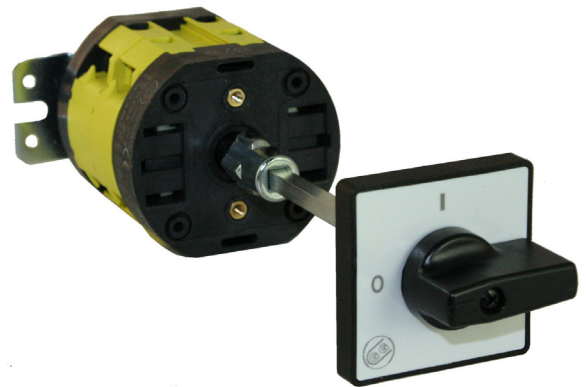


Automation Systems Interconnect (ASI) is the new vendor for Giovenzana in North America. We can supply you with the components you and your customers need.

### New Vendor, Same Great Products

The Giovenzana drum switches, disconnect switches and rear panel mount Cam Switches, from ASI are ideal for industrial control, instrumentation and machinery applications. They feature a double break switch to maintain high pressure for increased contact reliability, gold plating for low power applications and are made from a high impact thermoplastic that carries a UL94V0 flammability rating. Each housing is laser engraved to simplify wire positions and identification. Captive metal parts that feature a screw clamp termination and prevent shock hazard are fully insulated up to the 40 amp models.



DRUM SWITCHES		
Grainger Part #	ASI Replacement	Description
6C013	A-101590G (P0202499S-EKIT)	Motor Reversing Switch - Maintained, Suitable for 1.5 HP Motors at 120Vac or 2 HP at 240 Vac, IP65 Enclosure, Black Handle, Legend Plate, UL508 Listed
6C014	A-101600G (P0202500S-EKIT)	Motor Reversing Switch - Momentary, Suitable for 1.5 HP Motors at 120Vac or 2 HP at 240 Vac, IP65 Enclosure, Black Handle, Legend Plate, UL508 Listed
6C015	A-101737G (C0322518S-EKIT)	Motor Reversing Switch - Maintained, Suitable for 7.5 HP Motors at 208Vac or 20 HP at 480 Vac, IP65 Enclosure, Black Handle, Legend Plate, UL508 Listed
6C016	A-101892G (C0402518S-EKIT)	Motor Reversing Switch - Maintained, Suitable for 7.5 HP Motors at 208Vac or 20 HP at 480 Vac, IP65 Enclosure, Black Handle, Legend Plate, UL508 Listed

PANEL MOUNT DISCONNECT SWITCHES		
Grainger Part #	ASI Replacement	Description
6A615	A-101710G (C0320003B + 095/0001)	Panel Mount Disconnect Switch, 3 Pole, 32 Amp, 600Vac, UL508 Listed, Black Handle, NEMA 1 Rating, Legend Plate, 85mm Shaft & Gasket
6A616	A-101706G (C0320003B + 064/0001)	Panel Mount Disconnect Switch, 3 Pole, 32 Amp, 600Vac, UL508 Listed, NEMA1 Rating, Red Locking Handle w/ Yellow Housing, 85mm Shaft & Gasket
6A617	A-101847G (C0400003B + 095/0001)	Panel Mount Disconnect Switch, 3 Pole, 40 Amp, 600Vac, UL508 Listed, NEMA1 Rating, Black Handle, Legend Plate, 85mm Shaft & Gasket
6A618	A-101844G (C0400003B + 064/0001)	Panel Mount Disconnect Switch, 3 Pole, 40 Amp, 600Vac, UL508 Listed, NEMA 1 Rating, Red Locking Handle w/ Yellow Housing, 85mm Shaft & Gasket
6A619	A-101950G (C0630003B + 220/0001)	Panel Mount Disconnect Switch, 3 Pole, 63 Amp, 600Vac, UL508 Listed, NEMA1 Rating, Black Handle, Legend Plate, 100mm Shaft & Gasket
6A620	A-101946G (C0630003B + 212/0001)	Panel Mount Disconnect Switch, 3 Pole, 63 Amp, 600Vac, UL508 Listed, NEMA1 Rating, Red Locking Handle, Legend Plate, 100mm Shaft & Gasket
6A621	A-102042G (C0800003B + 220/0001)	Panel Mount Disconnect Switch, 3 Pole, 85 Amp, 600Vac, UL508 Listed, NEMA1 Rating, Black Handle, Legend Plate, 100mm Shaft & Gasket
6A622	A-102040G (C0800003B + 212/0001)	Panel Mount Disconnect Switch, 3 Pole, 85 Amp, 600Vac, UL508 Listed, NEMA1 rating, Red Locking Handle w/ Yellow Housing, Legend Plate, 100mm Shaft & Gasket

OFF/ ON CAM SWITCH		
Grainger Part #	ASI Replacement	Description
6A611	A-101470G (P0200002R + 001/0001-1)	ON-OFF Cam Switch, 2 Pole, 20A, 600Vac, Rear Panel Mount, Suitable for 1.5 HP Motors at 120Vac or 2 HP Motors at 240 Vac, UL508 Listed and Black Handle, Legend Plate
6A612	A-101490G (P0200003R + 001/0001-1)	ON-OFF Cam Switch, 3 Pole, 20 A, 600Vac, Rear Panel Mount, Suitable for 5 HP Motors at 240Vac to 10 HP at 600Vac, UL508 Listed, Black Handle, Legend Plate
6A613	A-101832G (C0400002R + 007/0001-1)	ON-OFF Cam Switch, 2 Pole, 40A, 600Vac, Rear Panel Mount, Suitable for 3 HP Motors at 120Vac or 5 HP Motors at 240 Vac, UL508 Listed, Black Handle, Legend Plate
6A614	A-101848G (C0400003R + 007/0001-1)	ON-OFF Cam Switch, 3 Pole, 40 A, 600Vac, Rear Panel Mount, Suitable for 10 HP Motors at 240Vac to 20 HP at 600Vac, UL508 Listed, Black Handle, Legend Plate

