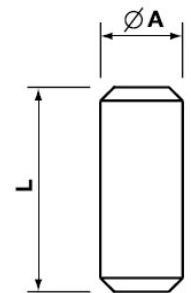


### MULTI-ENTRY SEAL PLUGS - POLYAMIDE PA6.6



#### Multi-entry seal plugs

Ref.	Suitable for Seal	Ø A (mm)	L (mm)	Quantity Box/Bag
TGM38	36A3M1623	3	8	5.000/100
TGM48	36A3M1624 + 36A3M2034 + 36A3M2554	4	8	5.000/100
TGM58	36A3M2025	5	8	5.000/100
TGM513	36A3M2545	5	13	2.500/50
TGM613	36A3M2526 + 36A3M2536 + 36A3M40106	6	13	2.000/50
TGM713	36A3M2537	7	13	2.000/50
TGM817	36A3M3248 + 36A3M5088 + 36A3M4078	8	17	100



#### Application:

Plugging unused entries in multi-entry seals and maintaining IP68.

#### Technical details:

PROTECTION :	IP 68 (EN 60529:1991 / CEI 70-1)
MATERIAL :	POLYAMIDE PA6.6
SELF-EXTINGUISHING CLASS :	V-2 (UL 94)
TEMPERATURE RANGE :	-20°C ÷ +90°C (continuous)
COLOUR:	grey RAL 7035
RESISTANCE TO CHEMICALS:	See Annexe A
(R=Resistant; LR= Low Resistance; NR= Not Resistant)	

### MULTI-ENTRY SEAL PLUGS - POLYAMIDE PA6.6

#### Annexe A:

Chemical agent	Level of resistance				Note
	Resistant	Limited resistance	Not resistant	Soluble	
Acetaldehyde					Swelling
Acetylene					
Acetone					
Acetic Acid, 30% solution					
Acetic Acid, 5% solution					
Acrylic Acid					
Butyric Acid, aqueous					
Butyric Acid, concentrated					
Citric Acid					
Hydrochloric Acid					
Hydrochloric Acid, concentrated					
Hydrochloric Acid, 40% solution					
Hydrochloric Acid, 1% aqueous solution					
Formic Acid, 10% acid solution					
Formic Acid, 85% acid solution					
Phosphoric Acid, 10% aqueous solution					
Phosphoric Acid, 30 % aqueous solution					
Hydriodic Acid					
Lactic Acid					
Nitric Acid, 1% aqueous solution					
Nitric Acid, 50% aqueous solution					
Oleic Acid (commercial)					
Oxalic Acid, 10% aqueous solution					
Perchloric Acid					
Hydrogen Sulfide					
Hydrogen Sulfide, 10% aqueous solution					
Hydrogen Sulfide, 30% aqueous solution					
Hydrogen Sulfide, 98% aqueous solution					Solvent
Sulfurous Acid					
Tartaric Acid					
Trichloro Acetic Acid					
Water					
Sea Water					
Hydrogen Peroxide, 10 % aqueous solution					Oxidising agent
Allyl Alcohol					
Benzyl Alcohol					
Ethyl Alcohol, concentrated					Swelling
Methyl Alcohol					
Propylic Alcohol					Swelling
Alcohols of fatty acid					
Cinnamic Aldehyde					
Furan Aldehyde					
Zinc Halide, aqueous solution					
Liquid Ammonia					
Carbon Dioxide					
Sulfurous Anhydride					

### MULTI-ENTRY SEAL PLUGS - POLYAMIDE PA6.6

#### Annexe A:

Aniline		Yellow			
Nitrogen	Blue				
Photographic fixing bath	Blue				
Ground bacteria (anaerobic)	Blue				
Benzaldehyde			Red		
Benzene	Blue				
Petrol super grade	Blue				
Beer	Blue				
Bitumen	Blue				
Bromine			Red		
Butanol	Blue				
Caprolactam, melted at 75 °C		Yellow			
Potassium Carbonate, saturated solution	Blue				
Zinc Carbonate	Blue				
CFC	Blue				
Ketone	Blue				
Cyclohexane	Blue				
Cyclohexanone	Blue				
Chloral Hydrate				Green	Solvent
Chloramine			Red		
Sodium Chloride, aqueaous solution			Red		Oxidising agent
Chlorobenzene	Blue				
Chloroform		Yellow			
Calcium Chloride, alcohol solution				Green	
Calcium Chloride, aqueous solution	Blue				
Iron Chloride, aqueous acid		Yellow			
Iron Chloride, neutral, aqueous	Blue				
Potassium Chloride, 10% aqueous solution	Blue				
Sodium Chloride, saturated solution	Blue				
Thionyl Chloride			Red		
Vinyl Chloride		Yellow			
Fuel for petrol engine	Blue				
Creosol				Green	Solvent
Dibutyl Phthalate	Blue				
Potassium Dichromate		Yellow			
Diethylene-Glycol		Yellow			
Dimethylamine	Blue				
Dimethylformamide		Yellow		Green	Solvent at high temperature
Dimethyl Sulfoxide		Yellow		Green	Solvent at high temperature
Dioxane	Blue				
Disinfectant with active chlorine			Red		Oxidizing agent
Carbon Disulfide	Blue				
E 8705	Blue				
Heptane	Blue				
Benzene Hexachloride	Blue				
Hexane	Blue				
Ethane	Blue				
Ether	Blue				
Diethyl Ether	Blue				
Ethyl Acetate	Blue				
Ethylene	Blue				

### MULTI-ENTRY SEAL PLUGS - POLYAMIDE PA6.6

#### Annexe A:

Phenol				Solvent
Fertilizers	Blue			
Fluorine			Red	
Brazing flux			Red	Contains: Zinc Halide
Formaldehyde, 10% aqueous solution		Yellow		
Formamide		Yellow		See: Dimethylformamide
Phosphate	Blue			
Phthalates	Blue			Plasticiser
Butane gas	Blue			
Chlorine gas			Red	Oxidising agent
Inert gases	Blue			
Lighting gas	Blue			
Diesel fuel for trucks	Blue			
Gel	Blue			
Glycerine	Blue			
Ethylene Glycol		Yellow		Green
Ethylene Glycol		Yellow		Green
Grease, wax	Blue			
Cattle fat	Blue			
Hydrogen	Blue			
Calcium Hydroxide, aqueous solution	Blue			
Potassium Hydroxide, concentrated & in solution		Yellow		
Ink	Blue			Verify colour absorption
Calcium Hypochlorite			Red	
Sodium Hypochlorite			Red	Oxidising agent
Isooctane	Blue			
Isopropanol (Isopropyl alcohol)	Blue			Swelling
Methane	Blue			
Mould	Blue			
Ammonium Nitrate, saturated solution	Blue			
Silver Nitrate, aqueous solution	Blue			
Hydraulic oil	Blue			Tests must be performed in operating temperature conditions
Lubricating oil	Blue			
Mineral oil	Blue			
Gearbox oil	Blue			
Fuel oil	Blue			
Citrus oil	Blue			
Camphor oil	Blue			
Colza oil (Rape seed oil)	Blue			
Linseed oil	Blue			
Fish oil	Blue			
Turpentine oil	Blue			
Motor oil	Blue			
Brake fluid	Blue			
Ethylene Oxide	Blue			

### MULTI-ENTRY SEAL PLUGS - POLYAMIDE PA6.6

#### Annexe A:

Oxygen					At 3 bar
Ozone, 20 ppm					Oxidising agent
Paraffin					
Potassium Perchlorate , 2% aqueous solution					Oxidising agent
Potassium Permanganate, 10% aqueous solution					Oxidising agent
Petroleum					
Natural Petroleum Gas					
Propane					
Cellulose covering					
Blood					
Silicon fluid					
Caustic soda, 10% aqueous solution					
Caustic soda, concentrated aqueous solution					See: Potassium Hydroxide , solution
Soda, aqueous solution					
Soda, saturated solution					
Sodium Trisulfate, solution 200g/l					
Ammonium Sulfate, saturated solution					
Copper Sulfate, saturated solution					
Sodium Sulfide, saturated solution					
Agfa processing solution					
Photographic processing solution					
Sweet solution pH 4.5					
Sweet solution pH 9.5					
Solvent for dry wash with boiling point between 100-140 °C					
Styrene					
Fruit juice					
Carbon Tetrachloride					
Carbon Tetrafluoride					
Tincture of Iodine (commercial)					
Toluene					
Trichloroethylene					
Triethanolamine					
Urea, 20% aqueous solution					
Urine					
Water vapour					
Xylene					
Sugar, saturated solution					