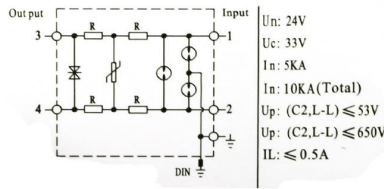
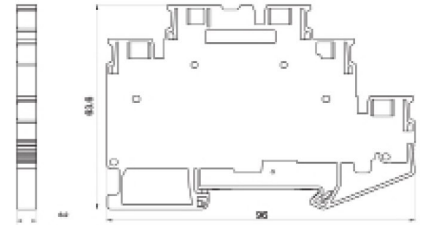


Features:

- Multi Stage, 3 Level Protection Circuit
- Protects 0-10V, 0-20mA, and 4-20mA Analog Control Circuits
- High Density, Space Saving Design, 6.2mm
- Quick, Secure DIN Rail Mounting
- EZ Wire, Push In Spring Clamp Connections
- Up to 10kA Max Surge Current
- Optional Labels for Wiring & Top of Housing



Circuit Diagram



Dimensions: 96 x 63.6 x 6.2mm

Technical Data	ASIUTJP-2JD-24
Nominal Voltage	24V
Rated Voltage (Max Continuous) DC Voltage	33V
Rated Voltage (Max Continuous) AC Voltage	23V
Lightning Impulse Current 10/350μS	500A/Line
Nominal Current	500mA
Nominal Discharge Current In 8/20μS Line-Line	5kA/5kA
Max Discharge Current I _{max} 8/20μS Total	10kA
Output Voltage Limit 1000V/μS Line-Line	≤45V/≤650V
Output Residual Voltage 8/20μS Line-Line	≤53V/≤650V
Response Time	≤1ns/≤100ns
Series Impedance (Per Line)	4Ω±10%
Operating Temperature Range	-40°C ~ +80°C
Wire	24-12 AWG (0.2-2.5mm)
Can be installed on the TH35 rails	TH35-7.5 TH35-15
Housing Material	PA66
Protection Class	IP20
Approvals	UL497B Listed /File E519102
Test Standard	GB/T18802.21-2004 IEC 61643-21:2000