

ASIUK1.5N

Terminal block
UKJ-1.5



UL US CE CCC ENEC RoHS

ASIUK3N

Terminal block
UKJ-2.5



UL US CE CCC ENEC RoHS

ASIUK2.5N

Terminal block
UKJ-2.5N

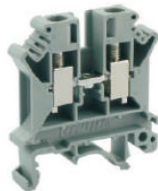


UL US CE CCC ENEC RoHS

Dimensions		Type		Order no.		Type		Order no.		Type		Order no.	
Width/Thickness/Height	(mm)	42.5 / 4.2 / 40.5				42.5 / 5.2 / 46.5				42.5 / 5.2 / 40.5			
Screw thread	(mm)	M2				M3				M3			
Tightening torque	(Nm)	0.22-0.25				0.6-0.8				0.6-0.8			
Stripping length	(mm)	7				8				8			
Technical data													
Voltage	(V)	500				800				800			
Max. operating current	(A)	17.5				32				24			
Cross section	(mm ²)	1.5				4				2.5			
Connection capacity													
Solid conductors	(mm ²)	0.14-1.5				0.2-4				0.2-4			
Stranded conductors	(mm ²)	0.14-1.5				0.2-2.5				0.2-2.5			
Terminal block													
		UKJ-1.5		011032		UKJ-2.5		011001		UKJ-2.5N		011067	
BU: Blue		UKJ-1.5 (BU)		011125		UKJ-2.5 (BU)		011101		UKJ-2.5N (BU)		011149	
Mounting rail													
Can be installed on the rails both  and 		TH35-7.5 TH35-15 G32-15 G32-18		102001 102005 102002 102003		TH35-7.5 TH35-15 G32-15 G32-18		102001 102005 102002 102003		TH35-7.5 TH35-15 G32-15 G32-18		102001 102005 102002 102003	
End cover													
For electrical isolation in the end of terminal blocks.		UKJ-2.5XG		012012		UKJ-G (DUK)		012001		UKJ-2.5XG		012012	
BU: Blue		UKJ-2.5XG (BU)		012071		UKJ-G (DUK) BU		012072		UKJ-2.5XG (BU)		012071	
Partition plate													
For visual and electrical isolation of the terminal groups.		UKJ-G (ATP-UK)		012002		UKJ-G (ATP-UK)		012002		UKJ-G (ATP-UK)		012002	
Separating disk													
For separation of neighboring bridges, can be fitted later, no loss of pitch.						UKJ-G (TS-K)		012003		UKJ-GP		012007	
Test accessories													
Test socket						PSB3		016101		PSB3		016101	
Test plug		For test connect 				PS-2.3		Please refer to the attachment for the ordering data.		PS-2.3		Please refer to the attachment for the ordering data.	
Fixed bridge													
For cross connection in the terminal center.		2-pos. UFBI 2-4		013060		UFBI 2-5		013071		UFBI 2-5		013071	
Screw heads with insulation collar or without.		3-pos. UFBI 3-4		013134		UFBI 3-5		013070		UFBI 3-5		013070	
N: With insulation collar		4-pos. UFBI 4-4		013135		UFBI 4-5		013140		UFBI 4-5		013140	
		10-pos. UFBI 10-4		013025		UFBI 10-5		013001		UFBI 10-5		013001	
						UFBI 2-5N		013141		UFBI 2-5N		013141	
						UFBI 3-5N		013142		UFBI 3-5N		013142	
						UFBI 4-5N		013143		UFBI 4-5N		013143	
						UFBI 10-5N		013052		UFBI 10-5N		013052	
Insertion bridge													
For the connection points with conductors, makes level bridge possible.		2-pos. UEB 2-5		013018		UEB 2-5		013018		UEB 2-5		013018	
		3-pos. UEB 3-5		013026		UEB 3-5		013026		UEB 3-5		013026	
		10-pos. UEB 10-5		013012		UEB 10-5		013012		UEB 10-5		013012	
Isolator bridge bar													
A jumping bridge can be made. 													
Marker strip													
Horizontally/Vertically		Blank		UZB 4-10(Blank)		014013		UZB 5-10(Blank)		014001		UZB 5-10(Blank)	
Can be printed 1-600, or the technical data according to your requirements.		Horizontally		UZB 4-10 (Horizontally)		014014		UZB 5-10 (Horizontally)		014005		UZB 5-10 (Horizontally)	
		Vertically		UZB 4-10 (Vertically)		014015		UZB 5-10 (Vertically)		014006		UZB 5-10 (Vertically)	
Switching jumper for 2 terminal blocks													
Warning label 		UKJ-1.5J		012035		UKJ-2.5J		012036		UKJ-2.5J		012036	
Screwdriver 		YB 0.4 x 2.5		304001		YB 0.6 x 3.5		304002		YB 0.6 x 3.5		304002	

ASIUK5N

Terminal block
UKJ-4



UL US CE CCC RoHS

ASIUK6N

Terminal block
UKJ-6



UL US CE CCC RoHS

ASIUK10N

Terminal block
UKJ-10



UL US CE CCC RoHS

Dimensions		ASIUK5N		ASIUK6N		ASIUK10N	
Width/Thickness/Height	(mm)	42.5 / 6.2 / 46.5		42.5 / 8.2 / 46.5		42.5 / 10.2 / 46.5	
Screw thread	(mm)	M3		M4		M4	
Tightening torque	(Nm)	0.6-0.8		1.5-1.8		1.5-1.8	
Stripping length	(mm)	8		10		10	
Technical data		ASIUK5N		ASIUK6N		ASIUK10N	
Voltage	(V)	800		800		800	
Max. operating current	(A)	41		57		76	
Cross section	(mm ²)	6		10		16	
Connection capacity		ASIUK5N		ASIUK6N		ASIUK10N	
Solid conductors	(mm ²)	0.2-6		0.2-10		0.5-16	
Stranded conductors	(mm ²)	0.2-4		0.2-6		0.5-10	
Terminal block	Type	Order no.	Type	Order no.	Type	Order no.	
	UKJ-4	011002	UKJ-6	011003	UKJ-10	011004	
BU:Blue	UKJ-4 (BU)	011102	UKJ-6 (BU)	011103	UKJ-10 (BU)	011104	
Mounting rail	Can be installed on the rails both and						
	TH35-7.5	102001	TH35-7.5	102001	TH35-7.5	102001	
	TH35-15	102005	TH35-15	102005	TH35-15	102005	
	G32-15	102002	G32-15	102002	G32-15	102002	
	G32-18	102003	G32-18	102003	G32-18	102003	
End cover	For electrical isolation in the end of terminal blocks.						
	UKJ-G (DUK)	012001	UKJ-G (DUK)	012001	UKJ-G (DUK)	012001	
BU: Blue	UKJ-G (DUK) BU	012072	UKJ-G (DUK) BU	012072	UKJ-G (DUK) BU	012072	
Partition plate	For visual and electrical isolation of the terminal groups.						
	UKJ-G (ATP-UK)	012002	UKJ-G (ATP-UK)	012002	UKJ-G (ATP-UK)	012002	
Separating disk	For separation of neighboring bridges, can be fitted later, no loss of pitch.						
	UKJ-G (TS-K)	012003	UKJ-G (TS-K)	012003	UKJ-G (TS-K)	012003	
Test accessories							
Test socket	For test connect.	PSB3	016101	PSB4	016103	PSB4	016103
Test plug		PS-2.3	Please refer to the attachment for the ordering data.	PS-4	Please refer to the attachment for the ordering data.	PS-4	Please refer to the attachment for the ordering data.
Fixed bridge	For cross connection in the terminal center. Screw heads with insulation collar or without.						
	2-pos.	UFBI 2-6	013072	UFBI 2-8	013074	UFBI 2-10	013076
	3-pos.	UFBI 3-6	013073	UFBI 3-8	013075	UFBI 3-10	013077
	4-pos.	UFBI 4-6	013078	UFBI 4-8	013144	UFBI 4-10	013148
	10-pos.	UFBI 10-6	013002	UFBI 10-8	013003	UFBI 10-10	013004
N:With insulation collar	2-pos.	UFBI 2-6N	013064	UFBI 2-8N	013145	UFBI 2-10N	013149
	3-pos.	UFBI 3-6N	013065	UFBI 3-8N	013146	UFBI 3-10N	013150
	4-pos.	UFBI 4-6N	013066	UFBI 4-8N	013147	UFBI 4-10N	013151
	10-pos.	UFBI 10-6N	013047	UFBI 10-8N	013048	UFBI 10-10N	013049
Insertion bridge	For the connection points with conductors, makes level bridge possible.						
	2-pos.	UEB 2-6	013019	UEB 2-8	013020	UEB 2-10	013021
	3-pos.	UEB 3-6	013027	UEB 3-8	013024	UEB 3-10	013028
	10-pos.	UEB 10-6	013013	UEB 10-8	013014	UEB 10-10	013015
Isolator bridge bar	A jumping bridge can be made.						
		UISSBI 10-6	013189	UISSBI 10-8	013159	UISSBI 10-10	013160
Marker strip	Horizontally/Vertically						
Blank		UZB 6-10(Blank)	014002	UZB 8-10(Blank)	014003	UZB 10-10(Blank)	014004
Can be printed 1-600, or the technical data according to your requirements.	Horizontally	UZB 6-10(Horizontally)	014007	UZB 8-10(Horizontally)	014009	UZB 10-10(Horizontally)	014011
	Vertically	UZB 6-10(Vertically)	014008	UZB 8-10(Vertically)	014010	UZB 10-10(Vertically)	014012
Switching jumper for 2 terminal blocks			UKQ 2-8		013102		
Warning label			UKJ-4J		012037		
		UKJ-6J	012038	UKJ-10J	012039		
Screwdriver			YB 0.6×3.5		304002		
		YB 1.0×4.0	304002		YB 1.0×4.0		