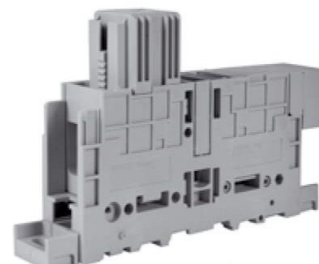


GPM Series high current terminal blocks

- mounting for both PR/DIN and PR/3 rails which meet IEC 60715 norms, "G32" and TH/35 types
- nominal voltage 1000 V
- panel mount version - M6 screws (recommended with screwdriver and washer slot)
- possibility of parallel cross connection
- available in beige and grey
- **CESI 13 ATEX 038U** certificate
I M2 Ex e I Mb
II 2G Ex e IIC Gb temperature range of use
-40 – +80°C
- **CoC IEC Ex CES 13.0012U**
- maximum continual operating temperature 100°C



standard version



panel-mount version

standard version	GPM.95/BC Cat. No. GP200	GPM.150/BC Cat. No. GP500	GPM.240/BC Cat. No. GP800
grey version	GPM.95/BC/GR Cat. No. GP200GR	GPM.150/BC/GR Cat. No. GP500GR	GPM.240/BC/GR Cat. No. GP800GR
panel-mount version	GPM.95/BC/FIX Cat. No. GP210	GPM.150/BC/FIX Cat. No. GP510	GPM.150/BC/FIX Cat. No. GP810
panel-mount version	GPM.95/BC/FIX/GR Cat. No. GP210GR	GPM.150/BC/FIX/GR Cat. No. GP510GR	GPM.240/BC/FIX/GR Cat. No. GP810GR

TECHNICAL CHARACTERISTICS			
function/type	feed-through	feed-through	feed-through
rated cross-section (mm ²)	95/150	150/240	240/300
connecting capacity			
flexible (mm ²)	35 ÷ 95	50 ÷ 150	95 ÷ 240
rigid (mm ²)	25 ÷ 120	35 ÷ 185	50 ÷ 300
bars and/or cable lugs	22 mm maximum width (M8 bolt)	32 mm maximum width (M10 bolt)	40 mm maximum width (M12 bolt)
rated voltage / rated current / gauge conf. to IEC 60947-7-1	1000 V / 232 A / B12	1000 V / 309 A / B14	1000 V / 415 A / B16
rated voltage / rated current / AWG UL	-	-	-
(Ex e) rated voltage / rated current	630 V / 232 A (*1000 V with DFU/4)	1000 V / 309 A	1000 V / 415 A
maximum current	320A	440A	600A
rated impulse withstand voltage / pollution degree	12 KV / 3	12 KV / 3	12 KV / 3
insulation stripping length (mm)	35	35	43
tightening torque value - bar (test / recommended) (Nm)	6 / 9 (13 mm wrench)	10 / 15 (key 17 mm)	14 / 21 (key 19 mm)
tightening torque value - cable (test / recommended) (Nm)	6 / 9 (Allen screw, 6 mm wrench)	10 / 15 (Allen screw, 8 mm wrench)	14 / 21 (Allen screw, 8 mm wrench)
height / width / thickness TH/35 7.5 mm	113 / 158 / 32	134 / 170 / 42	150 / 202 / 52
height / width / thickness TH/35 15 mm	120 / 158 / 32	141 / 170 / 42	157 / 202 / 52
height / width / thickness G32	117 / 158 / 32	138 / 170 / 42	154 / 202 / 52
height / width (fixing distance between centres) / thickness (panel mount)	108 / 175 (158) / 32	129 / 187 (158) / 42	144 / 219 (172) / 52

APPROVALS			

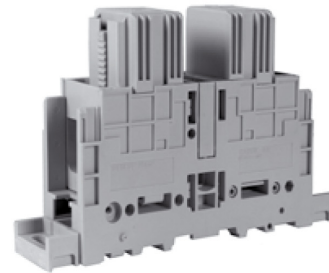
ACCESSORIES			
End sections	beige	-	-
Permanent cross connection			
POF/95/2 poles	P0952	PFX/150/2 poles	PX152
POF/95/3 poles	P0953	PFX/150/3 poles	PX153
Switchable cross connection			
Multiple common bar	250 mm	-	-
Shunting screw and sleeve		-	-
Coloured partition	red, green, white	-	-
Cross connection barrier	red	-	-
Test plug socket		-	-
Test plug		-	-
Numbering strip		-	-
Cover for cross-connection		-	-
Mounting rail support	flat for PR/DIN and PR/3 sloped for PR/DIN and PR/3	ACI121213 Z121213 ACI121024 Z121024	ACI121213 Z121213 ACI121024 Z121024
Marking tag	printed or blank	CNU/8/51 NU0851	CNU/8/51 NU0851
End bracket		BTU for PR/DIN and PR/3 BT005 CDA/BT for PR/DIN only CD003 BT/3-BTO for PR/3 only BT003-BT007	BTU for PR/DIN and PR/3 BT005 CDA/BT for PR/DIN only CD003 BT/3-BTO for PR/3 only BT003-BT007

GPM Series high current terminal blocks

- mounting for both PR/DIN and PR/3 rails which meet IEC 60715 norms, "G32" and TH/35 types
- nominal voltage 1000 V
- panel mount version - M6 screws (recommended with screwdriver and washer slot)
- possibility of parallel cross connection
- available in beige RAL 1001
- **CESI 13 ATEX 038U** certificate
I M2 Ex e I Mb
II 2G Ex e IIC Gb temperature range of use
-40 – +80°C
- **CoC IEC Ex CES 13.0012U**
- maximum continual operating temperature 100°C



standard version



panel-mount version

standard version	GPM.95/CC Cat. No. GP300	GPM.150/CC Cat. No. GP600	GPM.240/CC Cat. No. GP900
grey version	GPM.95/CC/GR Cat. No. GP300GR	GPM.150/CC/GR Cat. No. GP600GR	GPM.240/CC/GR Cat. No. GP900GR
panel-mount version	GPM.95/CC/FIX Cat. No. GP310	GPM.150/CC/FIX Cat. No. GP610	GPM.240/CC/FIX Cat. No. GP910
panel-mount version	GPM.95/CC/FIX/GR Cat. No. GP310GR	GPM.150/CC/FIX/GR Cat. No. GP610GR	GPM.240/CC/FIX/GR Cat. No. GP910GR

TECHNICAL CHARACTERISTICS

function/type	feed-through	feed-through	feed-through
rated cross-section (mm²)	95	150	240
connecting capacity			
flexible (mm²)	35 – 120	50 – 185	95 – 300
rigid (mm²)	25 – 120	35 – 185	95 – 300
bars and/or cable lugs	22 mm maximum width (M8 bolt)	32 mm maximum width (M10 bolt)	40 mm maximum width (M12 bolt)
rated voltage / rated current / gauge	1000 V / 232 A / B12	1000 V / 309 A / B14	1000 V / 415 A / B16
rated voltage / rated current / AWG	-	-	-
maximum current	320A	440A	600A
rated impulse withstand voltage / pollution degree	12 KV / 3	12 KV / 3	12 KV / 3
insulation stripping length (mm)	-	-	-
tightening torque value - bar (test / recommended) (Nm)	-	-	-
tightening torque value - cable (test / recommended) (Nm)	6 / 9 (Allen screw, 6 mm wrench)	10 / 15 (Allen screw, 8 mm wrench)	14 / 21 (Allen screw, 8 mm wrench)
height / width / thickness	TH/35 7.5 mm	134 / 140 / 42	150 / 154 / 52
height / width / thickness	TH/35 15 mm	141 / 140 / 42	157 / 154 / 52
height / width / thickness	G32	138 / 140 / 42	154 / 154 / 52
height / width (fixing distance between centres) / thickness (panel mount)	108 / 173 (158) / 32	129 / 173 (158) / 42	144 / 187 (172) / 52

APPROVALS



ACCESSORIES	Type	Cat. No.	Type	Cat. No.	Type	Cat. No.
End sections	-	-	-	-	-	-
Permanent cross connection	-	-	-	-	-	-
Switchable cross connection	-	-	-	-	-	-
Multiple common bar	250 mm	-	-	-	-	-
Shunting screw and sleeve	-	-	-	-	-	-
Coloured partition	red, green, white	-	-	-	-	-
Cross connection barrier	red	-	-	-	-	-
Test plug socket	-	-	-	-	-	-
Test plug	-	-	-	-	-	-
Numbering strip	-	-	-	-	-	-
Cover for cross-connection	-	-	-	-	-	-
Mounting rail support	flat for PR/DIN and PR/3 sloped for PR/DIN and PR/3	ACI121213 Z121213 ACI121024 Z121024	ACI121213 Z121213 ACI121024 Z121024	ACI121213 Z121213 ACI121024 Z121024	ACI121213 Z121213 ACI121024 Z121024	ACI121213 Z121213 ACI121024 Z121024
Marking tag	printed or blank	CNU/8/51 NU0851	CNU/8/51 NU0851	CNU/8/51 NU0851	CNU/8/51 NU0851	CNU/8/51 NU0851
End bracket	-	BTU for PR/DIN and PR/3 BT005 CDA/BT for PR/DIN only CD003 BT/3-BTO for PR/3 only BT003-BT007	BTU for PR/DIN and PR/3 BT005 CDA/BT for PR/DIN only CD003 BT/3-BTO for PR/3 only BT003-BT007	BTU for PR/DIN and PR/3 BT005 CDA/BT for PR/DIN only CD003 BT/3-BTO for PR/3 only BT003-BT007	BTU for PR/DIN and PR/3 BT005 CDA/BT for PR/DIN only CD003 BT/3-BTO for PR/3 only BT003-BT007	BTU for PR/DIN and PR/3 BT005 CDA/BT for PR/DIN only CD003 BT/3-BTO for PR/3 only BT003-BT007