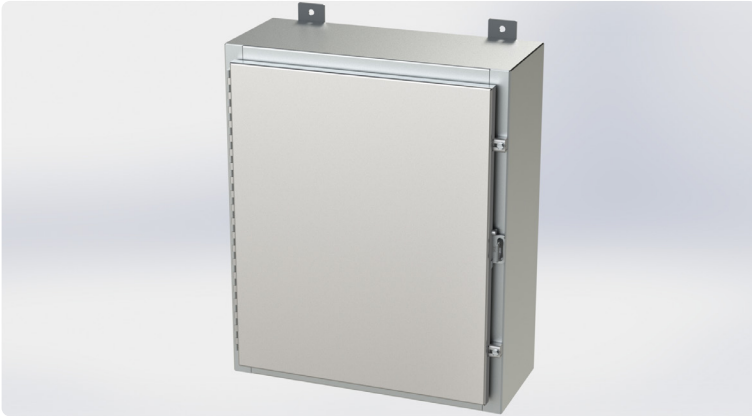


### SCE-24H2008SSLP



### Product Specifications:

**Part Number:** SCE-24H2008SSLP  
**Description:** Nema 4X LP Enclosure  
**Height:** 24.00"  
**Width:** 20.00"  
**Depth:** 8.00"  
**Est. Ship Weight:** 44.00 lbs

#### Construction

- ✿ 0.075 In. stainless steel Type 304.
- ✿ Continuously welded seams ground smooth.
- ✿ Flange trough collar around all sides of door opening.
- ✿ Oil-resistant door gasket.
- ✿ Collar studs provided for mounting optional subpanels.
- ✿ Hasp and staple for padlocking.
- ✿ Stainless steel continuous hinge.
- ✿ Removable print pocket furnished if height and width of enclosure is greater than 12 Inches.
- ✿ Ground stud on door.
- ✿ Stainless steel clamps on three sides door when greater than 30 inch wide.
- ✿ Mounting provision top and bottom of back.

#### Application

Designed to house electrical and electronic controls, instruments and components in areas which may be regularly hosed down or are very wet conditions. Provides protection from dust, dirt, oil and water. For outdoor applicationS a drip shield is recommended. For outdoor application a drip shield and drain vent is recommended.

For details about the design, performance expectations, applications and design suggestions - See Design Considerations  
[www.saginawcontrol.com/instman/considerations.pdf](http://www.saginawcontrol.com/instman/considerations.pdf)

#### Finish

#4 brushed finish on all exterior surfaces. Optional sub-panels are powder coated white.

#### Industry Standards - (IS6)

- ✿ NEMA Type 3R, 4, 4X, 12 and Type 13
- ✿ UL Listed Type 3R, 4, 4X and 12
- ✿ CSA Type 4, 4X and 12
- ✿ IEC 60529
- ✿ IP 66

#### Notes

Provision for Lifting Lugs on enclosures when Height >48" and Depth >16". The Lifting Lug assembly will be included with the enclosure bolt pack.

#### Optional Accessories

- SCE-24P20 Subpanel, Bent
- SCE-24P20GALV Subpanel, Bent Galvannealed
- SCE-BVK Breather Vent
- SCE-DS20SS Shield, S.S. Drip
- SCE-LPCLAMPSS Assembly, S.S. LP Clamp
- SCE-LPQR LP Style Quick Release Clamp Assy (Stainless)
- SCE-NADFKSS Kit, S.S. Swing-Out Panel Mounting
- SCE-RD24H20SS Door, Replacement

#### Similar Part Numbers

- SCE-16H1206SSLP Nema 4X LP Enclosure
- SCE-16H1208SSLP Nema 4X LP Enclosure
- SCE-16H1606SSLP Nema 4X LP Enclosure
- SCE-16H2006SSLP Nema 4X LP Enclosure
- SCE-20H1606SSLP Nema 4X LP Enclosure
- SCE-20H1608SSLP Nema 4X LP Enclosure
- SCE-20H1610SSLP Nema 4X LP Enclosure
- SCE-20H2006SSLP Nema 4X LP Enclosure
- SCE-20H2408SSLP Nema 4X LP Enclosure
- SCE-24H1608SSLP Nema 4X LP Enclosure

#### Installation Information

- ✿ Drip Shield Kit Assembly
- ✿ Swing Panel Assembly for LP Enclosures
- ✿ Clamp Fastened Single Door Enclosures (Stainless Steel)
- ✿ NEMA 12 and 4 Clamp Fastened Single Door Enclosure