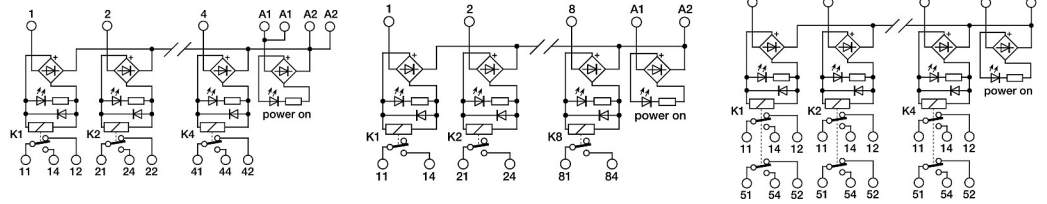


Super Compact 24 Vac/dc Relay Modules Fixed or Pluggable Relays

- Not-pluggable relay
- AC/DC input voltage
- Fast cabling with pluggable terminal blocks
- Allow PNP and NPN command
- Extremely compact dimensions

NOTE

Manufacturer and model of the relay is not binding, technical data are to be considered typical



CODE TYPE	XCR41	XCR81	XCR42SC
INPUT TECHNICAL DATA			
Input rated voltage	24 Vac/dc ±10%	24 Vac/dc ±10%	24 Vac/dc ±10%
Pull indrop out voltage type	16.8 V / 2.4 V	16.8 V / 2.4 V	33.6 V / 4.8 V
Current consumption	16 mA ±10%	16 mA ±10%	20 mA ±10%
Turn ON OFF time	7 ms / 3 ms	7 ms / 3 ms	10 ms / 15 ms
Frequency	—	—	—
Protection circuit	Free-wheel diode, Reverse polarity	Free-wheel diode, Reverse polarity	Free-wheel diode, Reverse polarity
Connection type	2.5 mm ² screw type pluggable	2.5 mm ² screw type pluggable	2.5 mm ² screw type pluggable
Input channels	4 not pluggable	8 not pluggable	4 not pluggable
OUTPUT TECHNICAL DATA			
Contact type	SPDT, 1 form C, AgNi	SPST(NO), 1 Form A (NO), AgSnO ₂	DPDT, 2 form C, AgNi
Output voltage	—	—	—
Nominal current	8 A [240 Vac]	8 A [240 Vac]	8 A [250 Vac]
Max current	8 A	8 A	8 A
Leakage current with signal 0	—	—	—
Min applicable load	—	—	—
Max fuse current	—	—	—
Connection type	2.5 mm ² [AWG26-14], screw type pluggable	2.5 mm ² [AWG26-14], screw type pluggable	2.5 mm ² [AWG26-14], screw type pluggable
Protection circuit device	—	—	—
GENERAL TECHNICAL DATA			
Operating temperature range	-20...+70°C	-20...+70°C	-20...+60°C
Input output isolation	2.5 kVac / 60 s	2.5 kVac / 60 s	2.5 kVac / 60 s
Protection degree	IP 20	IP 20	IP 20
Reference Standards	—	—	—
Overtoltage category pollution degree	II / 2	II / 2	II / 2
Status indication	LED "DC OK" / LED "Relay"	LED "DC OK" / LED "Relay"	LED "DC OK" / LED "Relay"
Housing material	UL94V-0 plastic material	UL94V-0 plastic material	UL94V-0 plastic material
Dimensions	119x108x22.5 mm	119x108x22.5 mm	119x108x22.5 mm
Approximate weight	143 g	199 g	137 g
Mounting information	on a rail, side by side	on a rail, side by side	on a rail, side by side
APPROVALS	CE	CE	CE
ACCESSORIES			
Mounting rail IEC60715 TH35 75	PR/3/AC, PR/3/AC/ZB, PR/3/AS, PR/3/AS/ZB	PR/3/AC, PR/3/AC/ZB, PR/3/AS, PR/3/AS/ZB	PR/3/AC, PR/3/AC/ZB, PR/3/AS, PR/3/AS/ZB
Mounting rail IEC60715 TH35 15	—	—	—
Marking tag	—	—	—
Spare part relay	8904042	8904042	8904052