

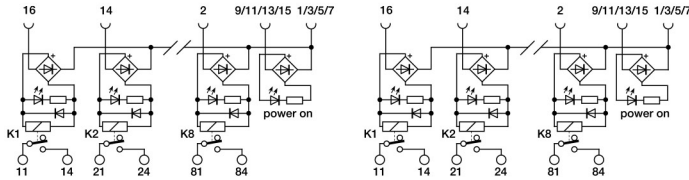
Super Compact 24 Vac/dc Relay Modules Fixed or Pluggable Relays

- Pluggable relay (CRE) and not pluggable (CR)
- AC/DC input voltage
- Fast cabling with pluggable terminal blocks
- Allow PNP and NPN command
- Extremely compact dimensions



NOTE

Manufacturer and model of the relay is not binding, technical data are to be considered typical



CODE TYPE	XCRE83	XCR83
INPUT TECHNICAL DATA	CRE8-3	CR8-3
Input rated voltage	24 Vac/dc ±10%	24 Vac/dc ±10%
Pull in drop out voltage type	16.8 V / 2.4 V	16.8 V / 2.4 V
Current consumption	16 mA ±10%	16 mA ±10%
Turn ON OFF time	15 ms / 5 ms	15 ms / 5 ms
Frequency	—	—
Protection circuit	Free-wheel diode, Reverse polarity	Free-wheel diode, Reverse polarity
Connection type	2.5 mm ² screw type pluggable	2.5 mm ² screw type pluggable
Input channels	8 pluggable	8 not pluggable
OUTPUT TECHNICAL DATA		
Contact type	SPST(NO), 1 Form A (NO), AgSnO ₂	SPST(NO), 1 Form A (NO), AgSnO ₂
Output voltage	—	—
Nominal current	8 A (240 Vac)	8 A (240 Vac)
Max current	8 A	8 A
Leakage current with signal 0	—	—
Min applicable load	—	—
Max fuse current	—	—
Connection type	2.5 mm ² (AWG26-14), screw type pluggable	2.5 mm ² (AWG26-14), screw type pluggable
Protection circuit device	—	—
GENERAL TECHNICAL DATA		
Operating temperature range	-20...+70°C	-20...+70°C
Input output isolation	2.5 kVac / 60 s	2.5 kVac / 60 s
Protection degree	IP 20	IP 20
Reference Standards	—	—
Overvoltage category pollution degree	II / 2	II / 2
Status indication	LED "DC OK" / LED "Relay"	LED "DC OK" / LED "Relay"
Housing material	UL94V-0 plastic material	UL94V-0 plastic material
Dimensions	119x108x35 mm	119x108x22.5 mm
Approximate weight	199 g	199 g
Mounting information	on a rail, side by side	on a rail, side by side
APPROVALS	CE	CE
ACCESSORIES		
Mounting rail IEC60715 TH35 75	PR/3/AC, PR/3/AC/ZB, PR/3/AS, PR/3/AS/ZB	PR/3/AC, PR/3/AC/ZB, PR/3/AS, PR/3/AS/ZB
Mounting rail IEC60715 TH35 15	—	—
Marking tag	—	—
Spare part relay	8904042	8904042