

- Not-pluggable relay
- Allow PNP and NPN command
- Available plug-in jumper for potential distribution

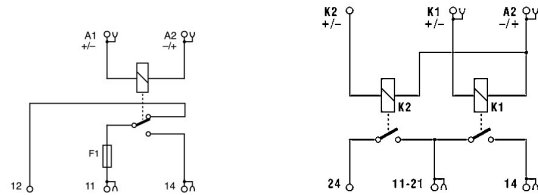
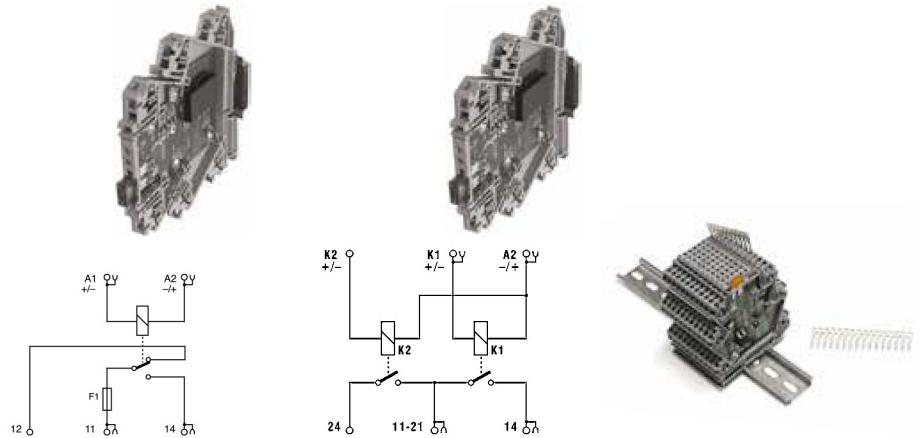
### NOTE

Manufacturer and model of the relay is not binding, technical data are to be considered typical

(1) Version produced upon request; contact our sales office for availability.

(2) the output contact is protected by a 7.5 A replaceable fuse. It can be replaced with a lower value according to the output load and wiring. Greater values than 7.5 A is not allowed. The fuse is suitable for SELV  $\leq$  50 Vac and  $\leq$  75 Vdc voltages; if used with greater voltages it will not guarantee cut-off capability and safe operation.

(3) the final module must always be protected with the CK/PT end plate to ensure an IP20 protection degree



CODE TYPE	XCKR16	XCKR25
<b>INPUT TECHNICAL DATA</b>	<b>CKR16</b>	<b>CKR25 (1)</b>
Input rated voltage	24 Vac/dc $\pm$ 10%	24 Vac/dc $\pm$ 10%
Pull in drop out voltage type	18 V / 1.2 V	18 V / 1.2 V
Current consumption	15 mA $\pm$ 10%	13 mA $\pm$ 10%
Turn ON OFF time	10 ms / 5 ms	10 ms / 5 ms
Frequency	—	—
Protection circuit	Free-wheel diode	Free-wheel diode
Connection type	2.5 mm <sup>2</sup> spring type	2.5 mm <sup>2</sup> spring type
Input channels	1 not pluggable	2 not pluggable
<b>OUTPUT TECHNICAL DATA</b>		
Contact type	SPDT, 1 form C, AgSnO2	SPST(NO), 1 Form A (NO), AgSnO2
Output voltage	—	—
Nominal current	6 A (30 Vac)	5 A (250 Vac)
Max current	10 A peak (2)	10 A
Leakage current with signal 0	—	—
Min applicable load	—	—
Max fuse current	7.5 A (2)	—
Connection type	2.5 mm <sup>2</sup> (AWG26-14), spring type	2.5 mm <sup>2</sup> (AWG26-14), spring type
Protection circuit device	replaceable fuse (2)	—
<b>GENERAL TECHNICAL DATA</b>		
Operating temperature range	-20...+60°C	-20...+60°C
Input output isolation	3 kVac / 60 s	3 kVac / 60 s
Protection degree	IP 00 / IP20 (3)	IP 00 / IP20 (3)
Reference Standards	—	—
Overtoltage category pollution degree	II / 2	II / 2
Status indication	LED "Input"	LED "Input"
Housing material	UL94V-0 plastic material	UL94V-0 plastic material
Dimensions	6x91x100 mm	6x91x100 mm
Approximate weight	40 g	43 g
Mounting information	on a rail, side by side	on a rail, side by side
<b>APPROVALS</b>	<b>CE</b>	<b>CE</b>
<b>ACCESSORIES</b>		
Mounting rail IEC60715 TH35 75	PR/3/AC, PR/3/AC/ZB, PR/3/AS, PR/3/AS/ZB	PR/3/AC, PR/3/AC/ZB, PR/3/AS, PR/3/AS/ZB
Mounting rail IEC60715 TH35 15	—	—
Marking tag	NU0851	NU0851
Spare part relay	—	—
End section	XCKPT	XCKPT
<b>Plugin jumper</b>	PTC/4/02 (2 poles) PTC/4/03 (3 poles) PTC/4/04 (4 poles) PTC/4/05 (5 poles) PTC/4/10 (10 poles) PTC/4/00 (42 poles)	PTC/4/02 (2 poles) PTC/4/03 (3 poles) PTC/4/04 (4 poles) PTC/4/05 (5 poles) PTC/4/10 (10 poles) PTC/4/00 (42 poles)