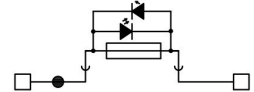
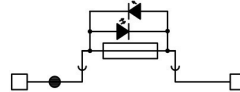
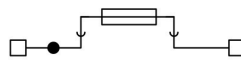




| | | | |
|---------------------|--------------------------------------|--|---|
| GREY VERSION | EFF.4/GR Cat. No. EFF400GR | EFF.4/C48/GR Cat. No. EFF448GR | EFF.4/C230/GR Cat. No. EFF423GR |
| BLUE VERSION | EFF.4/BL Cat. No. EFF400BL | | |

TECHNICAL CHARACTERISTICS



| Function / type | | Fuse-holders 5x20 | Fuse-holders 5x20 with led | Fuse-holders 5x20 with led |
|--|--|-------------------|----------------------------|----------------------------|
| Rated cross-section | (mm ²) | 4 | 4 | 4 |
| Connecting capacity | Flexible (mm ²) | 0,2 ÷ 6 | 0,2 ÷ 6 | 0,2 ÷ 6 |
| | Rigid (mm ²) | 0,2 ÷ 6 | 0,2 ÷ 6 | 0,2 ÷ 6 |
| | Max. flexible with ferrule (mm ²)-ferrule type | 4 - WP40/16 | 4 - WP40/16 | 4 - WP40/16 |
| Electrical characteristics according to European standard IEC EN 60947-7-3 | Maximum voltage AC/DC (V) | 630 | 48 | 230 |
| | Maximum current (with cable from 2,5mm ²) (A) | 6,3 | 6,3 | 6,3 |
| | Section (Caliber) | A4 | A4 | A4 |
| Electrical characteristics according to UL standard | Maximum voltage AC/DC (V) | 600 | 600 | 600 |
| | Maximum current (with cable from 2,5mm ²) (A) | 6.3 | 6.3 | 6.3 |
| | Section Min-Max (AWG) | 24-10 | 24-10 | 24-10 |
| Rated impulse withstand voltage / pollution degree | | 8kV / 3 | 8kV / 3 | 8kV / 3 |
| Insulation stripping length (mm) | | 10 | 10 | 10 |
| Width (mm) | | 6,2 | 6,2 | 6,2 |
| Length (mm) | | 55,2 | 55,2 | 55,2 |
| Height mounted on TH35 / 7.5 (mm) | | 67,1 | 67,1 | 67,1 |
| Height mounted on TH35 / 15 (mm) | | 74,6 | 74,6 | 74,6 |
| Insulation material temperature index (EN 60216-1) (°C) | | 130 | 130 | 130 |
| Plastic material | | Polyamide UL94 V0 | Polyamide UL94 V0 | Polyamide UL94 V0 |

APPROVALS



| ACCESSORIES | | TYPE | CAT. NO. | TYPE | CAT. NO. | TYPE | CAT. NO. |
|--|---|--------------|------------|----------------------------------|------------|----------------------------------|------------|
| End section | grey | EFC.4/PT/GR | EFC401GR | EFC.4/PT/GR | EFC401GR | EFC.4/PT/GR | EFC401GR |
| | blue | EFC.4/PT/BL | EFC401BL | EFC.4/PT/BL | EFC401BL | EFC.4/PT/BL | EFC401BL |
| | End section thickness (mm) | 1,5 | | 1,5 | | 1,5 | |
| "Easy Bridge" (PTC) cross connection | 2 poles | EFB.4/2/R | EFB0402R | EFB.4/2/R | EFB0402R | EFB.4/2/R | EFB0402R |
| | 3 poles | EFB.4/3/R | EFB0403R | EFB.4/3/R | EFB0403R | EFB.4/3/R | EFB0403R |
| | 5 poles | EFB.4/5/R | EFB0405R | EFB.4/5/R | EFB0405R | EFB.4/5/R | EFB0405R |
| | 10 poles | EFB.4/10/R | EFB0410R | EFB.4/10/R | EFB0410R | EFB.4/10/R | EFB0410R |
| | Rated current carrying capacity of jumper (A) | | | | | | |
| Coloured partition | red | DFF.1+1/R | DFF01 | DFF.1+1/R | DFF01 | DFF.1+1/R | DFF01 |
| Miniature fuse | ø 5 x 20mm | F5/... | FN... | F5/... | FN... | F5/... | FN... |
| Led circuit (it contains 2 contact slats, 1 led microcircuits) | For voltage 12V 24V 48V AC/DC | CIL/12-24-48 | CB518 | Already installed on the product | | - | - |
| | For voltage 115V 230V AC/DC | CIL/115-230 | CB523 | - | - | Already installed on the product | |
| 105mm adhesive numbering strip (16 terminal blocks) | | TAM10105AW | TAM10105AW | TAM10105AW | TAM10105AW | TAM10105AW | TAM10105AW |
| Single marking tag | | CNU/10/51 | NU1051S | CNU/10/51 | NU1051S | CNU/10/51 | NU1051S |
| Single marking tag for pitch insert | | CNU/10/61 | NU1061S | CNU/10/61 | NU1061S | CNU/10/61 | NU1061S |
| End bracket | Screw | BT/3 | BT003 | BT/3 | BT003 | BT/3 | BT003 |
| | Snap-fit | BTO | BT007 | BTO | BT007 | BTO | BT007 |