

## ASI421021

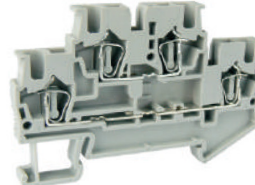
Double-level terminal block  
UJ5-1.5/2-2



UL US CE CCC RoHS

## ASI421022

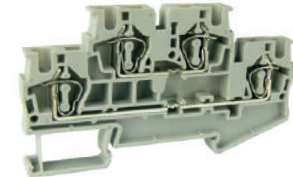
Double-level terminal block  
UJ5-2.5/2-2



UL US CE CCC RoHS

## ASI421023

Double-level terminal block  
UJ5-4/2-2



UL US CE CCC RoHS

Dimensions							
Width/Thickness/Height	(mm)	67.5 / 4.2 / 45.8		67.5 / 5.2 / 45.8		83.5 / 6.2 / 45.8	
Stripping length	(mm)	10		10		10	
Technical data							
Voltage	(V)	500		500		500	
Current	(A)	17.5		26		32	
Cross section	(mm <sup>2</sup> )	1.5		4		6	
Connection capacity							
Solid conductors	(mm <sup>2</sup> )	0.14-1.5		0.2-4		0.2-6	
Stranded conductors	(mm <sup>2</sup> )	0.14-1.5		0.2-2.5		0.2-4	
Terminal block		Type	Order no.	Type	Order no.	Type	Order no.
		UJ5-1.5/2-2	421021	UJ5-2.5/2-2	421022	UJ5-4/2-2	421023
	BU:Blue	UJ5-1.5/2-2(BU)	421072	UJ5-2.5/2-2(BU)	421073	UJ5-4/2-2(BU)	421074
Mounting rail							
Can be installed on the  rails		TH35-7.5	102001	TH35-7.5	102001	TH35-7.5	102001
		TH35-15	102005	TH35-15	102005	TH35-15	102005
End cover							
For electrical isolation in the end of terminal blocks.		UJ5-1.5、2.5/2-2G	422010	UJ5-1.5、2.5/2-2G	422010	UJ5-4/2-2G	422036
Partition plate							
For visual and electrical isolation of the terminal groups.		UJ5-1.5~4/2-2FG	422020	UJ5-1.5~4/2-2FG	422020	UJ5-1.5~4/2-2FG	422020
Test accessories							
Test adapter, for PS-4 test plugs, inserts into the bridge shaft.		UCZ-4	422022	UCZ-4	422022	UCZ-4	422022
Test plug, for 4mm $\Phi$ socket hole.		PS-4	Please refer to the attachment for the ordering data.	PS-4	Please refer to the attachment for the ordering data.	PS-4	Please refer to the attachment for the ordering data.
Modular test plug, for PS-2,3 test plugs, inserts into the bridge shaft. Available for individual terminal or more. Cross section 0.14-1mm <sup>2</sup> , current 9A, voltage 250V.		UZS-4	Can be marked with UBFM4 Marker strip 422023	UZS-5	Can be marked with UBFM5 Marker strip 422024	UZS-6	Can be marked with UBFM6 Marker strip 422025
Test plug, for 2.3mm $\Phi$ socket hole.				PS-2.3	Please refer to the attachment for the ordering data.	PS-2.3	Please refer to the attachment for the ordering data.
Jumpers							
For the bridge of terminals in the center of terminal blocks.		2-pos. UFBS 2-4 423001		UFBS 2-5 423006		UFBS 2-6 423011	
		3-pos. UFBS 3-4 423002		UFBS 3-5 423007		UFBS 3-6 423012	
		4-pos. UFBS 4-4 423003		UFBS 4-5 423008		UFBS 4-6 423013	
		5-pos. UFBS 5-4 423004		UFBS 5-5 423009		UFBS 5-6 423014	
		10-pos. UFBS 10-4 423005		UFBS 10-5 423010		UFBS 10-6 423015	
				UFBS 20-5 423028			
				UFBS 30-5 423029			
Marker carrier							
Please refer to the attachment for the uses.		UJ5 4-2	Can be marked with 2 UZB4 Marker strips 422040	UJ5 5-2	Can be marked with 2 UZB5 Marker strips 422009	UJ5 5-2	Can be marked with 2 UZB5 Marker strips 422009
				UJ5 5-2/S	Can be marked with 2 UZB5 Marker strips 422057	UJ5 5-2/S	Can be marked with 2 UZB5 Marker strips 422057
Marker strip							
Horizontally/Vertically		UBFM 4 (Blank)	424001	UBFM 5 (Blank)	424004	UBFM 6 (Blank)	424007
Can be printed 1-500, or the technical data according to your requirements.		UBFM 4 (Horizontally)	424002	UBFM 5 (Horizontally)	424005	UBFM 6 (Horizontally)	424008
		UBFM 4 (Vertically)	424003	UBFM 5 (Vertically)	424006	UBFM 6 (Vertically)	424009
Warning label							
Insert into the operating holes.		UJ5-1.5J	422027	UJ5-2.5J	422028	UJ5-4J	422029
Screwdriver							
		YB 0.4 x 2.5	304001	YB 0.6 x 3.5	304002	YB 0.6 x 3.5	304002