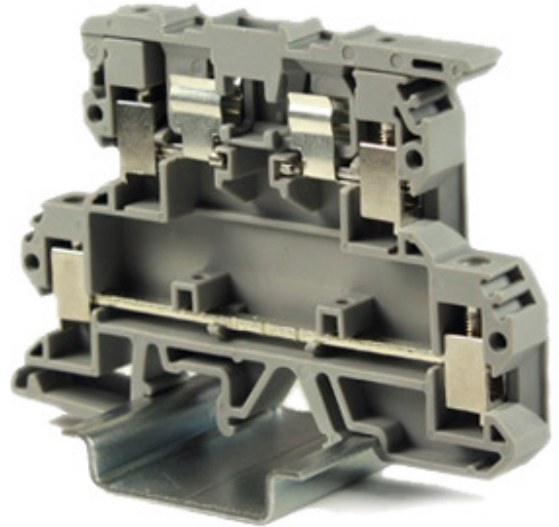


Double Level Fuse Terminal Block for  
5x20 mm fuses.

DIN rail terminal block

Lever style without indication

Screw Clamp 30-10 AWG.



Specifications		
Wire Range AWG	30-10	
Current Rating	6.3 A	
Voltage Rating	500 V	
Dimensions (L x W x H)	73.5 x 8 x 55 mm	
Ordering Information	Order #:	Pcs/Package:
Terminal Block	ASI011309	50
Accessories	Order #:	Pcs/Package:
End Cover	ASI012077	25
Insertion Bridge 2 pos	ASI013031	25
Insertion Bridge 3 pos	ASI013032	25
Insertion Bridge 10 pos	ASI013033	10
End Stop (snap on) Black	ASIUD1B	25
TB Markers Blank	ASIZB610B	10
Marking Pens Black	CT004	2
Marking Pens Red	CT006	2
DIN Rail 7.5x35mm Slotted 1m	PR005-1m	1
DIN Rail 7.5x35mm Slotted 2m	PR005	1
DIN Rail 7.5x35mm Non-Slotted 1m	PR003-1m	1
DIN Rail 7.5x35mm Non-Slotted 2m	PR003	1