

H Series

- mounted onto PR/3 profiles conforming to IEC 60715 standards, TH/35 type
- with three stacked / two feed-through circuits + earth
- available in grey or earth with yellow/green shell
- patented "Easy Bridge" system: possibility of inserting modular multi-pole cross connections (PTCs), with no need for additional protections
- **HLD.2** and **HDE.2**: possibility of housing electronic components among the three levels - max. thickness of insertable components: 3.9 mm
- can be coupled together
- maximum operating temperature 100°C
- INERIS 16 ATEX 9002U Ex e (Ex) and I M2 Ex e I Mb II 2G Ex e IIC Gb certificate operating temperature: 100°C
- CoC IECEx INE 16.0032U



The /GR tag indicates the grey version.

grey version (/earth)

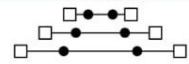
version with internal connection

(Ex)i version

TECHNICAL CHARACTERISTICS

function/type	
rated cross-section	(mm ²)
connecting capacity	
flexible	(mm ²)
rigid	(mm ²)
max. flexible with ferrule (mm ²) - ferrule type	
rated voltage / rated current / gauge	conf. to IEC 60947-7-1
rated voltage / rated current / AWG	UL
(Ex e) rated voltage [] / [] / rated current	
rated impulse withstand voltage / pollution degree	
insulation stripping length	(mm)
tightening torque value (test / max)	(Nm)
height / width / thickness	TH/35 7.5 mm
height / width / thickness	TH/35 15 mm
height / width / thickness	G32

APPROVALS



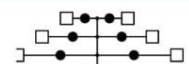
HLD.2/GR	Cat. No. HL200GR
HLD.2/CI/GR	Cat. No. HL210GR
HLD.2 (Ex)i	Cat. No. HD510

Three feed-through levels	2.5
0.2-2.5	0.2-2.5
0.2-2.5	0.2-2.5
1.5-WP15/14	1.5-WP15/14
500 V / 24 A / B2	500 V / 24 A / B2
400 V / 24 A	400 V / 24 A
8 KV / 3	8 KV / 3
10	10
-	-
75 / 95 / 5.2	75 / 95 / 5.2
83 / 95 / 5.2	83 / 95 / 5.2
-	-



HDE.2/GR	Cat. No. HL500GR
-----------------	-------------------------

Two feed-through levels + earth	2.5
0.2-2.5	0.2-2.5
0.2-2.5	0.2-2.5
1.5-WP15/14	1.5-WP15/14
500 V / 24 A / B2	500 V / 24 A / B2
400 V / 24 A	400 V / 24 A
8 KV / 3	8 KV / 3
10	10
-	-
75 / 95 / 5.2	75 / 95 / 5.2
83 / 95 / 5.2	83 / 95 / 5.2
-	-



HTTE.2	Cat. No. HLT500
---------------	------------------------

Three cross-connected earth levels	2.5
0.2-2.5	0.2-2.5
0.2-2.5	0.2-2.5
1.5-WP15/14	1.5-WP15/14
500 V / 24 A / B2	500 V / 24 A / B2
400 V / 24 A	400 V / 24 A
8 KV / 3	8 KV / 3
10	10
-	-
75 / 95 / 5.2	75 / 95 / 5.2
83 / 95 / 5.2	83 / 95 / 5.2
-	-



ACCESSORIES

End sections	grey blue
"Easy Bridge" (PTC) cross connection (intrinsically IPXXB protected once mounted)	
Available also in coloured version (PTP)	
Ref. p. 130	
Rated current carrying capacity of jumper	(A)
Cross-connection identification strip (100 mm)	green
Jumper barrier	
Coloured partition	red, green, white
Test plug socket	
Numbering strip	
Screwdriver for activation of the spring	
Screw and sleeve for short-circuit plates (with socket)	
Marking tag	printed or blank
End bracket	

Type	Cat. No.
HLD.2/PT/GR	HL201GR
PTC/03/02 poles	PTC0302
PTC/03/03 poles	PTC0303
PTC/03/05 poles	PTC0305
PTC/03/10 poles	PTC0310
PTC/03/00 (47 poles)	PTC0300
24	
DFM/500	DF500
CNU/8/51	NU0851
CCH/2.5-4	CCH02
CNU/8/51	NU0851
BTU for PR/DIN and PR/3	BT005
BTO	BT007
BT/3 for PR/3 only	BT003

Type	Cat. No.
HLD.2/PT/GR	HL201GR
PTC/03/02 poles	PTC0302
PTC/03/03 poles	PTC0303
PTC/03/05 poles	PTC0305
PTC/03/10 poles	PTC0310
PTC/03/00 (47 poles)	PTC0300
24	
DFM/500	DF500
CNU/8/51	NU0851
CCH/2.5-4	CCH02
CNU/8/51	NU0851
BTU for PR/DIN and PR/3	BT005
BTO	BT007
BT/3 for PR/3 only	BT003

Type	Cat. No.
HLD.2/PT/GR	HL201GR
PTC/03/02 poles	PTC0302
PTC/03/03 poles	PTC0303
PTC/03/05 poles	PTC0305
PTC/03/10 poles	PTC0310
PTC/03/00 (47 poles)	PTC0300
24	
DFM/500	DF500
CNU/8/51	NU0851
CCH/2.5-4	CCH02
CNU/8/51	NU0851
BTU for PR/DIN and PR/3	BT005
BTO	BT007
BT/3 for PR/3 only	BT003