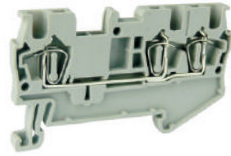


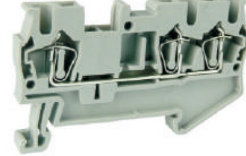
ASI421027

Terminal block with 3 connections
UJ5-1.5/1×2



ASI421028

Terminal block with 3 connections
UJ5-2.5/1×2



ASI421029

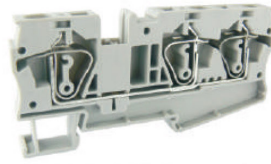
Terminal block with 3 connections
UJ5-4/1×2



Dimensions							
Width/Thickness/Height	(mm)	60.4 / 4.2 / 35.2		60.4 / 5.2 / 35.2		71.5 / 6.2 / 35.2	
Stripping length	(mm)	10		10		10	
Technical data							
Voltage	(V)	500		800		800	
Current	(A)	17.5		28		40	
Cross section	(mm ²)	1.5		4		6	
Connection capacity							
Solid conductors	(mm ²)	0.14-1.5		0.2-4		0.2-6	
Stranded conductors	(mm ²)	0.14-1.5		0.2-2.5		0.2-4	
Terminal block		Type	Order no.	Type	Order no.	Type	Order no.
		UJ5-1.5/1×2	421027	UJ5-2.5/1×2	421028	UJ5-4/1×2	421029
BU:Blue		UJ5-1.5/1×2 (BU)	421075	UJ5-2.5/1×2 (BU)	421076	UJ5-4/1×2 (BU)	421077
Mounting rail							
Can be installed on the rails		TH35-7.5	102001	TH35-7.5	102001	TH35-7.5	102001
		TH35-15	102005	TH35-15	102005	TH35-15	102005
End cover							
For electrical isolation in the end of terminal blocks.		UJ5-1.5, 2.5/1×2G	422012	UJ5-1.5, 2.5/1×2G	422012	UJ5-4/1×2G	422037
Partition plate							
For visual and electrical isolation of the terminal groups.		UJ5-1.5~4/1×2FG	422019	UJ5-1.5~4/1×2FG	422019	UJ5-1.5~4/1×2FG	422019
Spacer plate							
Compensates for level offsets		UJ5-2.5LG/RG	422007	UJ5-2.5LG/RG	422007	UJ5-4LG/RG	422035
Test accessories							
Test adapter, for PS-4 test plugs, inserts into the bridge shaft.		UCZ-4	422022	UCZ-4	422022	UCZ-4	422022
Test plug, for 4mm \varnothing socket hole. Modular test plug, for PS-2,3 test plugs, inserts into the bridge shaft. Available for individual terminal or more. Cross section 0.14-1mm ² , current 9A, voltage 250V.		PS-4	Please refer to the attachment for the ordering data.	PS-4	Please refer to the attachment for the ordering data.	PS-4	Please refer to the attachment for the ordering data.
		UZS-4	Can be marked with UBFM4 Marker strip	UZS-5	Can be marked with UBFM5 Marker strip	UZS-6	Can be marked with UBFM6 Marker strip
Test plug, for 2.3mm \varnothing socket hole.				PS-2,3	Please refer to the attachment for the ordering data.	PS-2,3	Please refer to the attachment for the ordering data.
Jumpers							
For the bridge of terminals in the center of terminal blocks.		2-pos. UFBS 2-4	423001	UFBS 2-5	423006	UFBS 2-6	423011
		3-pos. UFBS 3-4	423002	UFBS 3-5	423007	UFBS 3-6	423012
		4-pos. UFBS 4-4	423003	UFBS 4-5	423008	UFBS 4-6	423013
		5-pos. UFBS 5-4	423004	UFBS 5-5	423009	UFBS 5-6	423014
		10-pos. UFBS 10-4	423005	UFBS 10-5	423010	UFBS 10-6	423015
		20-pos.		UFBS 20-5	423028		
		30-pos.		UFBS 30-5	423029		
Marker strip							
Horizontally/Vertically		UZB 4-10 (Blank)	014013	UZB 5-10 (Blank)	014001	UZB 6-10 (Blank)	014002
Can be printed 1-600, or the technical data according to your requirements.		Center		Center		Center	
		UZB 4-10 (Horizontally)	014014	UZB 5-10 (Horizontally)	014005	UZB 6-10 (Horizontally)	014007
		UZB 4-10 (Vertically)	014015	UZB 5-10 (Vertically)	014006	UZB 6-10 (Vertically)	014008
		Sides		Sides		Sides	
		UBFM 4 (Blank)	424001	UBFM 5 (Blank)	424004	UBFM 6 (Blank)	424007
		UBFM 4 (Horizontally)	424002	UBFM 5 (Horizontally)	424005	UBFM 6 (Horizontally)	424008
		UBFM 4 (Vertically)	424003	UBFM 5 (Vertically)	424006	UBFM 6 (Vertically)	424009
Warning label							
Insert into the operating holes.		UJ5-1.5J	422027	UJ5-2.5J	422028	UJ5-4J	422029
Screwdriver							
		YB 0.4×2.5	304001	YB 0.6×3.5	304002	YB 0.6×3.5	304002

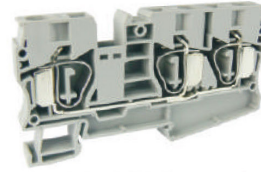
ASI421030

Terminal block with 3 connections
UJ5-6/1×2



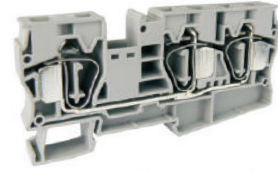
ASI421118

Terminal block with 3 connections
UJ5-10/1×2



ASI421120

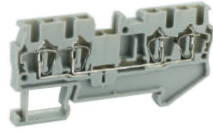
Terminal block with 3 connections
UJ5-16/1×2



Dimensions		ASI421030		ASI421118		ASI421120		
Width/Thickness/Height	(mm)	90.5 / 8.2 / 42.2		94.8 / 10.2 / 49.6		107 / 12.2 / 50.6		
Stripping length	(mm)	12		18		18		
Technical data								
Voltage	(V)	800		800		800		
Current	(A)	52		65		90		
Cross section	(mm ²)	10		16		25		
Connection capacity								
Solid conductors	(mm ²)	0.5-10		1.5-16		1.5-25		
Stranded conductors	(mm ²)	0.5-6		1.5-10		1.5-16		
Terminal block		Type	Order no.	Type	Order no.	Type	Order no.	
		UJ5-6/1×2	421030	UJ5-10/1×2	421118	UJ5-16/1×2	421120	
BU:Blue		UJ5-6/1×2 (BU)	421078	UJ5-10/1×2 (BU)	421119	UJ5-16/1×2 (BU)	421121	
Mounting rail								
Can be installed on the rails		TH35-7.5	102001	TH35-7.5	102001	TH35-7.5	102001	
		TH35-15	102005	TH35-15	102005	TH35-15	102005	
End cover								
For electrical isolation in the end of terminal blocks.		UJ5-6/1×2G	422038	UJ5-10/1×2G	422048	UJ5-16/1×2G	422050	
Partition plate								
For visual and electrical isolation of the terminal groups.		UJ5-6/1×2FG	422044					
Spacer plate								
Compensates for level offsets		UJ5-6LG/RG	422047	UJ5-10/RG	422049	UJ5-16/RG	422051	
Test accessories								
Test adapter, for PS-4 test plugs, inserts into the bridge shaft.		UCZ-4	422022					
Test plug, for 4mm \varnothing socket hole.		PS-4	Please refer to the attachment for the ordering data.					
Modular test plug, for PS-2.3 test plugs, inserts into the bridge shaft. Available for individual terminal or more. Cross section 0.14-1mm ² , current 9A, voltage 250V.		UZS-8	Can be marked with UBFM8 Marker strip	422026				
Test plug, for 2.3mm \varnothing socket hole.		PS-2.3	Please refer to the attachment for the ordering data.					
Jumpers								
For the bridge of terminals in the center of terminal blocks		2-pos. UFBS 2-8	423016	UFBS 2-10	423021	UFBS 2-12	423022	
		3-pos. UFBS 3-8	423017					
		4-pos. UFBS 4-8	423018					
		5-pos. UFBS 5-8	423019					
		10-pos. UFBS 10-8	423020					
Marker strip								
Horizontally/Vertically		Blank	UZB 8-10 (Blank)	014003	UZB 10-10 (Blank)	014004	UZB 10-10 (Blank)	014004
Can be printed 1-600, or the technical data according to your requirements.		Horizontally	Center UZB 8-10 (Horizontally)	014009	UZB 10-10 (Horizontally)	014011	UZB 10-10 (Horizontally)	014011
		Vertically	UZB 8-10 (Vertically)	014010	UZB 10-10 (Vertically)	014012	UZB 10-10 (Vertically)	014012
			UBFM 8 (Blank)	424010	UBFM 8 (Blank)	424010	UBFM 8 (Blank)	424010
			Sides UBFM 8 (Horizontally)	424011	UBFM 8 (Horizontally)	424011	UBFM 8 (Horizontally)	424011
			UBFM 8 (Vertically)	424012	UBFM 8 (Vertically)	424012	UBFM 8 (Vertically)	424012
Warning label								
Insert into the operating holes.		UJ5-6J	422030	UJ5-10J	422031	UJ5-16J	422032	
Screwdriver								
		YB 0.6×4.0	304003	YB 1.0×5.0	304004	YB 1.0×5.0	304004	

ASI421008

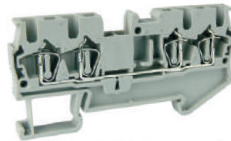
Terminal block with 4 connections
UJ5-1.5/2×2



UL US CE CCC ENEC RoHS

ASI421009

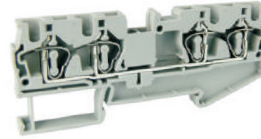
Terminal block with 4 connections
UJ5-2.5/2×2



UL US CE CCC ENEC RoHS

ASI421010

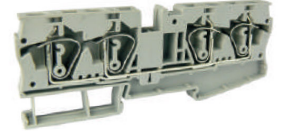
Terminal block with 4 connections
UJ5-4/2×2



UL US CE CCC ENEC RoHS

ASI421116

Terminal block with 4 connections
UJ5-6/2×2

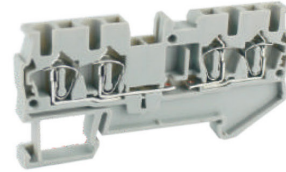


UL US CE CCC ENEC RoHS

Dimensions	ASI421008		ASI421009		ASI421010		ASI421116	
Width/Thickness/Height (mm)	72 / 4.2 / 35.2		72 / 5.2 / 35.2		87 / 6.2 / 35.2		112 / 8.2 / 42.2	
Stripping length (mm)	10		10		10		12	
Technical data								
Voltage (V)	500		800		800		800	
Current (A)	17.5		28		40		52	
Cross section (mm ²)	1.5		4		6		10	
Connection capacity								
Solid conductors (mm ²)	0.14-1.5		0.2-4		0.2-6		0.5-10	
Stranded conductors (mm ²)	0.14-1.5		0.2-2.5		0.2-4		0.5-6	
Terminal block	Type	Order no.	Type	Order no.	Type	Order no.	Type	Order no.
	UJ5-1.5/2×2	421008	UJ5-2.5/2×2	421009	UJ5-4/2×2	421010	UJ5-6/2×2	421116
BU:Blue	UJ5-1.5/2×2(BU)	421069	UJ5-2.5/2×2(BU)	421070	UJ5-4/2×2(BU)	421071	UJ5-6/2×2(BU)	421117
Mounting rail								
Can be installed on the rails	TH35-7.5	102001	TH35-7.5	102001	TH35-7.5	102001	TH35-7.5	102001
	TH35-15	102005	TH35-15	102005	TH35-15	102005	TH35-15	102005
End cover								
For electrical isolation in the end of terminal blocks.	UJ5-1.5 . 2.5/2×2G	422006	UJ5-1.5 . 2.5/2×2G	422006	UJ5-4/2×2G	422008	UJ5-6/2×2G	422046
Partition plate								
For visual and electrical isolation of the terminal groups.	UJ5-1.5--4/2×2FG	422018	UJ5-1.5--4/2×2FG	422018	UJ5-1.5--4/2×2FG	422018		
Spacer plate								
Compensates for level offsets	UJ5-2.5LG/RG	422007	UJ5-2.5LG/RG	422007	UJ5-4LG/RG	422035	UJ5-6LG/RG	422047
Test accessories								
Test adapter, for PS-4 test plugs, inserts into the bridge shaft.	UCZ-4	422022	UCZ-4	422022	UCZ-4	422022	UCZ-4	422022
Test plug, for 4mm Φ socket hole.	PS-4	Please refer to the attachment for the ordering data.	PS-4	Please refer to the attachment for the ordering data.	PS-4	Please refer to the attachment for the ordering data.	PS-4	Please refer to the attachment for the ordering data.
Modular test plug, for PS-2.3 test plugs, inserts into the bridge shaft. Available for individual terminal or more. Cross section 0.14-1mm ² , current 9A, voltage 250V.	UZS-4	Can be marked with UBFM4 Marker strip	422023	UZS-5	Can be marked with UBFM5 Marker strip	422024	UZS-6	Can be marked with UBFM6 Marker strip
							UZS-8	Can be marked with UBFM8 Marker strip
								422026
Test plug, for 2.3mm Φ socket hole.				PS-2.3	Please refer to the attachment for the ordering data.		PS-2.3	Please refer to the attachment for the ordering data.
Jumpers								
For the bridge of terminals in the center of terminal blocks.	2-pos. UFBS 2-4	423001	UFBS 2-5	423006	UFBS 2-6	423011	UFBS 2-8	423016
	3-pos. UFBS 3-4	423002	UFBS 3-5	423007	UFBS 3-6	423012	UFBS 3-8	423017
	4-pos. UFBS 4-4	423003	UFBS 4-5	423008	UFBS 4-6	423013	UFBS 4-8	423018
	5-pos. UFBS 5-4	423004	UFBS 5-5	423009	UFBS 5-6	423014	UFBS 5-8	423019
	10-pos. UFBS 10-4	423005	UFBS 10-5	423010	UFBS 10-6	423015	UFBS 10-8	423020
			UFBS 20-5	423028				
			UFBS 30-5	423029				
Marker strip								
Horizontally/Vertically Blank	UZB 4-10 (Blank)	014013	UZB 5-10 (Blank)	014001	UZB 6-10 (Blank)	014002	UZB 8-10 (Blank)	014003
Can be printed 1-600, Horizontally or the technical data according to your requirements. Vertically	Center							
	UZB 4-10 (Horizontally)	014014	UZB 5-10 (Horizontally)	014005	UZB 6-10 (Horizontally)	014007	UZB 8-10 (Horizontally)	014009
	UZB 4-10 (Vertically)	014015	UZB 5-10 (Vertically)	014006	UZB 6-10 (Vertically)	014008	UZB 8-10 (Vertically)	014010
	Sides							
	UBFM 4 (Blank)	424001	UBFM 5 (Blank)	424004	UBFM 6 (Blank)	424007	UBFM 8 (Blank)	424010
	UBFM 4 (Horizontally)	424002	UBFM 5 (Horizontally)	424005	UBFM 6 (Horizontally)	424008	UBFM 8 (Horizontally)	424011
	UBFM 4 (Vertically)	424003	UBFM 5 (Vertically)	424006	UBFM 6 (Vertically)	424009	UBFM 8 (Vertically)	424012
Warning label								
Insert into the operating holes.	UJ5-1.5J	422027	UJ5-2.5J	422028	UJ5-4J	422029	UJ5-6J	422030
Screwdriver	YB 0.4×2.5	304001	YB 0.6×3.5	304002	YB 0.6×3.5	304002	YB 0.6×4.0	304003

ASI421122

Disconnect terminal block
with 4 connections
UJ5-6/2 × 2-U



cUL us CE RoHS

Dimensions	
Width/Thickness/Height (mm)	112 / 8.2 / 42.2
Stripping length (mm)	12
Technical data	
Voltage (V)	800
Current (A)	52
Cross section (mm ²)	10
Connection capacity	
Solid conductors (mm ²)	0.5-10
Stranded conductors (mm ²)	0.5-6
Terminal block	
Type	Order no.
UJ5-6/2 × 2-U	421122

Mounting rail	
Can be installed on the rails	
TH35-7.5	102001
TH35-15	102005

End cover	
For electrical isolation in the end of terminal blocks.	
UJ5-6/2 × 2G	422046

Partition plate	
For visual and electrical isolation of the terminal groups.	

Spacer plate	
For visual and electrical isolation of the terminal groups.	
UJ5-6LG/RG	422047

Test accessories	
Test adapter, for PS-4 test plugs, inserts into the bridge shaft.	UCZ-4 422022

Test plug, for 4mm ∅ socket hole.	PS-4	Please refer to the attachment for the ordering data.
Modular test plug, for PS-2.3 test plugs, inserts into the bridge shaft. Available for individual terminal or more. Cross section 0.14-1mm ² , current 9A, voltage 250V.	UZS-8	Can be marked with UBFM8 Marker strip 422026

Test plug, for 2.3mm ∅ socket hole.	PS-2.3	Please refer to the attachment for the ordering data.
-------------------------------------	--------	---

Jumpers	
For the bridge of terminals in the center of terminal blocks.	
2-pos.	UFBS 2-8 423016
3-pos.	UFBS 3-8 423017
4-pos.	UFBS 4-8 423018
5-pos.	UFBS 5-8 423019
10-pos.	UFBS 10-8 423020
20-pos.	
30-pos.	

Marker strip		
Horizontally/Vertically	Blank	UZB 8-10 (Blank) 014003
Can be printed 1-600, or the technical data according to your requirements.	Horizontally	UZB 8-10 (Horizontally) 014009
	Vertically	UZB 8-10 (Vertically) 014010
		UBFM 8 (Blank) 424010
		UBFM 8 (Horizontally) 424011
		UBFM 8 (Vertically) 424012

Warning label	
Insert into the operating holes.	UJ5-6J 422030
Screwdriver	YB 0.6 × 4.0 304003