


The compact design can keep pace with the growing need for ever smaller switch boxes.

The miniature terminal blocks have the following advantages:

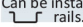
- 1.Small in size.
- 2.Can be installed on the  rails.
- 3.They are fitted with insulating accessories, such as end cover, partition plate, etc.
- 4.Can be bridged in terminal center or side.
- 5.Visual marking.

## ASIUK1.5TWIN

Miniature feed-through terminal block with 3 connections  
**UKJ-1.5MT/1 × 2**



CE  RoHS

<b>Dimensions</b>		
Width/Thickness/Height	(mm)	28 / 4.2 / 29.5
Screw thread	(mm)	M2
Tightening torque	(Nm)	0.22-0.25
Stripping length	(mm)	6
<b>Technical data</b>		
Voltage	(V)	400
Max. operating current	(A)	17.5
Cross section	(mm <sup>2</sup> )	1.5
<b>Connection capacity</b>		
Solid conductors	(mm <sup>2</sup> )	0.14-1.5
Stranded conductors	(mm <sup>2</sup> )	0.14-1.5
<b>Terminal block</b>		
	Type	Order no.
	UKJ-1.5MT/1 × 2	011044
BU:Blue	UKJ-1.5MT/1 × 2 (BU)	011132
<b>Mounting rail</b>		
Can be installed on the  rails.		
	TH15-5.5	102004
<b>End cover</b>		
For electrical isolation in the end of terminal blocks.		
	UKJ-1.5MT/1 × 2G	012026
BU:Blue	UKJ-1.5MT/1 × 2G (BU)	012068
<b>Spacer plate</b>		
Compensates for level offsets.		
<b>Fixed bridge</b>		
For cross connection in the terminal center.	2-pos. 3-pos. 4-pos. 10-pos.	UFBM 2-4 UFBM 3-4 UFBM 4-4 UFBM 10-4
		013122 013123 013124 013029
<b>Marker strip</b>		
Horizontally/Vertically	Blank	UZBM 4-10(Blank)
		014016
Can be printed 1-600, or the technical data according to your requirements.	Horizontally	UZBM 4-10(Horizontally)
		014017
	Vertically	UZBM 4-10(Vertically)
		014018
<b>Screwdriver</b>		
		YB 0.4 × 2.5
		304001

## ASIUK3TWIN

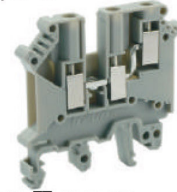
Terminal block with 3 connections  
UKJ-2.5/1×2



UL US CE CCC ENEC RoHS

## ASIUK5TWIN

Terminal block with 3 connections  
UKJ-4/1×2



UL US CE CCC ENEC RoHS

Dimensions					
Width/Thickness/Height	(mm)	50.5 / 5.2 / 47		50.5 / 6.2 / 47	
Screw thread	(mm)	M3		M3	
Tightening torque	(Nm)	0.6-0.8		0.6-0.8	
Stripping length	(mm)	8		8	
Technical data					
Voltage	(V)	400		500	
Max. operating current	(A)	24		32	
Cross section	(mm <sup>2</sup> )	2.5		4	
Connection capacity					
Solid conductors	(mm <sup>2</sup> )	0.2-2.5		0.2-4	
Stranded conductors	(mm <sup>2</sup> )	0.2-2.5		0.2-4	
Terminal block	Type	Order no.	Type	Order no.	
	UKJ-2.5/1×2	011039	UKJ-4/1×2	011040	
	BU:Blue UKJ-2.5/1×2 (BU)	011129	UKJ-4/1×2 (BU)	011130	
Mounting rail					
Can be installed on the rails both  and	TH35-7.5	102001	TH35-7.5	102001	
	TH35-15	102005	TH35-15	102005	
	G32-15	102002	G32-15	102002	
	G32-18	102003	G32-18	102003	
End cover					
For electrical isolation in the end of terminal blocks.	UKJ-4/1×2G	012024	UKJ-4/1×2G	012024	
	BU:Blue UKJ-4/1×2G (BU)	012066	UKJ-4/1×2G (BU)	012066	
Spacer plate					
Compensates for level offsets.					
Separating disk					
For separation of neighboring bridges, can be fitted later, no loss of pitch.	UKJ-G (TS-K)	012003	UKJ-G (TS-K)	012003	
Fixed bridge					
For cross connection in the terminal center.	2-pos.	UFBI 2-5	013071	UFBI 2-6	013072
	3-pos.	UFBI 3-5	013070	UFBI 3-6	013073
Screw heads with insulation collar or without.	4-pos.	UFBI 4-5	013140	UFBI 4-6	013078
	10-pos.	UFBI 10-5	013001	UFBI 10-6	013002
	N:With insulation collar	2-pos.	UFBI 2-5N	013141	UFBI 2-6N
		3-pos.	UFBI 3-5N	013142	UFBI 3-6N
		4-pos.	UFBI 4-5N	013143	UFBI 4-6N
		10-pos.	UFBI 10-5N	013052	UFBI 10-6N
					013047
Insertion bridge					
For the connection points with conductors, makes level bridge possible.	2-pos.	UEB 2-5	013018	UEB 2-6	013019
	3-pos.	UEB 3-5	013026	UEB 3-6	013027
	10-pos.	UEB 10-5	013012	UEB 10-6	013013
Isolator bridge bar					
A jumping bridge can be made.				UISSBI 10-6	013189
Marker strip					
Horizontally/Vertically	Blank	UZB 5-10(Blank)	014001	UZB 6-10(Blank)	014002
Can be printed 1-600, or the technical data according to your requirements.	Horizontally	UZB 5-10(Horizontally)	014005	UZB 6-10(Horizontally)	014007
	Vertically	UZB 5-10(Vertically)	014006	UZB 6-10(Vertically)	014008
Screwdriver					
		YB 0.6×3.5	304002	YB 0.6×3.5	304002