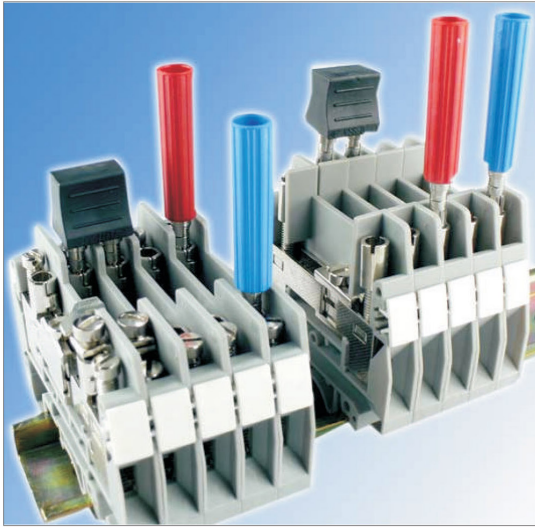


Knife Disconnect and Sliding Link Terminal Blocks



Easy and clear testing in current transformer secondary circuits can be performed using the test terminal blocks. On both sides of the disconnect point, the terminal block has a test socket which can be directly connected with a test plug.

The disconnect slide has the advantages of convenient operation, stable structure and strong anti-short-circuit ability. The screwdriver does not slide from the slide screw.



Figure 1, switching jumper: for two terminal blocks, usable for both sides of the disconnect slide.



Figure 2, fixed bridge: for cross connection in the terminal center.

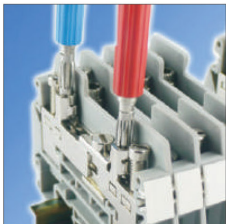


Figure 3, test plug: for test connection.

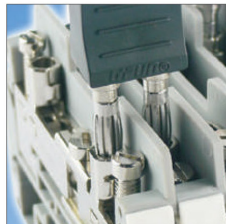
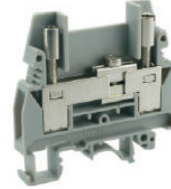


Figure 4, short-circuit plug: for short circuiting neighboring terminal blocks.

ASIURTKSBEN

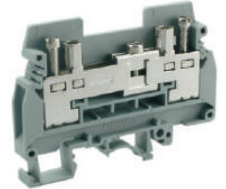
Test terminal block
UKJ-6SB



CE RoHS

ASIURTKS

Test terminal block
UKJ-6S



UL us CE RoHS

Dimensions		CE RoHS		UL us CE RoHS	
Width/Thickness/Height	(mm)	61.5 / 8.2 / 57.5		72.8 / 8.2 / 51	
Screw thread	(mm)	M4		M4	
Tightening torque	(Nm)	1.5-1.8		1.5-1.8	
Stripping length	(mm)	13		13	
Technical data					
Voltage	(V)	500		400	
Max. operating current	(A)	57		57	
Cross section	(mm ²)	10		10	
Connection capacity					
Solid conductors	(mm ²)	0.5-10		0.5-10	
Stranded conductors	(mm ²)	0.5-6		0.5-6	
Terminal block		Type	Order no.	Type	Order no.
		UKJ-6SB	011036	UKJ-6S	011020
		BU:Blue UKJ-6SB (BU)	011128	UKJ-6S (BU)	011114
Mounting rail					
Can be installed on the rails both and		TH35-7.5	102001	TH35-7.5	102001
		TH35-15	102005	TH35-15	102005
		G32-15	102002	G32-15	102002
		G32-18	102003	G32-18	102003
End cover					
For electrical isolation in the end of terminal blocks.		UKJ-6SBG	012020	UKJ-6SG	012009
		BU:Blue UKJ-6SBG (BU)	012073	UKJ-6SG (BU)	012074
Test plug					
For a test of electrical data with a contact in sockets with a 4mm diameter.		PS-4	Please refer to the attachment for the ordering data.	PS-4	See figure 3 Please refer to the attachment for the ordering data.
Short-circuit plug					
For short circuiting neighboring terminal blocks.		KSS-8	016001	KSS-8	See figure 4 016001
Switching jumper					
For two terminal blocks, usable for both sides of the disconnect point, with 2 screws. Outward switching				UFB 2-RTK/S	See figure 1 013011
Fixed bridge					
For cross connection in the terminal center.				UFBI 10-RTK/S	See figure 2 013010
Insertion bridge					
For the connection points with conductors, makes level bridge possible.		2-pos. UEB 2-8	013020	UEB 2-8	013020
		3-pos. UEB 3-8	013024	UEB 3-8	013024
		10-pos. UEB 10-8	013014	UEB 10-8	013014
Marker strip					
Horizontally/Vertically		Blank	UZB 8-10(Blank)	014003	UZB 8-10(Blank)
Can be printed 1-600, or the technical data according to your requirements.		Horizontally	UZB 8-10 (Horizontally)	014009	UZB 8-10 (Horizontally)
		Vertically	UZB 8-10 (Vertically)	014010	UZB 8-10 (Vertically)
Screwdriver					
		YB 1.0×4.0		YB 1.0×4.0	

ASIUK5MTKPP

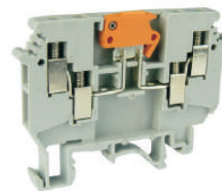
Knife disconnect terminal block with test socket screw
UKJ-2.5SKE



CE

ASIUDK4MTKPP

Knife disconnect terminal block with test socket screw and 4 connections
UKJ-4/2×2SKE



CE

Dimensions					
Width/Thickness/Height	(mm)	52 / 6.2 / 46		63.5 / 6.2 / 46.2	
Screw thread	(mm)	M3		M3	
Tightening torque	(Nm)	0.6-0.8		0.6-0.8	
Stripping length	(mm)	8		8	
Technical data					
Voltage	(V)	500		690	
Max. operating current	(A)	16		16	
Cross section	(mm ²)	4		6	
Connection capacity					
Solid conductors	(mm ²)	0.2-4		0.2-6	
Stranded conductors	(mm ²)	0.2-4		0.2-4	
Terminal block		Type	Order no.	Type	Order no.
		UKJ-2.5SKE	011484	UKJ-4/2×2SKE	011485
Mounting rail					
Can be installed on the rails both		TH35-7.5	102001	TH35-7.5	102001
		TH35-15	102005	TH35-15	102005
		G32-15	102002	G32-15	102002
		G32-18	102003	G32-18	102003
End cover					
For electrical isolation in the end of terminal blocks.				UKJ-4/2×2G	012006
Covering hood					
Provide touch-proof and dust-proof encapsulation.					
Test plug					
For a test of electrical data with a contact in sockets with a 2.3mm diameter.					
Short-circuit plug					
For short circuiting neighboring terminal blocks.					
Switching jumper					
For two terminal blocks, usable for both sides of the disconnect point, with 2 screws. Outward switching					
Fixed bridge					
For cross connection in the terminal center.	2-pos.				
Screw heads with insulation collar or without.	3-pos.				
	4-pos.				
	10-pos.				
N: With insulation collar	2-pos.				
	3-pos.				
	4-pos.				
	10-pos.				
Insertion bridge					
For the connection points with conductors, makes level bridge possible.	2-pos.	UEB 2-6EE	013243	UEB 2-6EE	013243
	3-pos.	UEB 3-6EE	013244	UEB 3-6EE	013244
	10-pos.	UEB 10-6EE	013245	UEB 10-6EE	013245
Marker strip					
Horizontally/Vertically	Blank	UZB 6-10(Blank)	014002	UZB 6-10(Blank)	014002
Can be printed 1-600, or the technical data according to your requirements.	Horizontally	UZB 6-10(Horizontally)	014007	UZB 6-10(Horizontally)	014007
	Vertically	UZB 6-10(Vertically)	014008	UZB 6-10(Vertically)	014008
Screwdriver					
		YB 0.6×3.5	304002	YB 0.6×3.5	304002