

Extruded Printed Circuit Board Tray

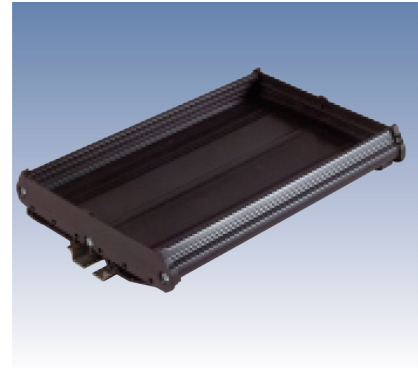
The ET series of extruded printed circuit board trays can accommodate circuit boards in widths of 2.56" / 2.83" / 3.94" / 4.21".

The ET series of trays can either be mounted to a standard DIN rail using the mounting feet or directly on a back panel using the panel mounting ears.

Trays can be ordered as raw extrusion, which can be cut to length. Alternately, ASI's value-added department can cut trays to specified lengths and can even provide complete tray kits.



ET 72



ET 107

ORDERING INFORMATION
Extruded tray,
3 foot tray
Pre-cut tray *
Pre-assembled kit *
End cover, includes mounting screws
Panel mounting ear
DIN rail mounting foot
Reducing spacer
for 2.56" (65mm) board
for 3.94" (100mm) board

TYPE	CATALOG No.	Pcs/PKG
ET72-36.00	20360	1
ET72-xx.xx		5
ET72K-xx.xx		10
ET72EC	20370	10
ET-PME	20373	10
ET72MF	20371	10
ET72 x 65	20372	10
—		

TYPE	CATALOG No.	Pcs/PKG
ET107-36.00	21360	1
ET107-xx.xx		5
ET107K-xx.xx		10
ET107EC	21370	10
ET-PME	20373	10
ET107MF	21371	10
—		
ET107 x 100	21372	10

ACCESSORIES
End stop, width .31" (8mm)
universal
35mm rail only
Mounting rail, DIN (2 meter length)
non-slotted symmetrical 35mm x 7.5mm
slotted symmetrical 35mm x 7.5mm
non-slotted symmetrical 35mm x 15mm
slotted symmetrical 35mm x 15mm

TYPE	CATALOG No.	Pcs/PKG
BTU	BT005	25
BT/3	BT003	25
PR/3/AC	PR003	1
PR/3/AS	PR005	1
PR/3/PP	PR007	1
PR/3/PA	PR006	1

TYPE	CATALOG No.	Pcs/PKG
BTU	BT005	25
BT/3	BT003	25
PR/3/AC	PR003	1
PR/3/AS	PR005	1
PR/3/PP	PR007	1
PR/3/PA	PR006	1

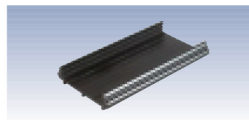
GENERAL DATA
Material: tray
Material: feet, end cover
Operating temperature
Flammability rating: tray
Flammability rating: feet, end cover

GENERAL DATA
PVC
Polyamide 6.6
0° C to 80° C
UL94 V1
UL94 V0

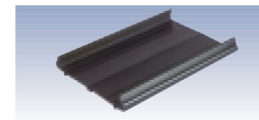
GENERAL DATA
PVC
Polyamide 6.6
0° C to 80° C
UL94 V1
UL94 V0

* Note: To order pre-cut tray or pre-assembled tray kit, add board length to be placed in tray on end of number in inches. Show length in four-digit format.

Example: board length = 2.53"
pre-assembled kit = ET72K-02.53



ET 72-xx.xx



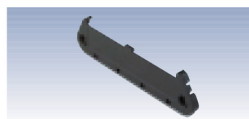
ET 107-xx.xx



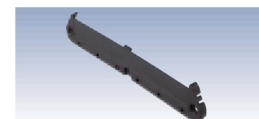
ET 72-MF



ET 107-MF



ET 72-EC



ET 107-EC