

Rotary Disconnect Switch, SQN Series, Type R, Door or Thru Panel Mounting

REGOLUS SWITCH DISCONNECTORS

The Giovenzana Disconnectors Regolus Series, built to the most stringent European and international standards (IEC / EN 60947-3, UL508), meets all the safety requirements.



SQN SERIES

The disconnectors modular SQN Series from 125A to 160A, 3 poles have the possibility to install additional poles, auxiliary contacts and terminal IP20 protections.

GENERAL CHARACTERISTICS

- Rated current from 125A to 160A
- 3 Poles (AC/DC)
- Additional pole (4th pole) and auxiliary contact
- Mechanism with two stable positions ON-OFF
- Locking handle (OFF position)
- Independent manual operation (according to EN 60947-3)
- Nr. 6 air-openings available to optimize heat dissipation
- Optimized for DIN rail (box) and panel mounting

AVAILABLE VERSIONS

- Switch disconnectors 6 poles and changeover
- Panel mounting Screw Fixing
- Base Mounting
- Door locking
- Direct command

COMPLY WITH RULES

IEC/EN 60947-3, UL508.

SERIES			SQN125 - SQN160	
Material Group		EN 60947-1	II	
Pollution Grade		EN 60947-1	3	
Flammability		UL94	VO (Live Electric parts)	
Ambient Temperature		°C	Operating: -25 +55	
		°C	Storage: -30 +70	
Climate Withstand		IEC 68 part 2-3	Constant Hot Damp	
		IEC 68 part 2-30	Cyclical Hot Damp	
Connections	Terminal Block Caliber	EN60947-1	A11	
	Terminal Screw		M 8	
	Screwing Torque	EN60947-1	6 Nm	
		UL508	53 lb. in. (6 Nm)	
Connectable Section	Flexible Conductors n°1 min/max	mm ²	6 - 25	
		AWG	10 - 2	
	Solid Conductors n°1 min/max	mm ²	10 - 35	
		AWG	10 - 2	
Contacts			Slow Opening Double-Break	
Opening Angles			90°	
Mechanical Lifetime				
at 120 operations per hour		nr. of cycles	100.000	
Maximum Altitude	Until 2000 mt	Derating	Standard	
	Over 2000 mt	Voltage Derating (V)	< 1% each 100 mt	
		Power Derating (A)	< 1% each 1000 mt	
CERTIFICATIONS			SQN125	SQN160
CE	CE mark - Europa		■	■
cUL US	cUL Listed - USA and Canada		●	●

Rotary Disconnect Switch, SQN Series, Type R, Door or Thru Panel Mounting

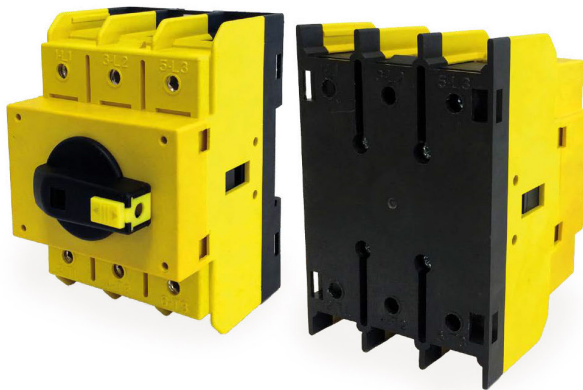
EN 60947-3 CHARACTERISTICS			SQN125	SQN160
Rated operating voltage Ue	V		690	690
Rated insulation voltage Ui	V		800	800
Rated impulse withstand voltage Uimp (sectionable)	kV		8	8
Rated thermal current Ith	A		125	160
Rated thermal current in enclosed Ithe	A		125	160
Frequency	Hz		50/60	50/60

RATED OPERATING CURRENT Ie: alternate current			SQN125	SQN160
AC-21A Switching resistive loads with light overloads	690V	A	125	160
AC-22A Switching mixed resistive and inductive loads at light overloads	500V	A	125	160
	690V	A	125	160
AC-23A Periodic switching of motors 3 phases - 3 poles	230V	A	-	-
	400V	A	125	160
	500V	A	100	125
	690V	A	80	100
DC-21B (4P Series positive opening)	600V	A	10	10

SHORT CIRCUIT CHARACTERISTICS			SQN125	SQN160
Rated short-time short circuit withstand current Icw (1 s)	A		3000	3000
Rated short circuit making capacity Icm	A		4500	4500
Conditional rated short circuit withstand current	kA		10 10	10 10
Fuse rating gG	500V	A	-	-
	690V	A	125	125

UL 508 CHARACTERISTICS			SQN125	SQN160
General Use	600V AC	A	125	150
Standard motor load	240V AC	HP	25	25
3 phases - 3 poles	480V AC	HP	50	50
	600V AC	HP	60	60

Box Execution

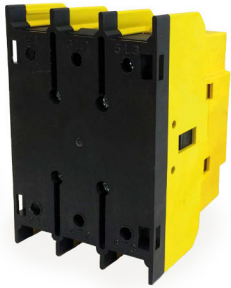


Panel Mounting Execution



Rotary Disconnect Switch, SQN Series, Type R, Door or Thru Panel Mounting

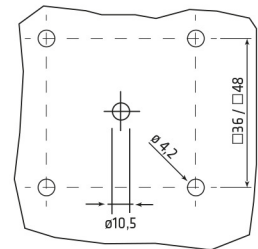
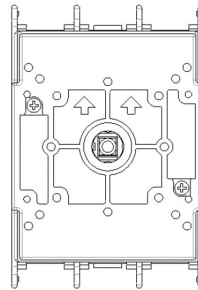
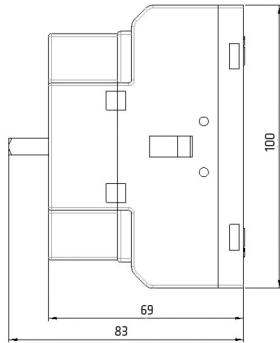
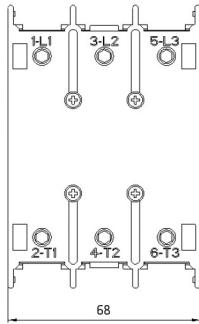
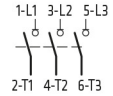
TYPE R



- Screw fixing.
- See page 51 for combinable actuators.

SERIES	AC-21A	AC-23A	CODE
	AMP. 690V	AMP. 400V	3 POLES
SQN125	125	125	SQN125003R
SQN160	160	160	SQN160003R

3 POLES



ADDITIONAL POLES

PANEL MOUNTING



SERIES	DESCRIPTION	CODE	DIAGRAM
SQN125 SQN160	Additional Pole NO	SQN125AFPR SQN160AFPR	7 — 8
	4 th Pole (early make contact)	SQN125ANIR SQN160ANIR	N — N
	Neutral Terminal	SQN125ANPR SQN160ANPR	N — N
	Ground Terminal	SQN125APER SQN160APER	PE — PE

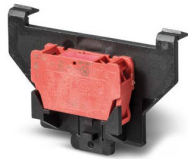
BASE MOUNTING



SERIES	DESCRIPTION	CODE	DIAGRAM
SQN125 SQN160	Additional Pole NO	SQN125AFPB SQN160AFPB	7 — 8
	4 th Pole (early make contact)	SQN125ANIB SQN160ANIB	N — N
	Neutral Terminal	SQN125ANPB SQN160ANPB	N — N
	Ground Terminal	SQN125APEB SQN160APEB	PE — PE

AUXILIARY CONTACTS

PANEL MOUNTING



SERIES	DESCRIPTION	CODE	DIAGRAM
SQN125 SQN160	AUX 1NC	SQ010A55R	1 — 1NC — 2
	AUX 1NO	SQ010A56R	3 — 1NO — 4

BASE MOUNTING



SERIES	DESCRIPTION	CODE	DIAGRAM
SQN125 SQN160	AUX 1NC	SQ010A55B	1 — 1NC — 2
	AUX 1NO	SQ010A56B	3 — 1NO — 4

TERMINAL PROTECTION AND SHAFT EXTENSION

PANEL & BASE MOUNTING



3 POLES	1 POLE
20900064	20900065

BASE MOUNTING



SHAFT EXTENSION □ 6 FOR DOOR INTERLOCK	
L 185 mm	20900010
L 300 mm	20900011