

## Rotary Disconnect Switch, SQN Series, 6 and 3 Pole Changeover, Type R, Door or Thru Panel Mounting

### REGOLUS SWITCH DISCONNECTORS

The Giovenzana Disconnectors Regolus Series, built to the most stringent European and international standards (IEC / EN 60947-3, UL508), meets all the safety requirements.



### SQN SERIES

The disconnectors modular SQN Series from 125A to 160A, 3 poles have the possibility to install additional poles, auxiliary contacts and terminal IP20 protections.

### GENERAL CHARACTERISTICS

- Rated current from 125A to 160A
- 3 Poles (AC/DC)
- Additional pole (4th pole) and auxiliary contact
- Mechanism with two stable positions ON-OFF
- Locking handle (OFF position)
- Independent manual operation (according to EN 60947-3)
- Nr. 6 air-openings available to optimize heat dissipation
- Optimized for DIN rail (box) and panel mounting

### AVAILABLE VERSIONS

- Switch disconnectors 6 poles and changeover
- Panel mounting Screw Fixing
- Base Mounting
- Door locking
- Direct command

### COMPLY WITH RULES

IEC/EN 60947-3, UL508.

SERIES		SQN125 - SQN160	
Material Group	EN 60947-1	II	
Pollution Grade	EN 60947-1	3	
Flammability	UL94	VO (Live Electric parts)	
Ambient Temperature	°C	Operating: -25 +55	
	°C	Storage: -30 +70	
Climate Withstand	IEC 68 part 2-3	Constant Hot Damp	
	IEC 68 part 2-30	Cyclical Hot Damp	
Connections	Terminal Block Caliber	EN60947-1	A11
	Terminal Screw		M 8
	Screwing Torque	EN60947-1	6 Nm
		UL508	53 lb. in. (6 Nm)
Connectable Section	Flexible Conductors n°1 min/max	mm <sup>2</sup>	6 - 25
		AWG	10 - 2
	Solid Conductors n°1 min/max	mm <sup>2</sup>	10 - 35
		AWG	10 - 2
Contacts		Slow Opening Double-Break	
Opening Angles		90°	
Mechanical Lifetime			
at 120 operations per hour	nr. of cycles	100.000	
Maximum Altitude	Until 2000 mt	Derating	Standard
	Over 2000 mt	Voltage Derating (V)	< 1% each 100 mt
		Power Derating (A)	< 1% each 1000 mt
CERTIFICATIONS		SQN125	SQN160
CE	CE mark - Europa	■	■
cUL US	cUL Listed - USA and Canada	●	●

## Rotary Disconnect Switch, SQN Series, 6 and 3 Pole Changeover, Type R, Door or Thru Panel Mounting

EN 60947-3 CHARACTERISTICS			SQN125	SQN160
Rated operating voltage Ue	V		690	690
Rated insulation voltage Ui	V		800	800
Rated impulse withstand voltage Uimp (sectionable)	kV		8	8
Rated thermal current Ith	A		125	160
Rated thermal current in enclosed Ithe	A		125	160
Frequency	Hz		50/60	50/60

RATED OPERATING CURRENT Ie: alternate current			SQN125	SQN160
<b>AC-21A</b> Switching resistive loads with light overloads	690V	A	125	160
<b>AC-22A</b> Switching mixed resistive and inductive loads at light overloads	500V	A	125	160
	690V	A	125	160
<b>AC-23A</b> Periodic switching of motors 3 phases - 3 poles	230V	A	-	-
	400V	A	125	160
	500V	A	100	125
	690V	A	80	100
<b>DC-21B</b> (4P Series positive opening)	600V	A	10	10

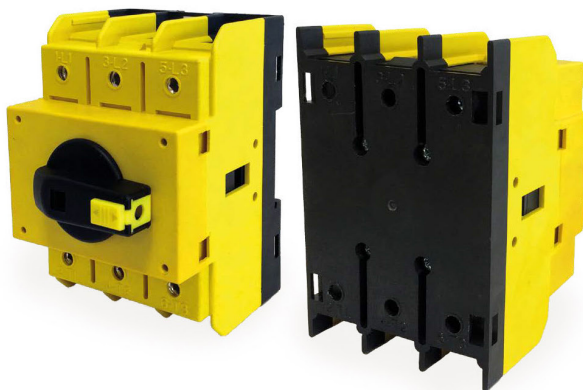
  

SHORT CIRCUIT CHARACTERISTICS			SQN125	SQN160
Rated short-time short circuit withstand current Icw (1 s)	A		3000	3000
Rated short circuit making capacity Icm	A		4500	4500
Conditional rated short circuit withstand current	kA		10   10	10   10
Fuse rating gG	500V	A	-	-
	690V	A	125	125

UL 508 CHARACTERISTICS			SQN125	SQN160
General Use	600V AC	A	125	150
Standard motor load	240V AC	HP	25	25
3 phases - 3 poles	480V AC	HP	50	50
	600V AC	HP	60	60

Box Execution



Panel Mounting Execution



## Rotary Disconnect Switch, SQN Series, 6 and 3 Pole Changeover, Type R, Door or Thru Panel Mounting

### TYPE R



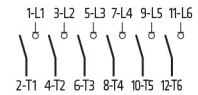
☛ Screw fixing.

SERIES	AC-21A	AC-23A	PANEL MOUNTING CODE	
	AMP. 690V	AMP. 400V	6 POLES	CHANGEOVER 3 POLES
SQN125	125	125	SQN125006R	SQN125033R
SQN160	160	160	SQN160006R	SQN160033R

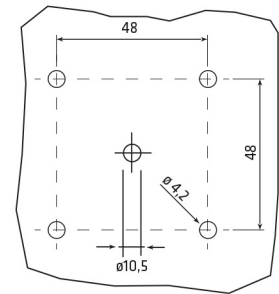
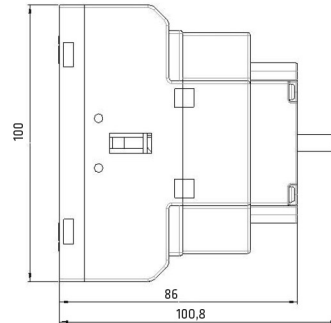
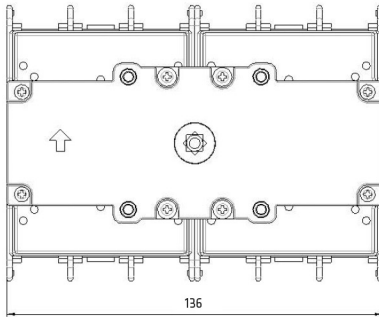
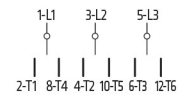
90°



6 POLES



3 POLES



### ADDITIONAL POLES

#### PANEL MOUNTING



SERIES	DESCRIPTION	CODE	DIAGRAM
SQN125 SQN160	Additional Pole NO	SQN125AFPR SQN160AFPR	7 — 8
	4 <sup>th</sup> Pole (early make contact)	SQN125ANIR SQN160ANIR	N — N
	Neutral Terminal	SQN125ANPR SQN160ANPR	N — N
	Ground Terminal	SQN125APER SQN160APER	PE — PE

#### BASE MOUNTING



SERIES	DESCRIPTION	CODE	DIAGRAM
SQN125 SQN160	Additional Pole NO	SQN125AFPB SQN160AFPB	7 — 8
	4 <sup>th</sup> Pole (early make contact)	SQN125ANIB SQN160ANIB	N — N
	Neutral Terminal	SQN125ANPB SQN160ANPB	N — N
	Ground Terminal	SQN125APEB SQN160APEB	PE — PE

### AUXILIARY CONTACTS

#### PANEL MOUNTING



SERIES	DESCRIPTION	CODE	DIAGRAM
SQN125 SQN160	AUX 1NC	SQ010A55R	1 — 1NC — 2
	AUX 1NO	SQ010A56R	3 — 1NO — 4

#### BASE MOUNTING



SERIES	DESCRIPTION	CODE	DIAGRAM
SQN125 SQN160	AUX 1NC	SQ010A55B	1 — 1NC — 2
	AUX 1NO	SQ010A56B	3 — 1NO — 4

### TERMINAL PROTECTION AND SHAFT EXTENSION

#### PANEL & BASE MOUNTING



3 POLES	1 POLE
20900064	20900065

#### BASE MOUNTING



SHAFT EXTENSION □ 6 FOR DOOR INTERLOCK	
L 185 mm	20900010
L 300 mm	20900011