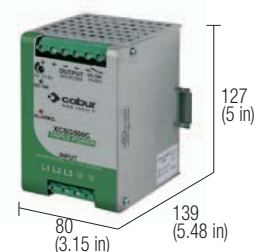


3-phase switching power supply 400-500 Vac output power 500 W

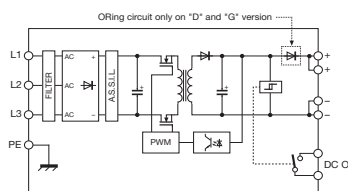
- 3-phase input 340...550 Vac or 2-phase with derating
- Short circuit, overload, over temperature, input and output overvoltage protections
- High outrush current to guarantee downstream overcurrent protections selectivity and to start-up heavy loads
- High efficiency and low dissipated power
- Suitable for applications in SELV and PELV circuits
- Input protected by ASSIL circuit (Surge Suppressor and Inrush Limiter)



NOTES

- The depth dimension includes the DIN rail clamp.
- (1) Version available upon request; for information call our sales department, local agent or representative
 - (3) Over 50°C (122°F) apply a derating of about 6 W/°C
 - (4) For this peak current, the output voltage does not drop more than 10% of the nominal value, but the current value, provided by the power supply also depends on the total line resistance.
 - (5) Version CSG500G is not suitable for SELV applications

BLOCK DIAGRAM



Special version for DC motors

Special version for DC motors

VERSIONS
Output 24 Vdc 20 A
Output 12...15 Vdc 40 A
Output 48 Vdc 10 A redundant version
Output 72 Vdc 6.7 A redundant version

INPUT TECHNICAL DATA	
Input rated voltage	3x 400-500 Vac (range 340...550 Vac)
Frequency	47...63 Hz
Current @ Iout max. (Uin 400 / 500 Vac)	1 A / 0.6 A
Inrush peak current	< 35 A
Power factor	> 0.75 with PFC
Internal protection fuse	—
External protection on AC line	circuit breaker: 10 A characteristic - fuse: 3x T 10 A

OUTPUT TECHNICAL DATA			
Output rated voltage	24...28 Vdc	48 Vdc	72 Vdc
Output adjustable range	24...28 Vdc	45...55 Vdc	72...85 Vdc
Continuous current	20 A @ 50°C (3)	10 A @ 50°C (3)	6.7 A @ 50°C (3)
Overload limit	>30 A for >5 s with Uout >90% Un (4)	>15 A for >5 s with Uout >90% Un (4)	10 A for >5 s with Uout >90% Un (4)
Short circuit peak current	>60 A for 5 s (4)	>30 A for 5 s (4)	>20 A for 5 s (4)
Load regulation	< 0.5%	< 0.5%	< 1%
Ripple @ nominal ratings	≤ 100 mVpp	≤ 100 mVpp	≤ 100 mVpp
Hold up time (Uin 400 / 500 Vac)	>15 ms / >30 ms	>15 ms / >20 ms	>15 ms / >20 ms
Overload / short circuit protections	hiccup at the overload limit with auto reset / over temperature protection / ASSIL circuit		
Status display	"DC OK" green LED / "DC OK" alarm contact/ "Overload" red LED		
Alarm contact threshold	<21.6 Vdc	<43.2 Vdc	<64.8 Vdc
Parallel connection	possible	possible	possible
Redundant parallel connection	possible with external ORing diode	factory provided with internal ORing diode	factory provided with internal ORing diode

GENERAL TECHNICAL DATA			
Efficiency (Uin 400 / 500 Vac)	>94% / >94%	>94% / >94%	>95% / >95%
Dissipated power (Uin 400 / 500 Vac)	30 W / 30 W	30 W / 30 W	26 W / 26 W
Operating temperature range	-20...+60°C, with derating over 50°C / over temperature protection (3)		
Input/output isolation	3 kVac / 60 s SELV output (5)		
Input/ground isolation	2 kVac / 60 s		
Output/ground isolation	0.5 kVac / 60 s		
Standard/approvals	EN50178, EN61558, EN60950, IEC950, UL508		
EMC Standards	EN61000-6-2, EN61000-6-4, EN61000-4-2, EN61000-4-3, EN61000-4-4, EN61000-4-5, EN61000-4-6, EN61000-4-11		
MTBF @ 25°C @ nominal ratings	>500'000 h acc. to SN 29500 / >150'000 h acc. to MIL Std. HDBK 217F		
Overvoltage category/Pollution degree	II / 2		
Protection degree	IP 20 IEC 529, EN60529		
Connection terminal	6 mm² fixed screw type		
Housing material	aluminium		
Approx. weight	1.3 kg (45.89 oz)		
Mounting information	vertical on rail, allow 10 mm spacing between adjacent components		

MOUNTING ACCESSORIES	
Mounting rail type according to IEC60715/TH35-7.5	PR/3/AC, PR/3/AC/ZB, PR/3/AS, PR/3/AS/ZB
Mounting rail type according to IEC60715/G32	—

Cod. XCSG500C	Cod. XCSG500D	Cod. XCSG500G
CSG500C	—	—
—	CSG500D (1)	—
—	—	CSG500G (1) (5)

INPUT TECHNICAL DATA	
Input rated voltage	3x 400-500 Vac (range 340...550 Vac)
Frequency	47...63 Hz
Current @ Iout max. (Uin 400 / 500 Vac)	1 A / 0.6 A
Inrush peak current	< 35 A
Power factor	> 0.75 with PFC
Internal protection fuse	—
External protection on AC line	circuit breaker: 10 A characteristic - fuse: 3x T 10 A

OUTPUT TECHNICAL DATA			
Output rated voltage	24...28 Vdc	48 Vdc	72 Vdc
Output adjustable range	24...28 Vdc	45...55 Vdc	72...85 Vdc
Continuous current	20 A @ 50°C (3)	10 A @ 50°C (3)	6.7 A @ 50°C (3)
Overload limit	>30 A for >5 s with Uout >90% Un (4)	>15 A for >5 s with Uout >90% Un (4)	10 A for >5 s with Uout >90% Un (4)
Short circuit peak current	>60 A for 5 s (4)	>30 A for 5 s (4)	>20 A for 5 s (4)
Load regulation	< 0.5%	< 0.5%	< 1%
Ripple @ nominal ratings	≤ 100 mVpp	≤ 100 mVpp	≤ 100 mVpp
Hold up time (Uin 400 / 500 Vac)	>15 ms / >30 ms	>15 ms / >20 ms	>15 ms / >20 ms
Overload / short circuit protections	hiccup at the overload limit with auto reset / over temperature protection / ASSIL circuit		
Status display	"DC OK" green LED / "DC OK" alarm contact/ "Overload" red LED		
Alarm contact threshold	<21.6 Vdc	<43.2 Vdc	<64.8 Vdc
Parallel connection	possible	possible	possible
Redundant parallel connection	possible with external ORing diode	factory provided with internal ORing diode	factory provided with internal ORing diode

GENERAL TECHNICAL DATA			
Efficiency (Uin 400 / 500 Vac)	>94% / >94%	>94% / >94%	>95% / >95%
Dissipated power (Uin 400 / 500 Vac)	30 W / 30 W	30 W / 30 W	26 W / 26 W
Operating temperature range	-20...+60°C, with derating over 50°C / over temperature protection (3)		
Input/output isolation	3 kVac / 60 s SELV output (5)		
Input/ground isolation	2 kVac / 60 s		
Output/ground isolation	0.5 kVac / 60 s		
Standard/approvals	EN50178, EN61558, EN60950, IEC950, UL508		
EMC Standards	EN61000-6-2, EN61000-6-4, EN61000-4-2, EN61000-4-3, EN61000-4-4, EN61000-4-5, EN61000-4-6, EN61000-4-11		
MTBF @ 25°C @ nominal ratings	>500'000 h acc. to SN 29500 / >150'000 h acc. to MIL Std. HDBK 217F		
Overvoltage category/Pollution degree	II / 2		
Protection degree	IP 20 IEC 529, EN60529		
Connection terminal	6 mm² fixed screw type		
Housing material	aluminium		
Approx. weight	1.3 kg (45.89 oz)		
Mounting information	vertical on rail, allow 10 mm spacing between adjacent components		

MOUNTING ACCESSORIES	
Mounting rail type according to IEC60715/TH35-7.5	PR/3/AC, PR/3/AC/ZB, PR/3/AS, PR/3/AS/ZB
Mounting rail type according to IEC60715/G32	—