

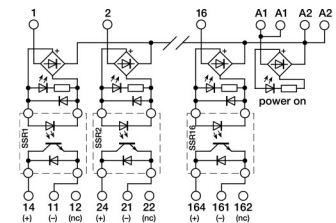
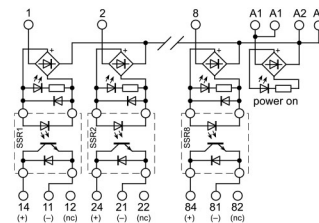
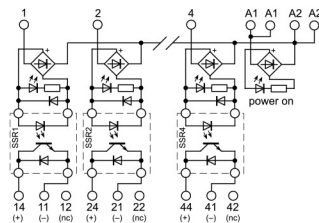
- Pluggable relay
- Allow PNP and NPN command
- Suitable for DC loads



**NOTE**

Manufacturer and model of the relay is not binding, technical data are to be considered typical

(1) Version produced upon request; contact our sales office for availability.



CODE	XR042S24	XR82S24	XR162S24
<b>TYPE</b>	R42S24 (1)	R82S24 (1)	R162S24 (1)
<b>INPUT TECHNICAL DATA</b>			
Input rated voltage	24 Vdc (range 19.5...28.5 Vdc)	24 Vdc (range 19.5...28.5 Vdc)	24 Vdc (range 19.5...28.5 Vdc)
Pull in drop out voltage type	19.2 V / 1 V	19.2 V / 1 V	19.2 V / 1 V
Current consumption	25 mA ±10% at 24 Vdc	25 mA ±10% at 24 Vdc	25 mA ±10% at 24 Vdc
Turn ON OFF time	1 ms / 1 ms	1 ms / 1 ms	1 ms / 1 ms
Frequency	100 Hz max	100 Hz max	100 Hz max
Protection circuit	—	—	—
Connection type	2.5 mm <sup>2</sup> screw type	2.5 mm <sup>2</sup> screw type	2.5 mm <sup>2</sup> screw type
Input channels	4 pluggable	8 pluggable	16 pluggable
<b>OUTPUT TECHNICAL DATA</b>			
Contact type	transistor	transistor	transistor
Output voltage	3...50 Vdc	3...50 Vdc	3...50 Vdc
Nominal current	2 A (24 Vdc) at 30°C	2 A (24 Vdc) at 30°C	2 A (24 Vdc) at 30°C
Max current	8 A for 10 ms	8 A for 10 ms	8 A for 10 ms
Leakage current with signal 0	0.1 mA	0.1 mA	0.1 mA
Min applicable load	10 mA	10 mA	10 mA
Max fuse current	—	—	—
Connection type	2.5 mm <sup>2</sup> [AWG26-14], screw type	2.5 mm <sup>2</sup> [AWG26-14], screw type	2.5 mm <sup>2</sup> [AWG26-14], screw type
Protection circuit device	—	—	—
<b>GENERAL TECHNICAL DATA</b>			
Operating temperature range	-20...+70°C (derating -0.75 W/°C over 30°C)	-20...+70°C (derating -0.75 W/°C over 30°C)	-20...+70°C (derating -0.75 W/°C over 30°C)
Input output isolation	2.5 kVac / 60 s	2.5 kVac / 60 s	2.5 kVac / 60 s
Protection degree	IP 00	IP 00	IP 00
Reference Standards	—	—	—
Overvoltage category pollution degree	II / 2	II / 2	II / 2
Status indication	LED "Input"	LED "Input"	LED "Input"
Housing material	UL94V-0 plastic material	UL94V-0 plastic material	UL94V-0 plastic material
Dimensions	70x93x75 mm	137x93x75 mm	250x93x75 mm
Approximate weight	207 g	379 g	756 g
Mounting information	vertical on a rail, side by side	vertical on a rail, side by side	vertical on a rail, side by side
<b>APPROVALS</b>	<b>CE</b>	<b>CE</b>	<b>CE</b>
<b>ACCESSORIES</b>			
Mounting rail IEC60715 TH35 75	PR/3/AC, PR/3/AC/ZB, PR/3/AS, PR/3/AS/ZB	PR/3/AC, PR/3/AC/ZB, PR/3/AS, PR/3/AS/ZB	PR/3/AC, PR/3/AC/ZB, PR/3/AS, PR/3/AS/ZB
Mounting rail IEC60715 TH35 15	PR/3/PP, PR/3/PP/ZB, PR/3/PA, PR/3/PA/ZB	PR/3/PP, PR/3/PP/ZB, PR/3/PA, PR/3/PA/ZB	PR/3/PP, PR/3/PP/ZB, PR/3/PA, PR/3/PA/ZB
Marking tag	—	—	—
Spare part relay	8904404	8904404	8904404